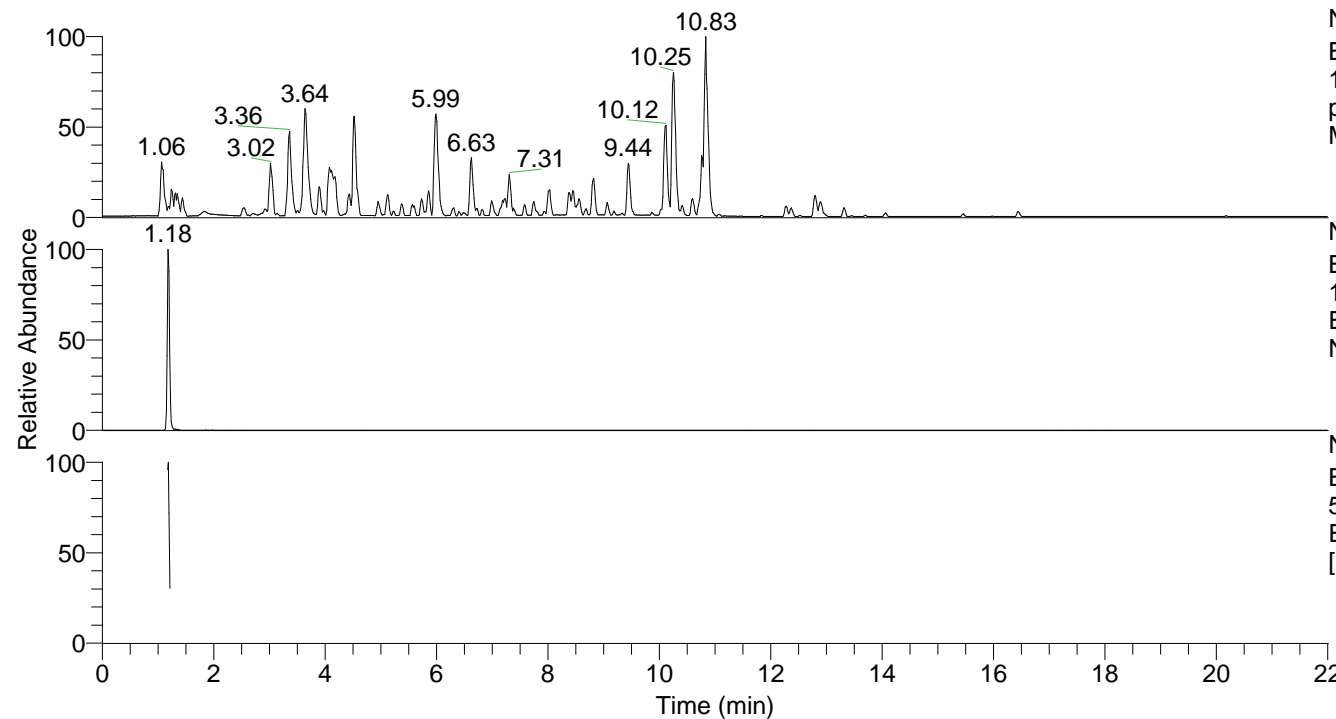


RT: 0.00 - 22.01



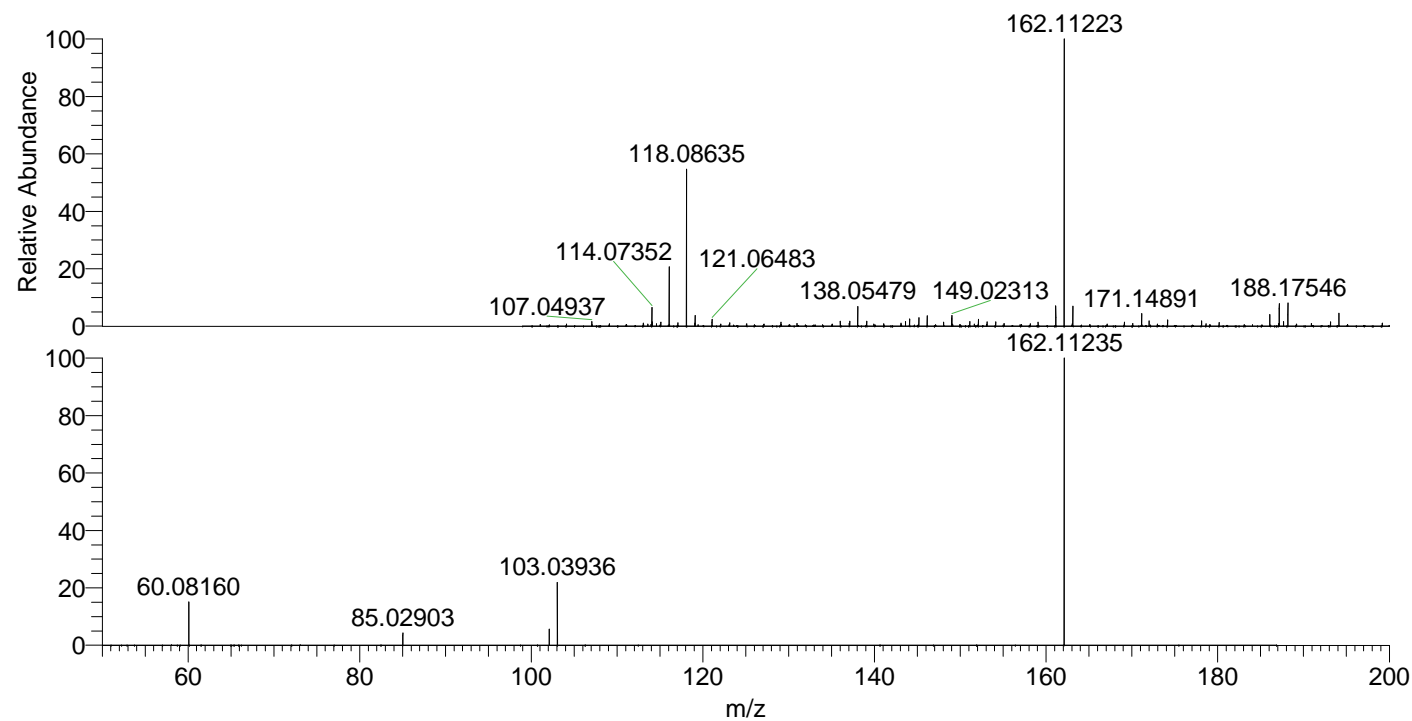
NL: 4.79E7
 Base Peak m/z=
 100.00000-1500.00000 F: FTMS +
 p ESI Full ms [100.00-1500.00]
 MS Nclavipes

NL: 2.87E6
 Base Peak m/z=
 162.11220-162.11382 F: FTMS + p
 ESI Full ms [100.00-1500.00] MS
 Nclavipes

NL: 1.32E6
 Base Peak m/z=
 50.00000-1500.00000 F: FTMS + p
 ESI d Full ms2 162.11@hcd35.00
 [50.00-185.00] MS Nclavipes

Nclavipes#468-476 RT: 1.18-1.20 AV: 3
 F: FTMS + p ESI d Full ms2 162.11@h ...
 m/z= 50.00000-1000.00000

m/z	Intensity	Relative
60.08160	161875.9	14.77
85.02903	45353.1	4.14
102.09182	59410.0	5.42
103.03936	238415.0	21.76
162.11235	1095850.4	100.00



NL: 2.81E6
 Nclavipes#469 RT: 1.18
 AV: 1 T: FTMS + p ESI
 Full lock ms
 [100.00-1500.00]

NL: 1.06E6
 Nclavipes#465-482 RT:
 1.18-1.20 AV: 3 F: FTMS
 + p ESI d Full ms2
 162.11@hcd35.00
 [50.00-185.00]