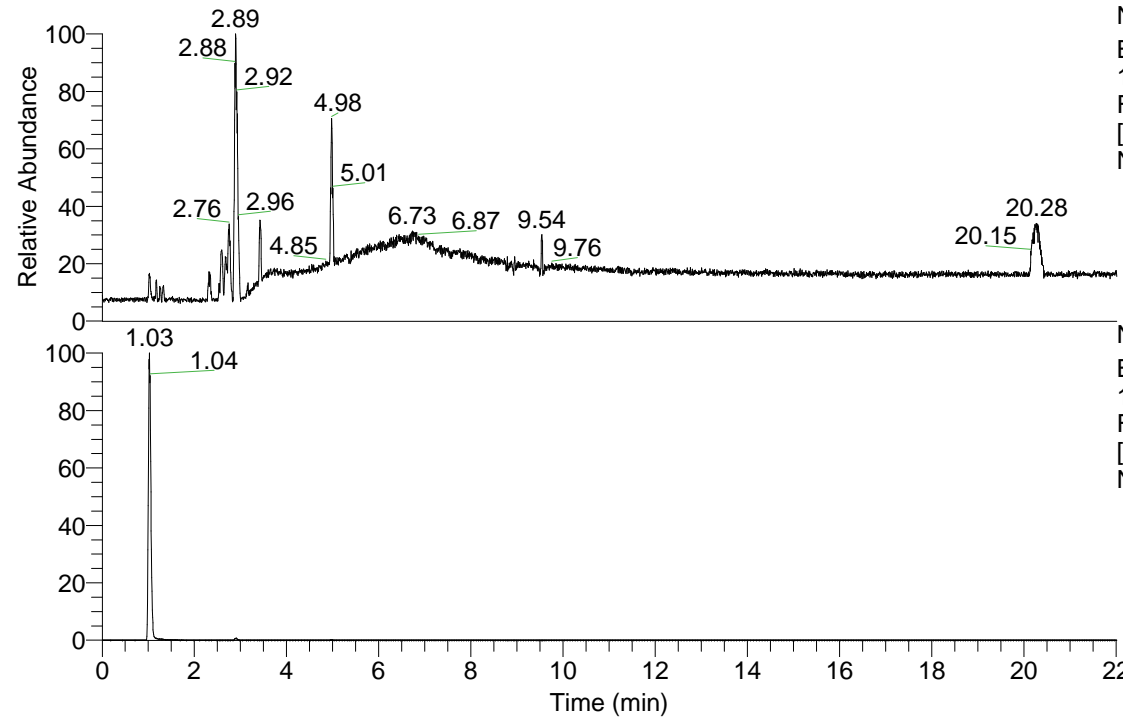


RT: 0.00 - 22.01

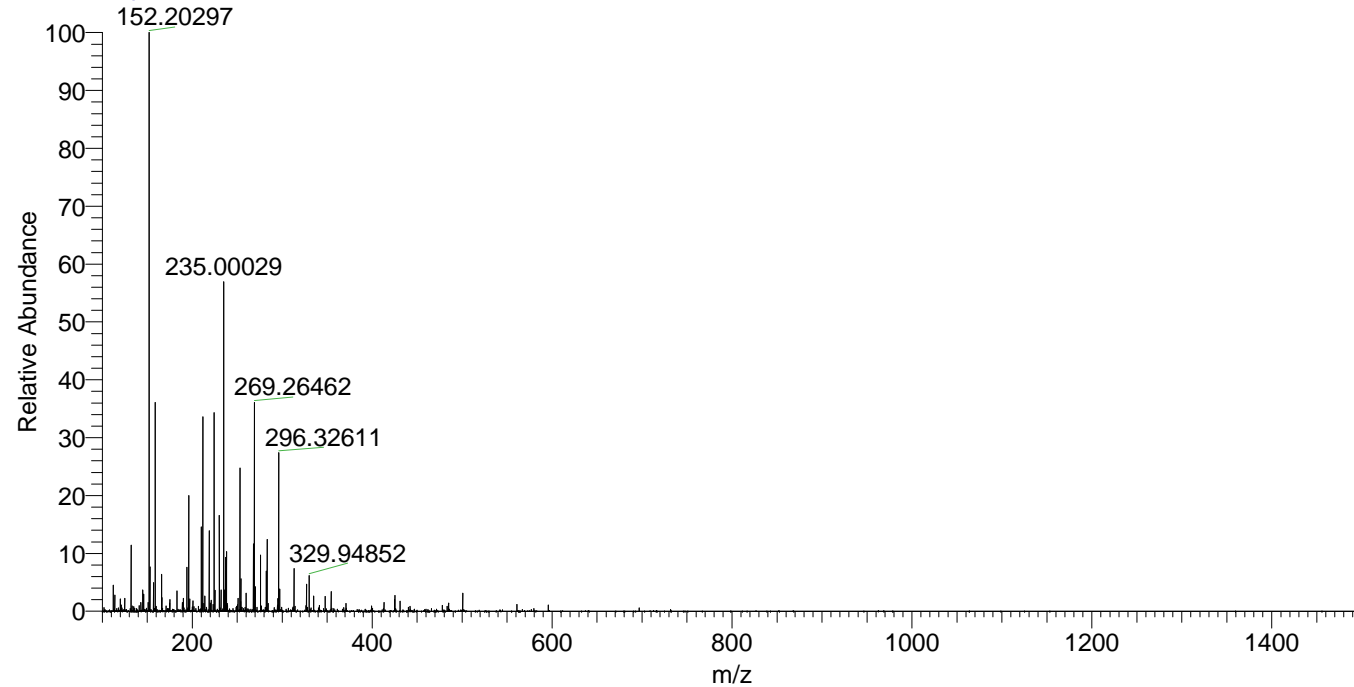


NL: 1.01E8  
Base Peak m/z=  
100.00000-1500.00000  
F: FTMS + p ESI Full ms  
[100.00-1500.00] MS  
Nclavipes\_HDX

Nclavipes\_HDX#154 RT: 1.03  
T: FTMS + p ESI Full ms [100.00-1500.00]  
m/z= 152.00000-153.00000

m/z	Intensity	Relative	Delta (ppm)	Composition
152.20297	15115510.0	100.00	0.90	C <sub>7</sub> H <sub>14</sub> <sup>2</sup> H <sub>6</sub> N <sub>3</sub>

Nclavipes\_HDX #154 RT: 1.03 AV: 1 NL: 1.51E7  
T: FTMS + p ESI Full ms [100.00-1500.00]



Nclavipes\_HDX #154 RT: 1.03 AV: 1 NL: 1.51E7  
T: FTMS + p ESI Full ms [100.00-1500.00]

