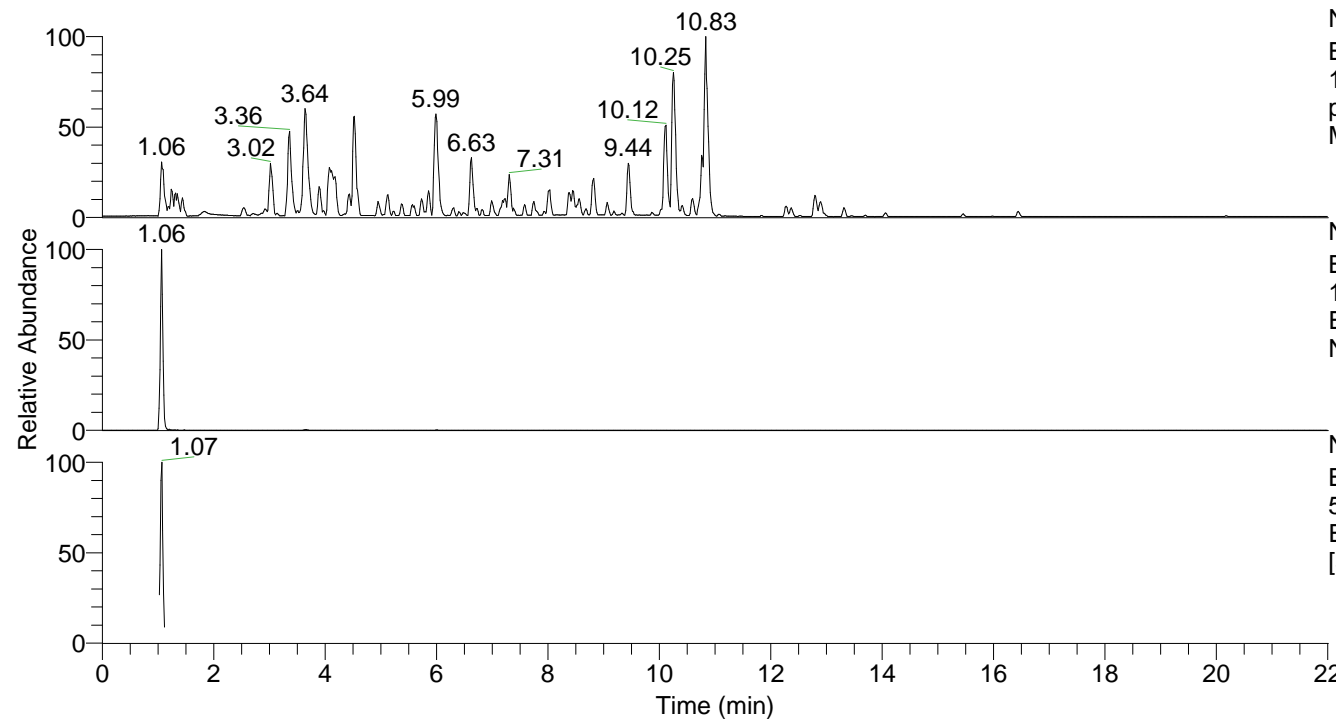


RT: 0.00 - 22.01



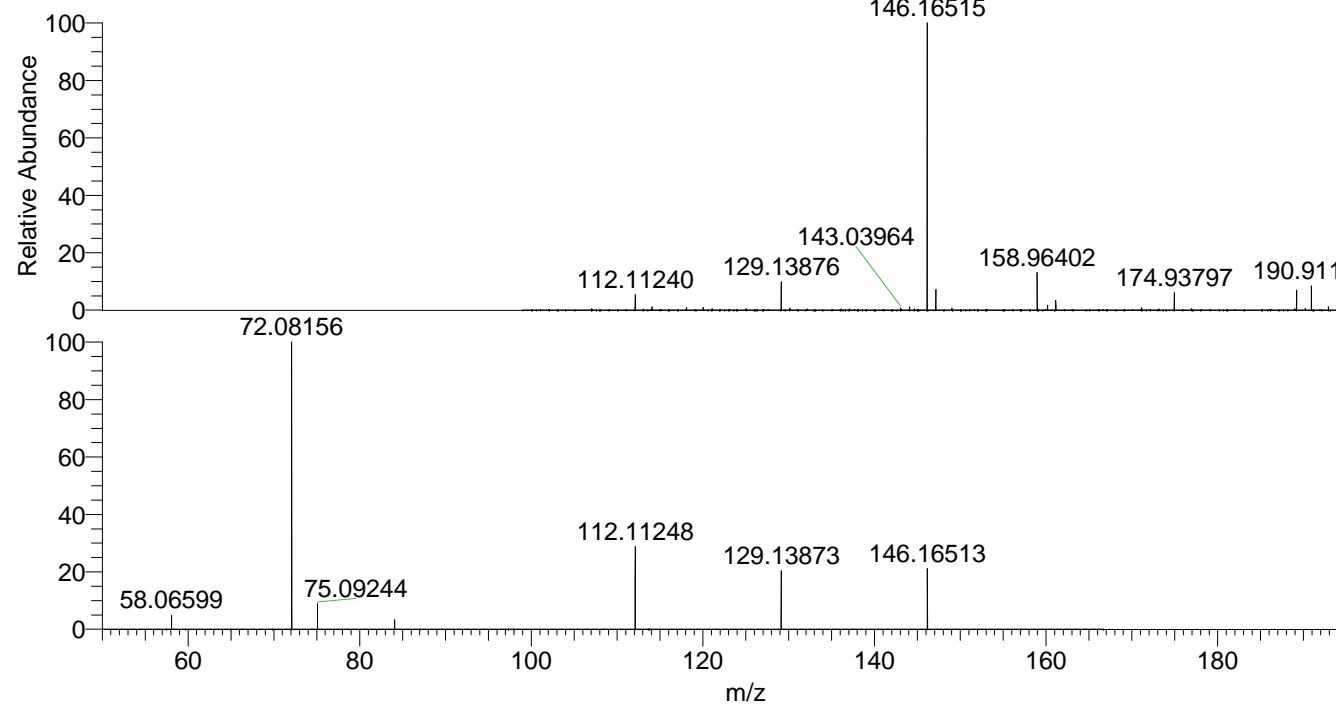
NL: 4.79E7
 Base Peak m/z=
 100.00000-1500.00000 F: FTMS +
 p ESI Full ms [100.00-1500.00]
 MS Nclavipes

NL: 1.47E7
 Base Peak m/z=
 146.16499-146.16645 F: FTMS + p
 ESI Full ms [100.00-1500.00] MS
 Nclavipes

NL: 7.73E6
 Base Peak m/z=
 50.00000-1500.00000 F: FTMS + p
 ESI d Full ms2 146.17@hcd35.00
 [50.00-165.00] MS Nclavipes

Nclavipes#410-428 RT: 1.04-1.08 AV: 4
 F: FTMS + p ESI d Full ms2 146.17@h ...
 m/z= 50.00000-1000.00000

m/z	Intensity	Relative
58.06597	258525.2	4.69
72.08155	5513552.5	100.00
75.09241	473626.1	8.59
84.08137	171697.9	3.11
112.11248	1554068.9	28.19
129.13875	1064877.6	19.31
146.16512	1088811.1	19.75



NL: 1.47E7
 Nclavipes#421 RT: 1.06
 AV: 1 T: FTMS + p ESI
 Full lock ms
 [100.00-1500.00]

NL: 6.75E6
 Nclavipes#415-427 RT:
 1.05-1.07 AV: 2 F: FTMS
 + p ESI d Full ms2
 146.17@hcd35.00
 [50.00-165.00]