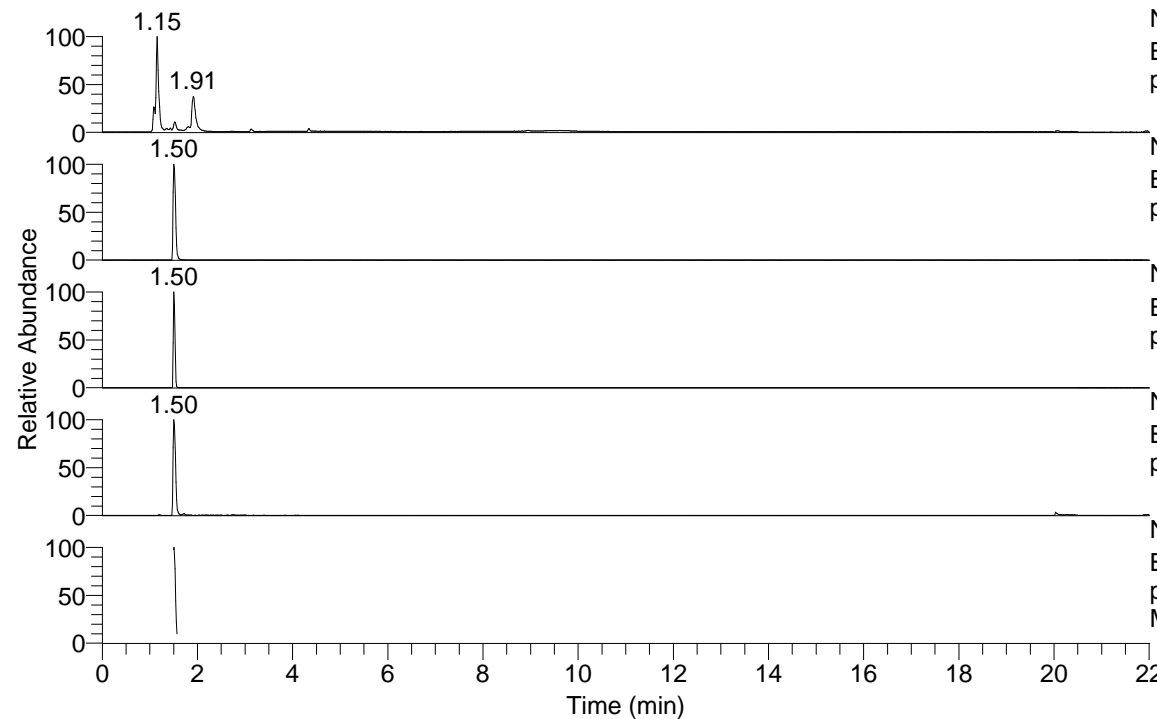


RT: 0.00 - 22.01



NL: 8.54E7
Base Peak m/z= 50.00000-1500.00000 F: FTMS +
p ESI Full ms [100.00-1500.00] MS LycGen5

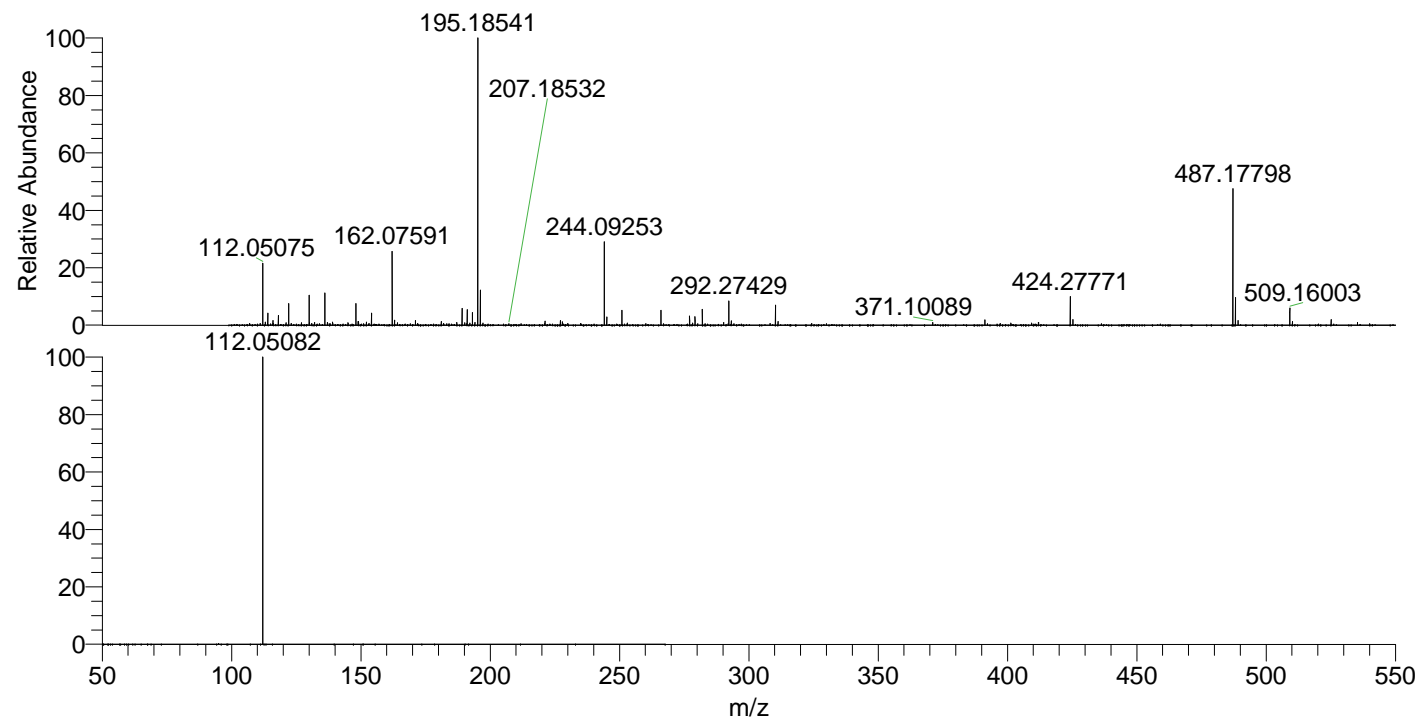
NL: 2.00E6
Base Peak m/z= 244.09213-244.09457 F: FTMS +
p ESI Full ms [100.00-1500.00] MS LycGen5

NL: 3.37E6
Base Peak m/z= 487.17643-487.18131 F: FTMS +
p ESI Full ms [100.00-1500.00] MS LycGen5

NL: 1.52E6
Base Peak m/z= 112.05053-112.05165 F: FTMS +
p ESI Full ms [100.00-1500.00] MS LycGen5

NL: 1.60E6
Base Peak m/z= 50.00000-1500.00000 F: FTMS +
p ESI d Full ms2 244.09@hcd35.00 [50.00-265.00]
MS LycGen5

LycGen5#599-627 RT: 1.50-1.57 AV: 6
F: FTMS + p ESI d Full ms2 244.09 ...
m/z= 50.00000-1000.00000
m/z Intensity Relative
112.05082 873072.3 100.00



NL: 6.77E6
LycGen5#601 RT: 1.50
AV: 1 T: FTMS + p ESI
Full lock ms
[100.00-1500.00]

NL: 8.60E5
LycGen5#562-661 RT:
1.50-1.57 AV: 6 F:
FTMS + p ESI d Full ms2
244.09@hcd35.00
[50.00-265.00]