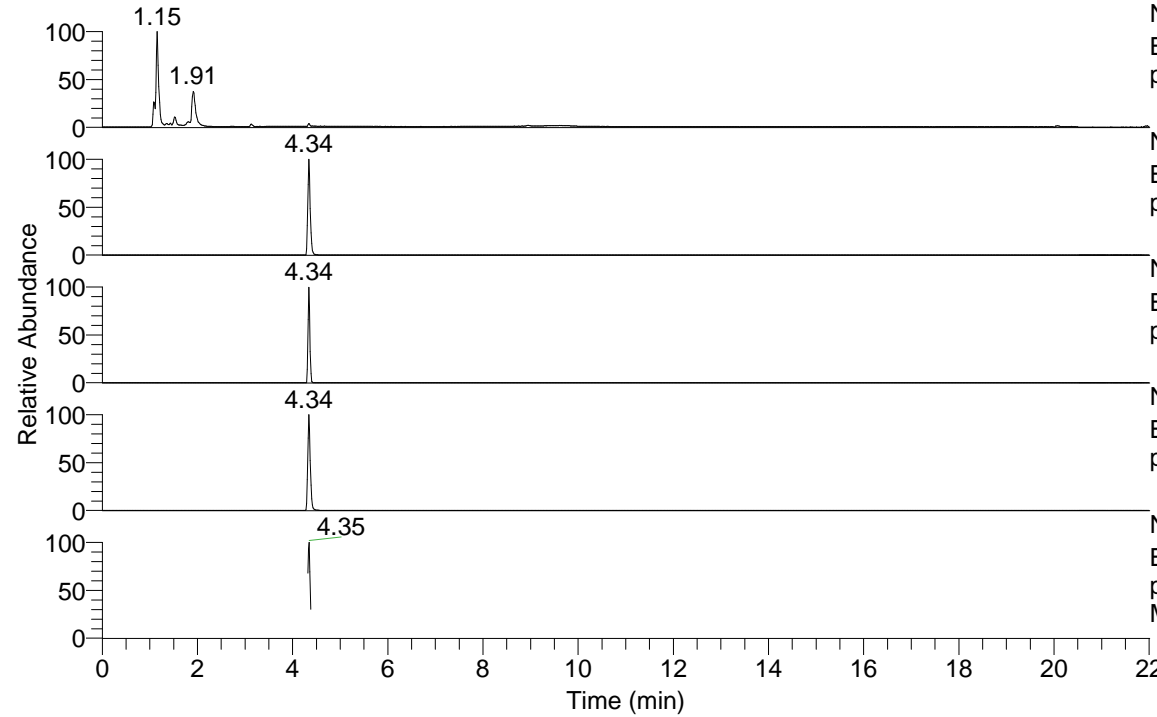


RT: 0.00 - 22.01



NL: 8.54E7  
Base Peak m/z= 50.00000-1500.00000 F: FTMS +  
p ESI Full ms [100.00-1500.00] MS LycGen5

NL: 9.38E5  
Base Peak m/z= 177.10102-177.10456 F: FTMS +  
p ESI Full ms [100.00-1500.00] MS LycGen5

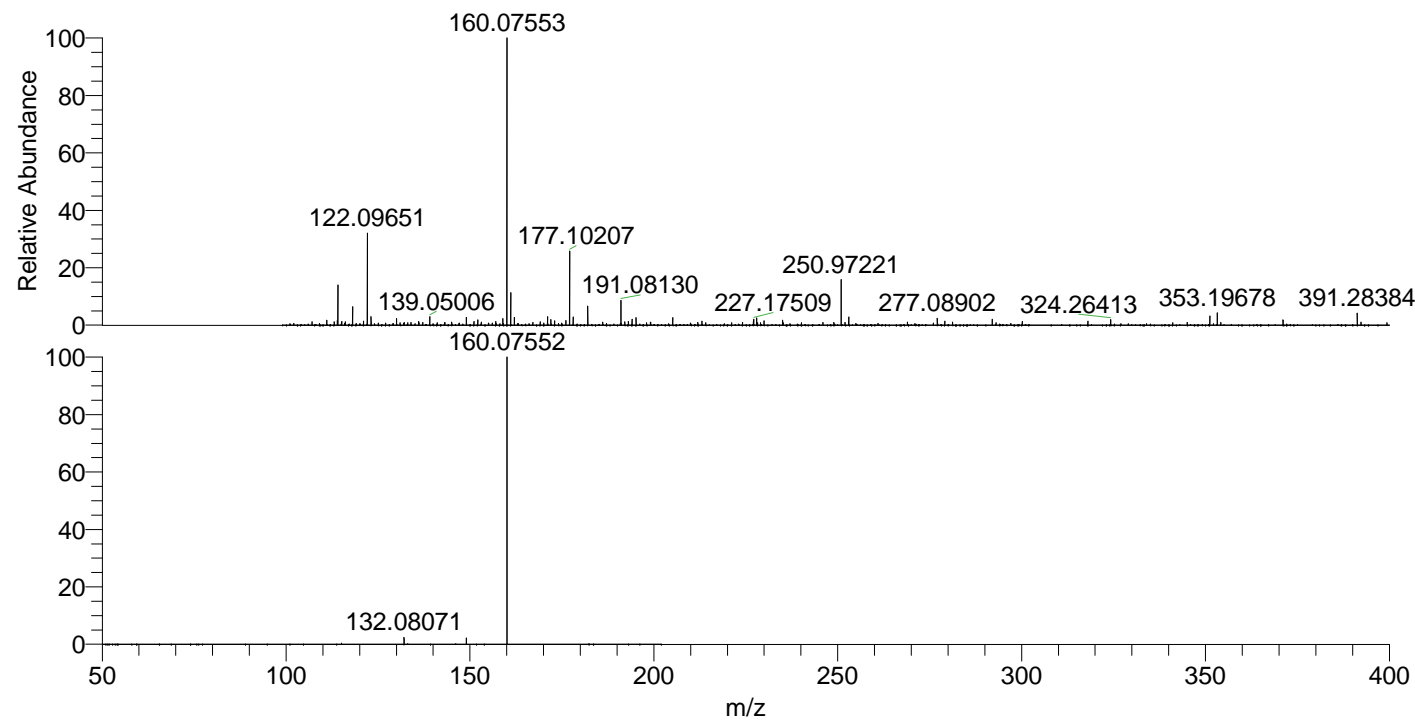
NL: 1.52E5  
Base Peak m/z= 353.19422-353.20128 F: FTMS +  
p ESI Full ms [100.00-1500.00] MS LycGen5

NL: 3.50E6  
Base Peak m/z= 160.07464-160.07784 F: FTMS +  
p ESI Full ms [100.00-1500.00] MS LycGen5

NL: 7.44E5  
Base Peak m/z= 50.00000-1500.00000 F: FTMS +  
p ESI d Full ms2 177.10@hcd35.00 [50.00-200.00]  
MS LycGen5

LycGen5#1722-1746 RT: 4.32-4.38 AV: 5  
F: FTMS + p ESI d Full ms2 177.10 ...  
m/z= 50.00000-1000.00000

m/z	Intensity	Relative
132.08071	12020.8	2.41
149.02327	10671.0	2.14
160.07552	498351.2	100.00



NL: 3.50E6  
LycGen5#1729 RT: 4.34  
AV: 1 T: FTMS + p ESI  
Full lock ms  
[100.00-1500.00]

NL: 4.80E5  
LycGen5#1650-1793 RT:  
4.32-4.38 AV: 5 F: FTMS  
+ p ESI d Full ms2  
177.10@hcd35.00  
[50.00-200.00]