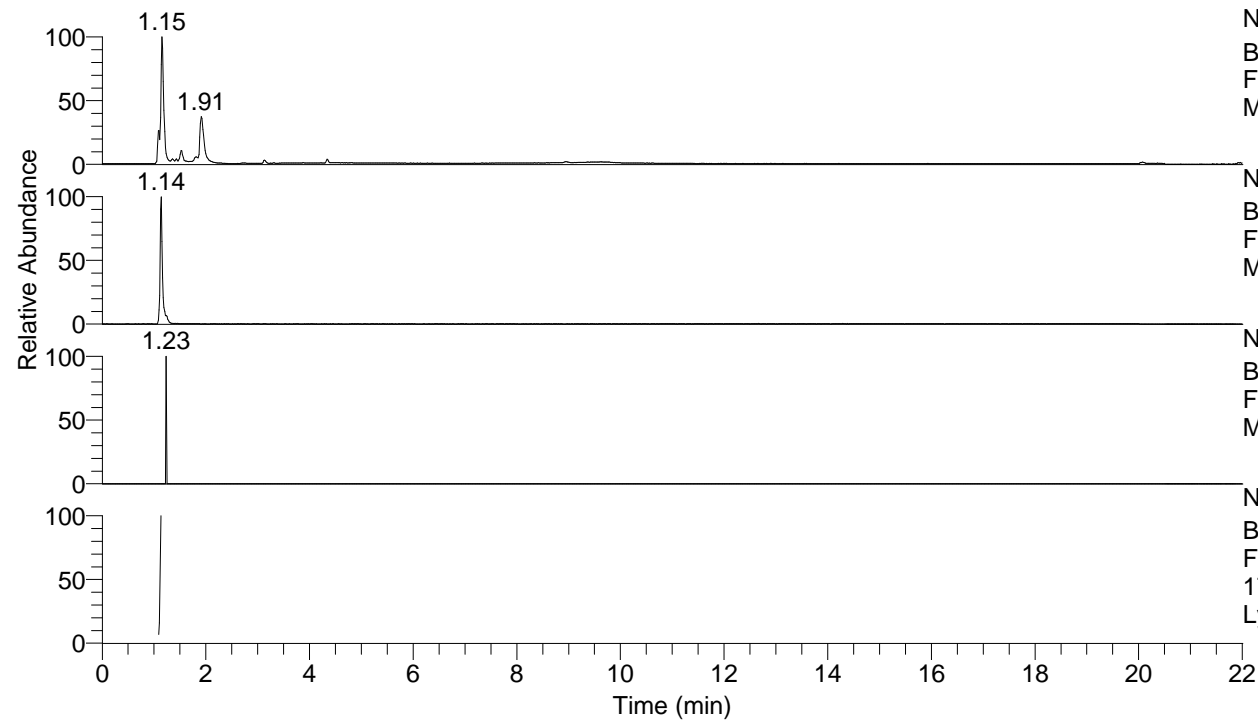


RT: 0.00 - 22.01



NL: 8.54E7
 Base Peak m/z= 50.00000-1500.00000 F:
 FTMS + p ESI Full ms [100.00-1500.00]
 MS LycGen5

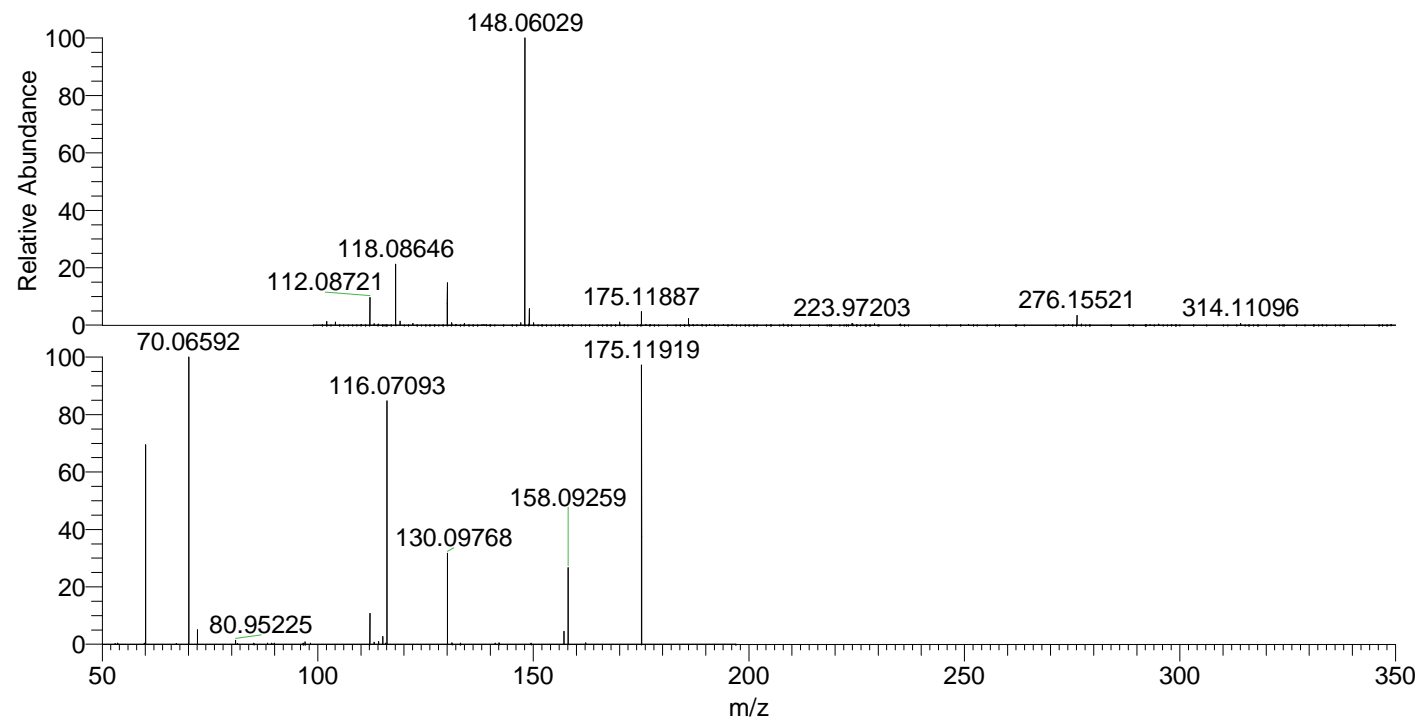
NL: 3.11E6
 Base Peak m/z= 175.11775-175.12125 F:
 FTMS + p ESI Full ms [100.00-1500.00]
 MS LycGen5

NL: 2.19E3
 Base Peak m/z= 349.22769-349.23467 F:
 FTMS + p ESI Full ms [100.00-1500.00]
 MS LycGen5

NL: 5.31E5
 Base Peak m/z= 50.00000-1500.00000 F:
 FTMS + p ESI d Full ms2
 174.94@hcd35.00 [50.00-195.00] MS
 LycGen5

LycGen5#430-450 RT: 1.09-1.14 AV: 3
 F: FTMS + p ESI d Full ms2 174.94 ...
 m/z= 50.00000-1000.00000

m/z	Intensity	Relative
60.05648	142412.0	70.76
70.06592	201261.6	100.00
70.07013	1566.1	0.78
72.08154	10213.9	5.07
80.95225	2793.7	1.39
97.07660	1637.3	0.81
112.08737	21400.6	10.63
113.07148	1496.5	0.74
114.10298	1882.6	0.94
115.08669	5501.1	2.73
116.07093	169332.8	84.14
130.09768	63313.4	31.46
142.07766	1057.1	0.53
157.10867	8988.2	4.47
158.09259	53340.1	26.50
175.11919	196066.7	97.42



NL: 6.59E7
 LycGen5#451 RT: 1.14
 AV: 1 T: FTMS + p ESI
 Full ms [100.00-1500.00]

NL: 2.00E5
 LycGen5#381-494 RT:
 1.09-1.14 AV: 3 F:
 FTMS + p ESI d Full ms2
 174.94@hcd35.00
 [50.00-195.00]