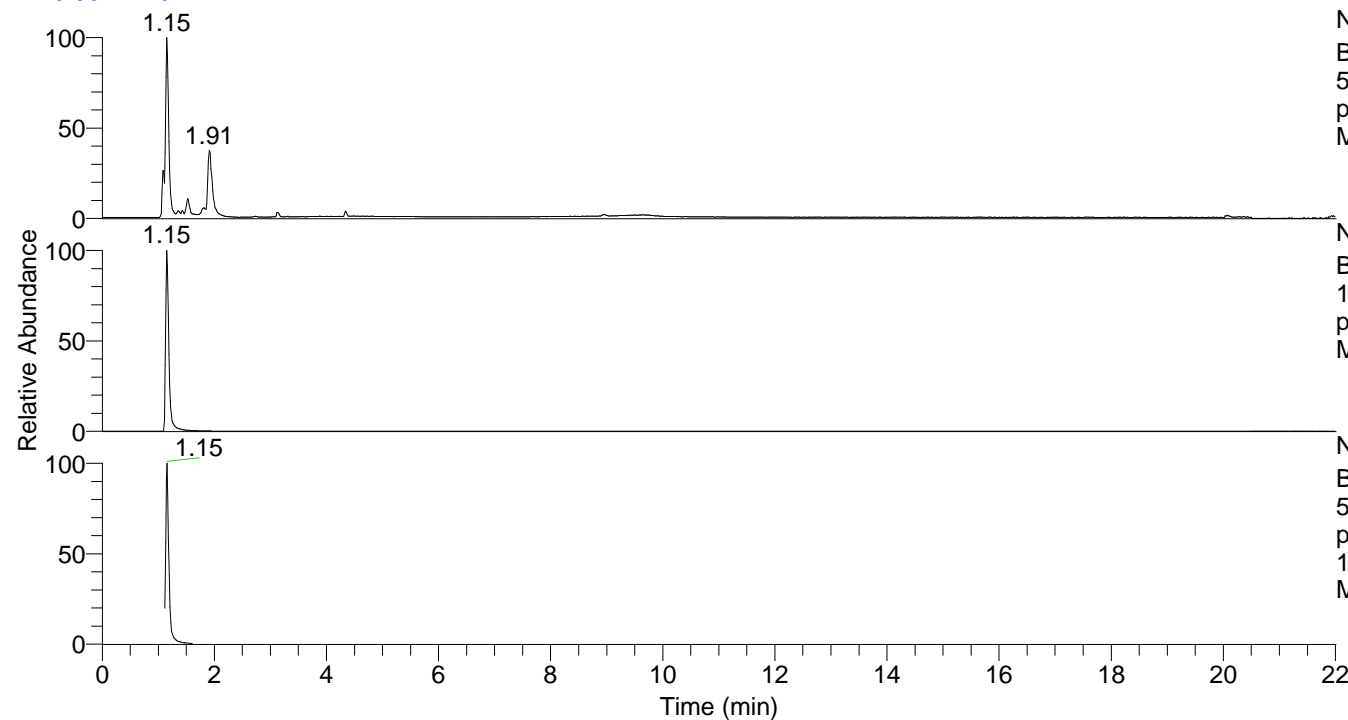


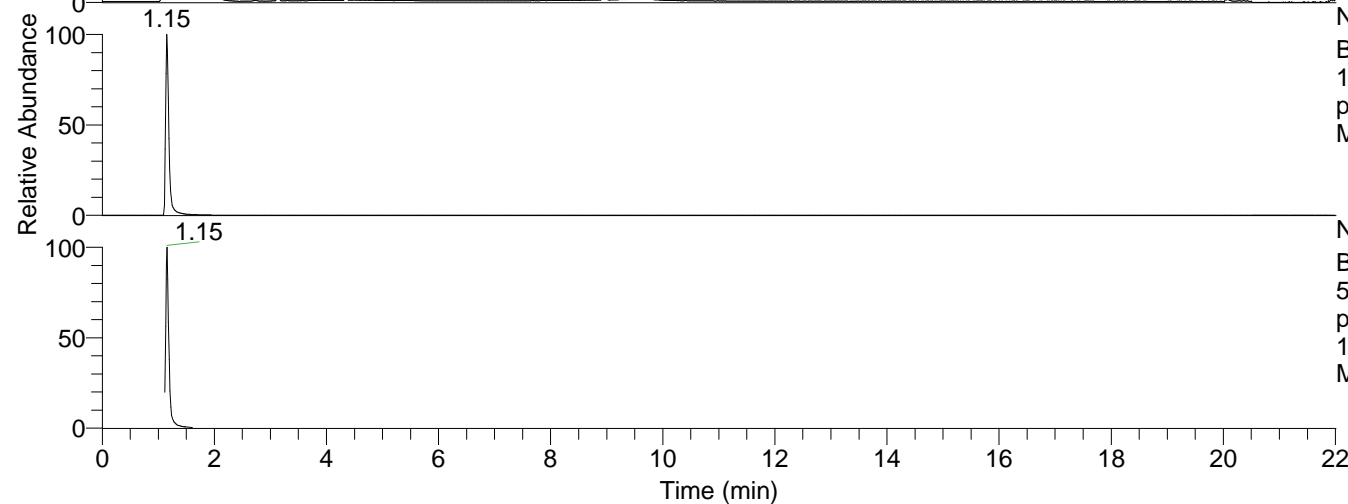
RT: 0.00 - 22.01



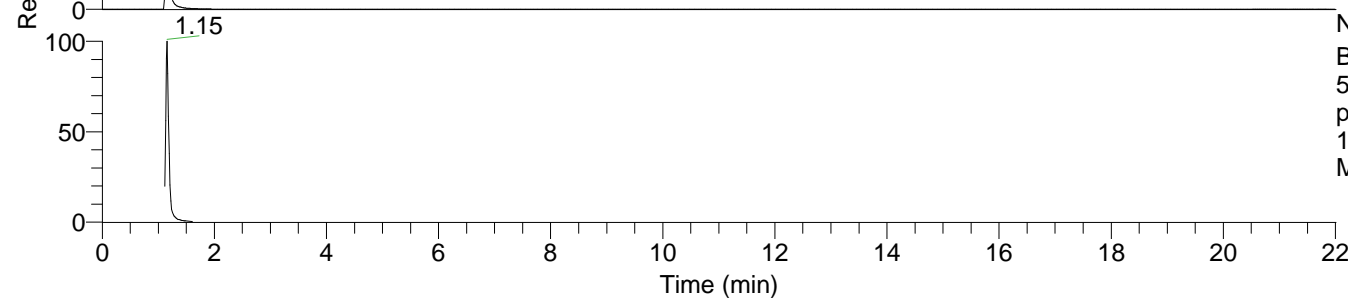
NL: 8.54E7
Base Peak m/z=
50.00000-1500.00000 F: FTMS +
p ESI Full ms [100.00-1500.00]
MS LycGen5

LycGen5#442-518 RT: 1.12-1.30 AV: 14
F: FTMS + p ESI d Full ms2 148.06@hc ...
m/z= 50.00000-1000.00000

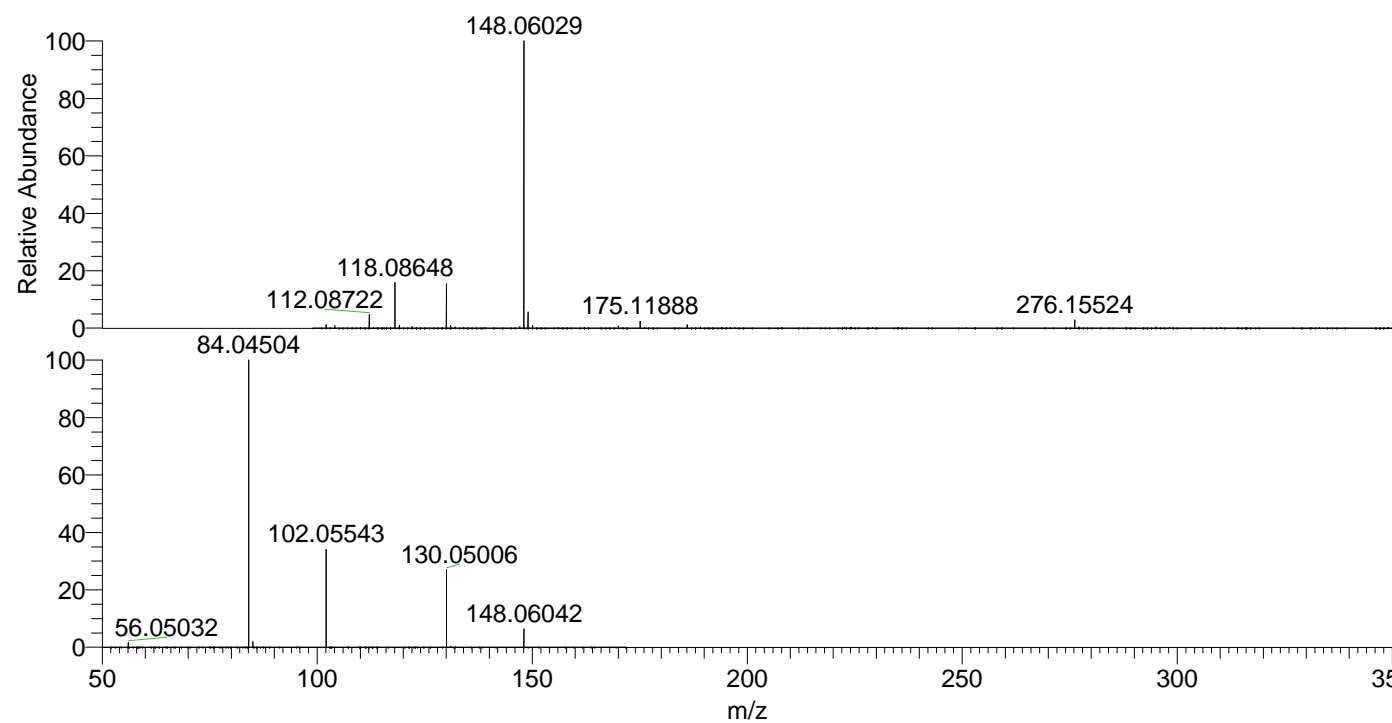
m/z	Intensity	Relative
56.05032	334749.6	1.57
84.04504	21255004.0	100.00
85.02899	413382.8	1.94
102.05543	7183515.5	33.80
130.05006	5713704.0	26.88
148.06042	1383080.8	6.51



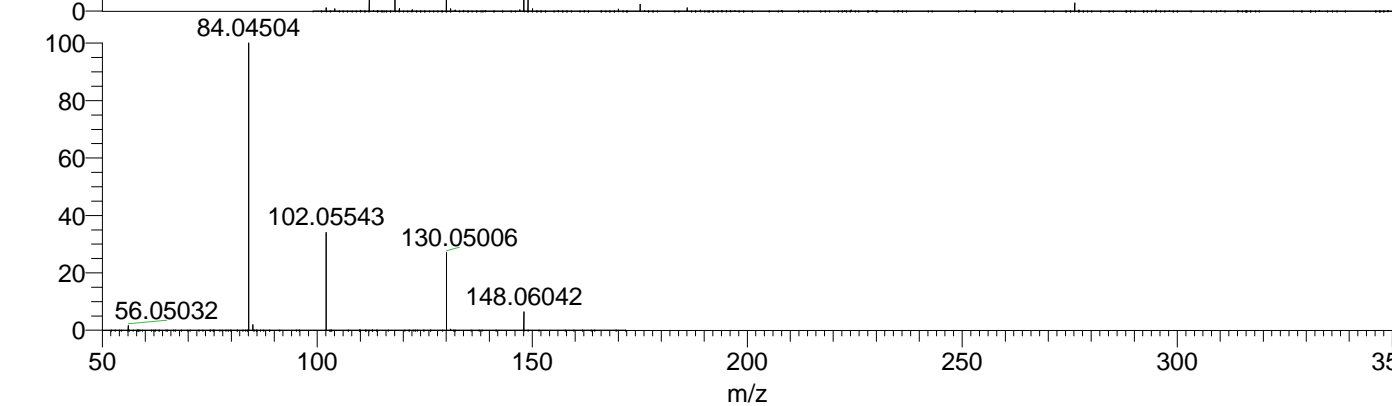
NL: 8.54E7
Base Peak m/z=
148.05950-148.06246 F: FTMS +
p ESI Full ms [100.00-1500.00]
MS LycGen5



NL: 6.07E7
Base Peak m/z=
50.00000-1500.00000 F: FTMS +
p ESI d Full ms2
148.06@hcd35.00 [50.00-170.00]
MS LycGen5



NL: 8.47E7
LycGen5#457 RT: 1.15
AV: 1 T: FTMS + p ESI
Full ms [100.00-1500.00]



NL: 2.11E7
LycGen5#392-521 RT:
1.12-1.30 AV: 14 F:
FTMS + p ESI d Full ms2
148.06@hcd35.00
[50.00-170.00]