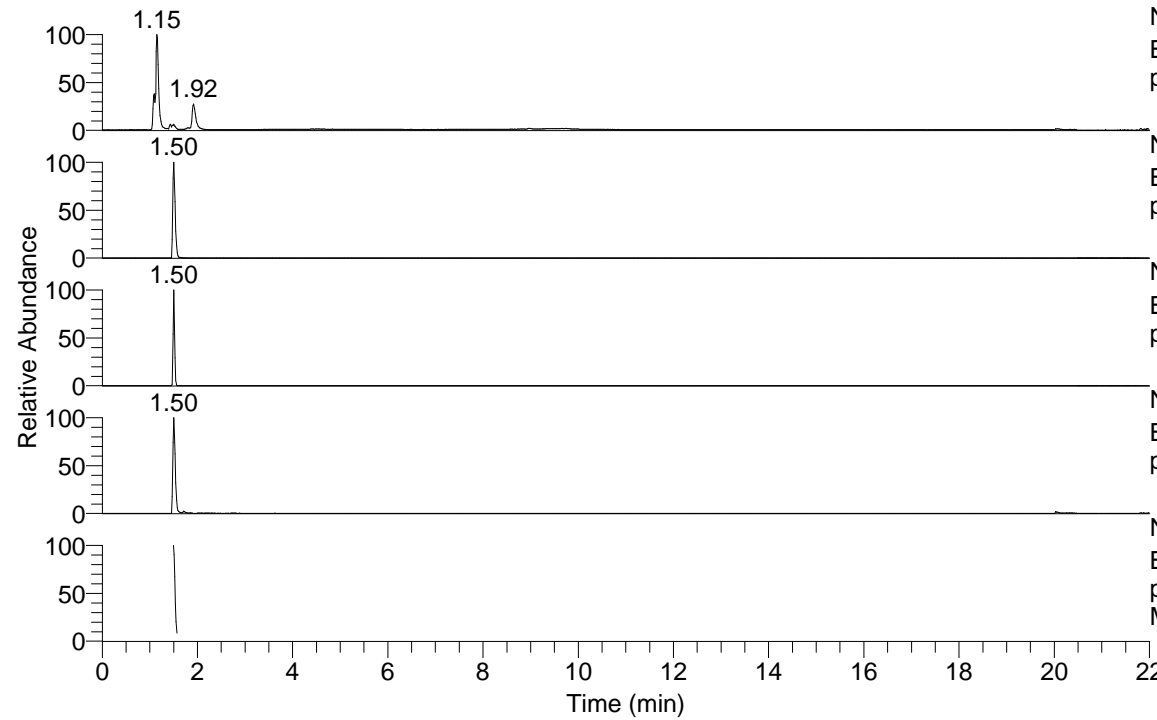


RT: 0.00 - 22.00



NL: 8.68E7
Base Peak m/z= 50.00000-1500.00000 F: FTMS +
p ESI Full ms [100.00-1500.00] MS LycGen3

NL: 2.93E6
Base Peak m/z= 244.09213-244.09457 F: FTMS +
p ESI Full ms [100.00-1500.00] MS LycGen3

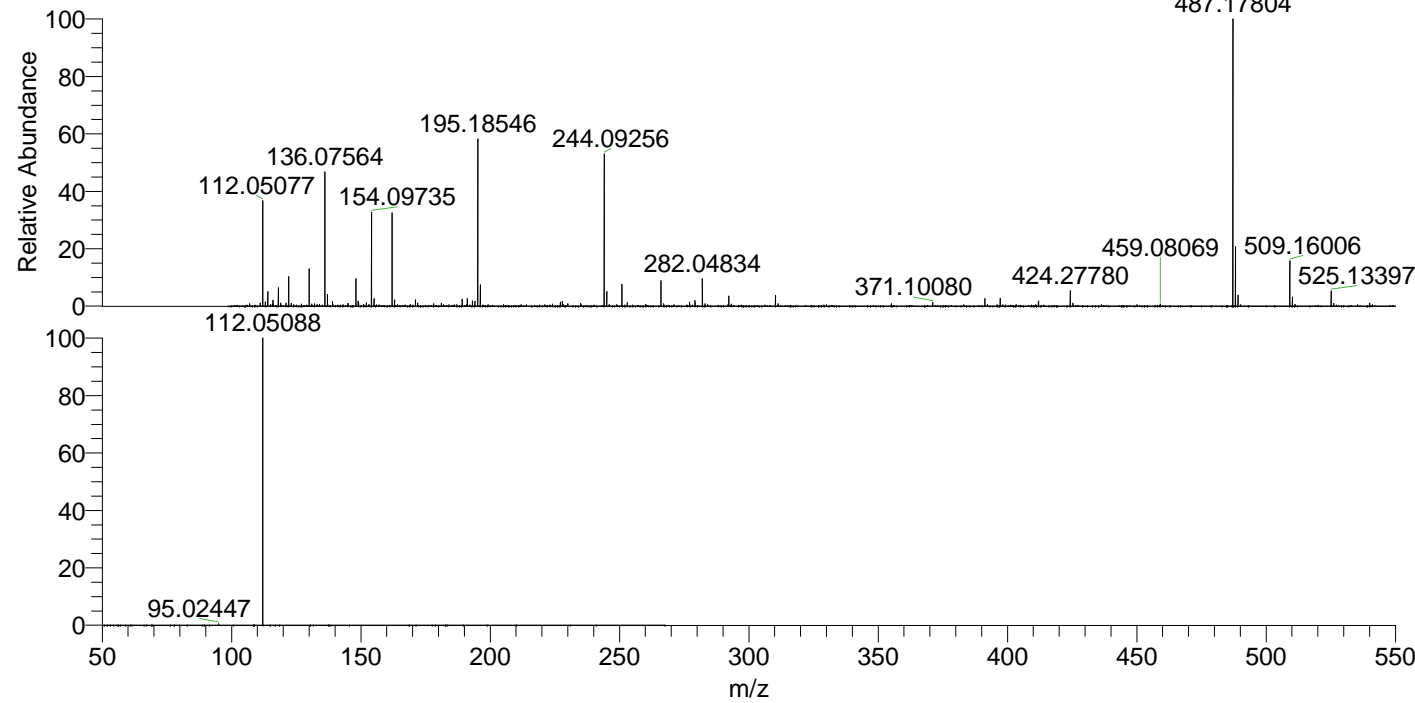
NL: 5.70E6
Base Peak m/z= 487.17643-487.18131 F: FTMS +
p ESI Full ms [100.00-1500.00] MS LycGen3

NL: 2.08E6
Base Peak m/z= 112.05053-112.05165 F: FTMS +
p ESI Full ms [100.00-1500.00] MS LycGen3

NL: 2.45E6
Base Peak m/z= 50.00000-1500.00000 F: FTMS +
p ESI d Full ms2 244.09@hcd35.00 [50.00-265.00]
MS LycGen3

LycGen3#599-627 RT: 1.50-1.57 AV: 6
F: FTMS + p ESI d Full ms2 244.09@h ...
m/z= 50.00000-1000.00000

m/z	Intensity	Relative
95.02447	6298.7	0.51
112.05088	1238812.1	100.00



NL: 5.38E6
LycGen3#601 RT: 1.50
AV: 1 T: FTMS + p ESI
Full lock ms
[100.00-1500.00]

NL: 1.23E6
LycGen3#564-662 RT:
1.50-1.57 AV: 6 F:
FTMS + p ESI d Full ms2
244.09@hcd35.00
[50.00-265.00]