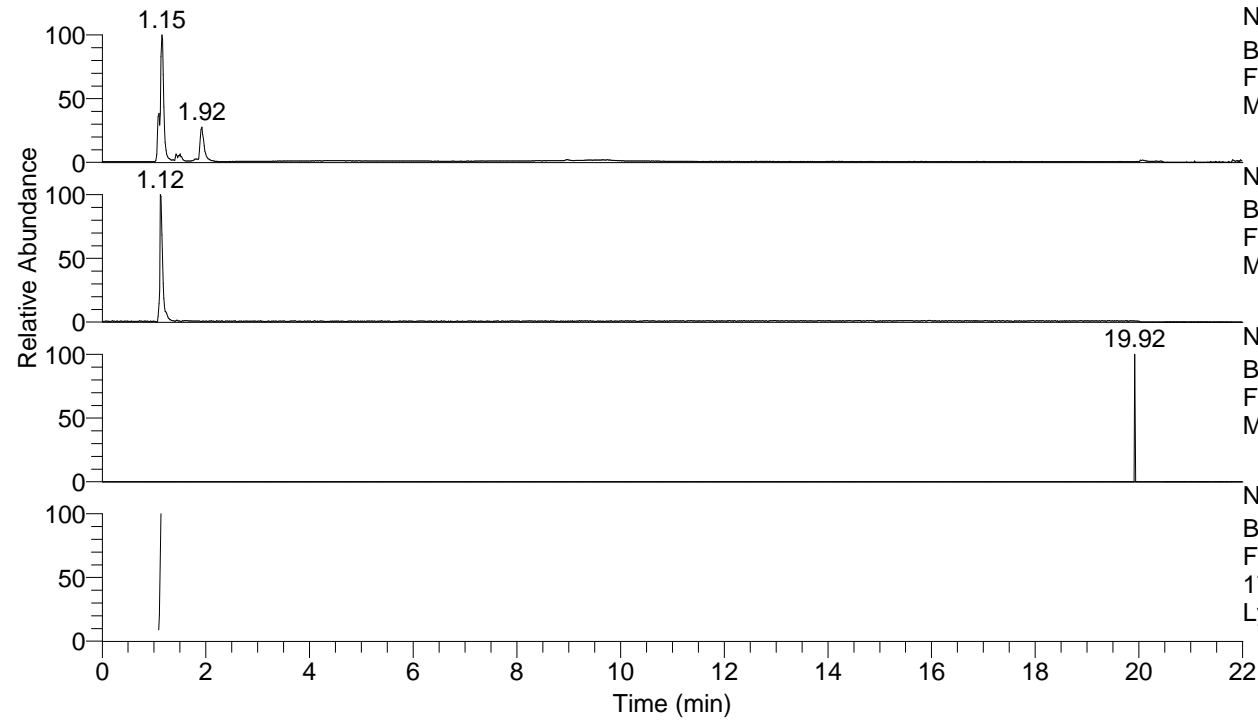


RT: 0.00 - 22.00



NL: 8.68E7
Base Peak m/z= 50.00000-1500.00000 F:
FTMS + p ESI Full ms [100.00-1500.00]
MS LycGen3

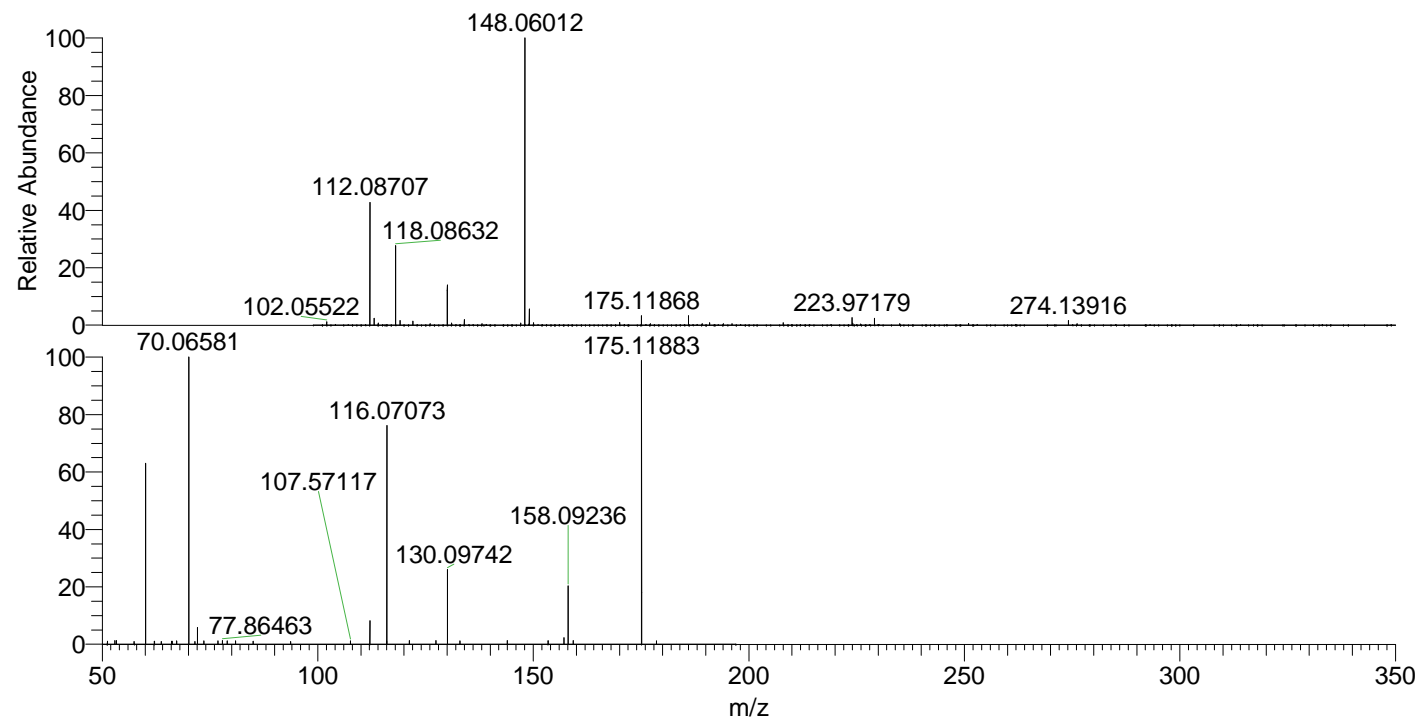
NL: 1.11E6
Base Peak m/z= 175.11775-175.12125 F:
FTMS + p ESI Full ms [100.00-1500.00]
MS LycGen3

NL: 1.21E3
Base Peak m/z= 349.22769-349.23467 F:
FTMS + p ESI Full ms [100.00-1500.00]
MS LycGen3

NL: 1.74E5
Base Peak m/z= 50.00000-1500.00000 F:
FTMS + p ESI d Full ms2
174.94@hcd35.00 [50.00-195.00] MS
LycGen3

LycGen3#430-450 RT: 1.09-1.13 AV: 3
F: FTMS + p ESI d Full ms2 174.94 ...
m/z= 50.00000-1000.00000

m/z	Intensity	Relative
51.18963	737.9	1.03
52.93583	889.1	1.24
53.30552	911.6	1.28
57.42433	653.3	0.91
60.04472	771.6	1.08
60.05356	1326.4	1.86
60.05640	46089.3	64.51
62.10390	728.5	1.02
63.68690	713.2	1.00
66.04814	734.3	1.03
66.25766	765.0	1.07
67.25908	884.7	1.24
70.06581	71449.9	100.00
71.48788	693.0	0.97
72.08139	4304.5	6.02
73.60906	817.7	1.14
76.83113	844.0	1.18
77.86463	878.4	1.23
78.97898	829.0	1.16
80.95191	851.8	1.19
85.04503	806.7	1.13
93.69580	699.5	0.98
107.57117	835.3	1.17
112.08711	5900.2	8.26
115.95207	855.7	1.20
116.07073	54988.3	76.96
121.23279	898.7	1.26
127.42489	939.2	1.31
130.09742	18696.7	26.17
132.97191	808.4	1.13
143.96753	897.4	1.26
153.43983	876.6	1.23
157.10828	1641.8	2.30
158.09236	14798.3	20.71
159.24942	916.2	1.28
175.11883	70580.6	98.78
178.57687	859.4	1.20



NL: 3.30E7
LycGen3#445 RT: 1.12
AV: 1 T: FTMS + p ESI
Full ms [100.00-1500.00]

NL: 7.14E4
LycGen3#392-475 RT:
1.09-1.13 AV: 3 F:
FTMS + p ESI d Full ms2
174.94@hcd35.00
[50.00-195.00]