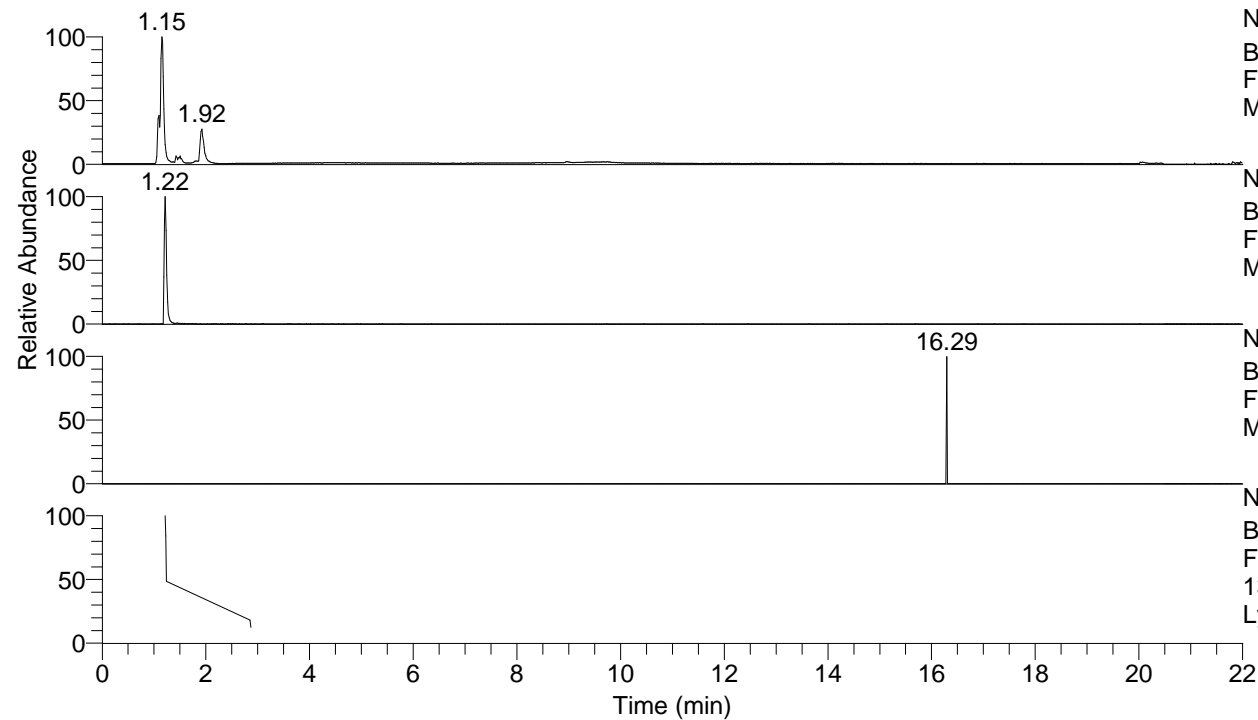


RT: 0.00 - 22.00



NL: 8.68E7
Base Peak m/z= 50.00000-1500.00000 F:
FTMS + p ESI Full ms [100.00-1500.00]
MS LycGen3

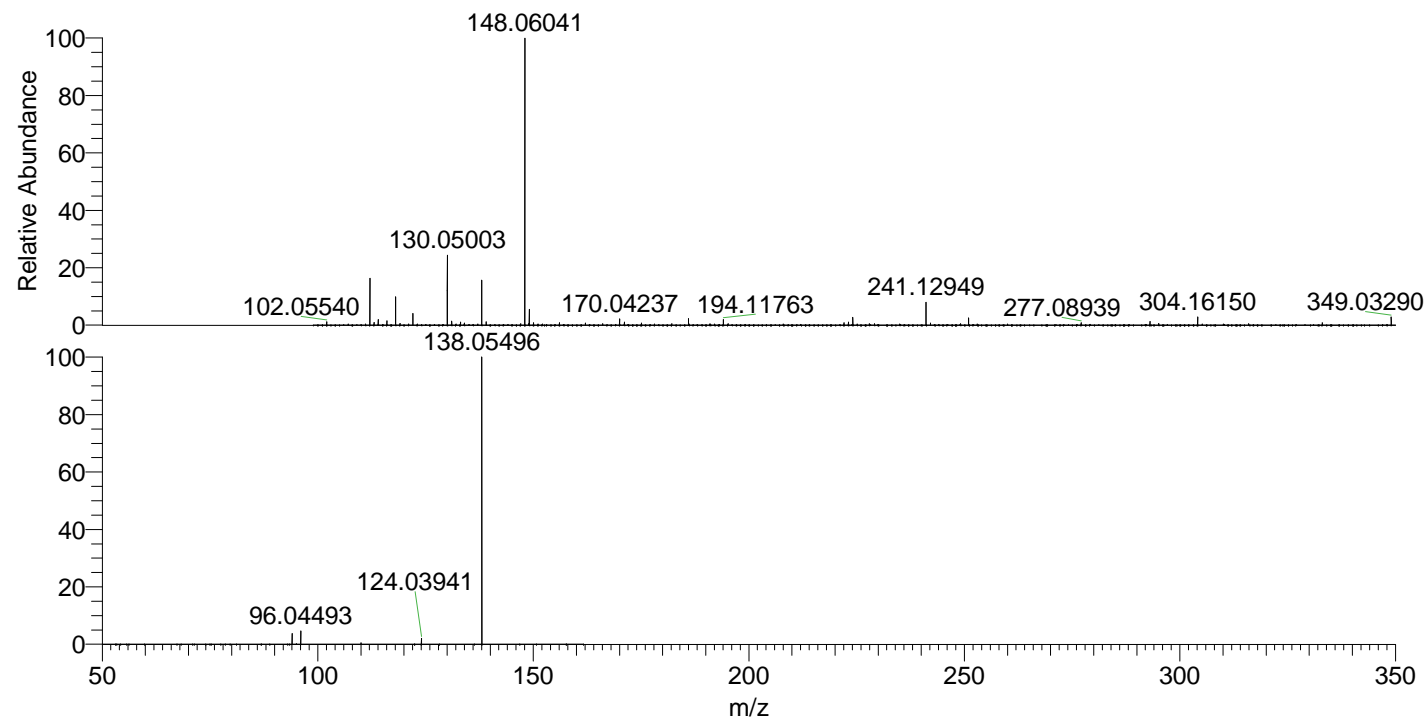
NL: 2.15E6
Base Peak m/z= 138.05481-138.05619 F:
FTMS + p ESI Full ms [100.00-1500.00]
MS LycGen3

NL: 1.10E3
Base Peak m/z= 275.10180-275.10456 F:
FTMS + p ESI Full ms [100.00-1500.00]
MS LycGen3

NL: 1.53E6
Base Peak m/z= 50.00000-1500.00000 F:
FTMS + p ESI d Full ms2
138.05@hcd35.00 [50.00-160.00] MS
LycGen3

LycGen3#486-497 RT: 1.21-1.24 AV: 3
F: FTMS + p ESI d Full ms2 138.05@h ...
m/z= 50.00000-1000.00000

m/z	Intensity	Relative
94.06567	43094.8	3.73
96.04493	54320.1	4.71
110.06031	6188.0	0.54
124.03941	23528.4	2.04
138.05496	1153897.6	100.00



NL: 1.36E7
LycGen3#487 RT: 1.22
AV: 1 T: FTMS + p ESI
Full lock ms
[100.00-1500.00]

NL: 1.15E6
LycGen3#410-533 RT:
1.21-1.24 AV: 3 F:
FTMS + p ESI d Full ms2
138.05@hcd35.00
[50.00-160.00]