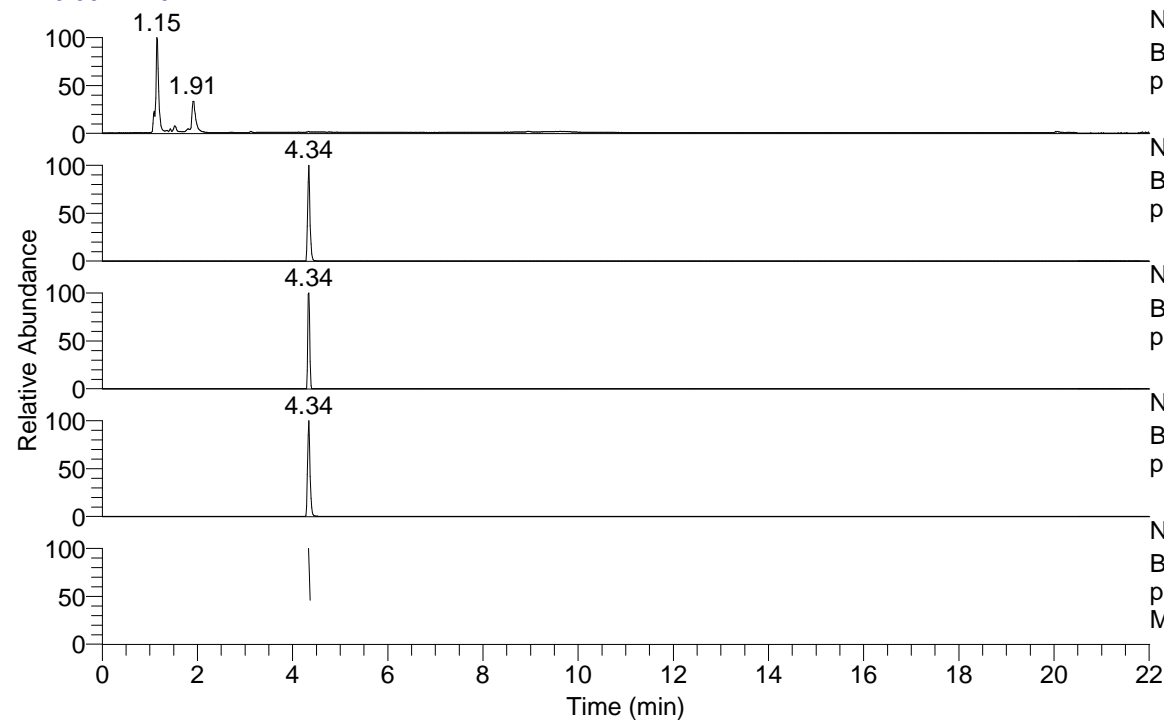


RT: 0.00 - 22.01



NL: 8.19E7
Base Peak m/z= 50.00000-1500.00000 F: FTMS +
p ESI Full ms [100.00-1500.00] MS LycGen1

NL: 4.68E5
Base Peak m/z= 177.10102-177.10456 F: FTMS +
p ESI Full ms [100.00-1500.00] MS LycGen1

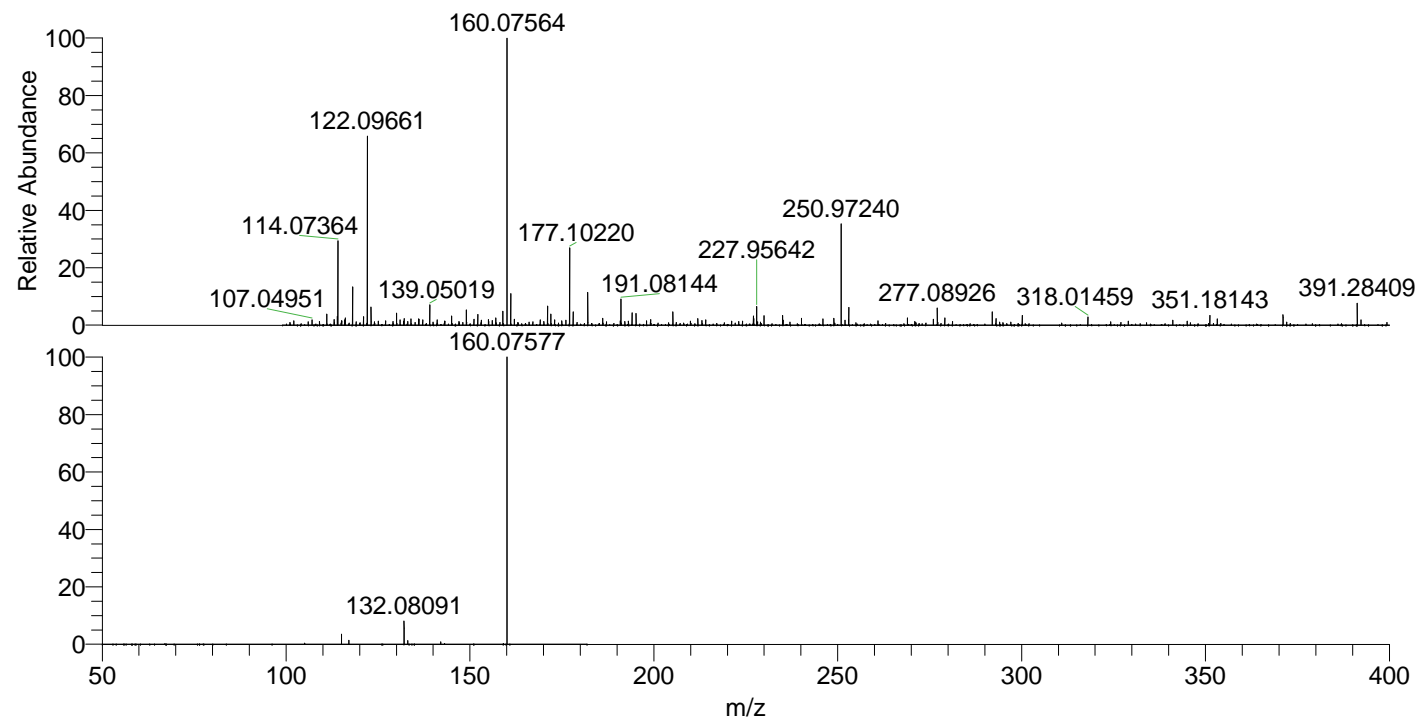
NL: 3.93E4
Base Peak m/z= 353.19422-353.20128 F: FTMS +
p ESI Full ms [100.00-1500.00] MS LycGen1

NL: 1.76E6
Base Peak m/z= 160.07464-160.07784 F: FTMS +
p ESI Full ms [100.00-1500.00] MS LycGen1

NL: 3.74E5
Base Peak m/z= 50.00000-1500.00000 F: FTMS +
p ESI d Full ms2 177.10@hcd35.00 [50.00-200.00]
MS LycGen1

LycGen1#1728-1740 RT: 4.34-4.37 AV: 3
F: FTMS + p ESI d Full ms2 177.10 ...
m/z= 50.00000-1000.00000

m/z	Intensity	Relative
132.08134	2198.9	0.85
149.02380	12513.8	4.82
160.07555	259407.9	100.00



NL: 1.73E6
LycGen1#1729 RT: 4.34
AV: 1 T: FTMS + p ESI
Full lock ms
[100.00-1500.00]

NL: 5.50E5
LycGen1#1681-1757 RT:
4.32-4.39 AV: 6 F: FTMS
+ p ESI d Full ms2
160.08@hcd35.00
[50.00-180.00]