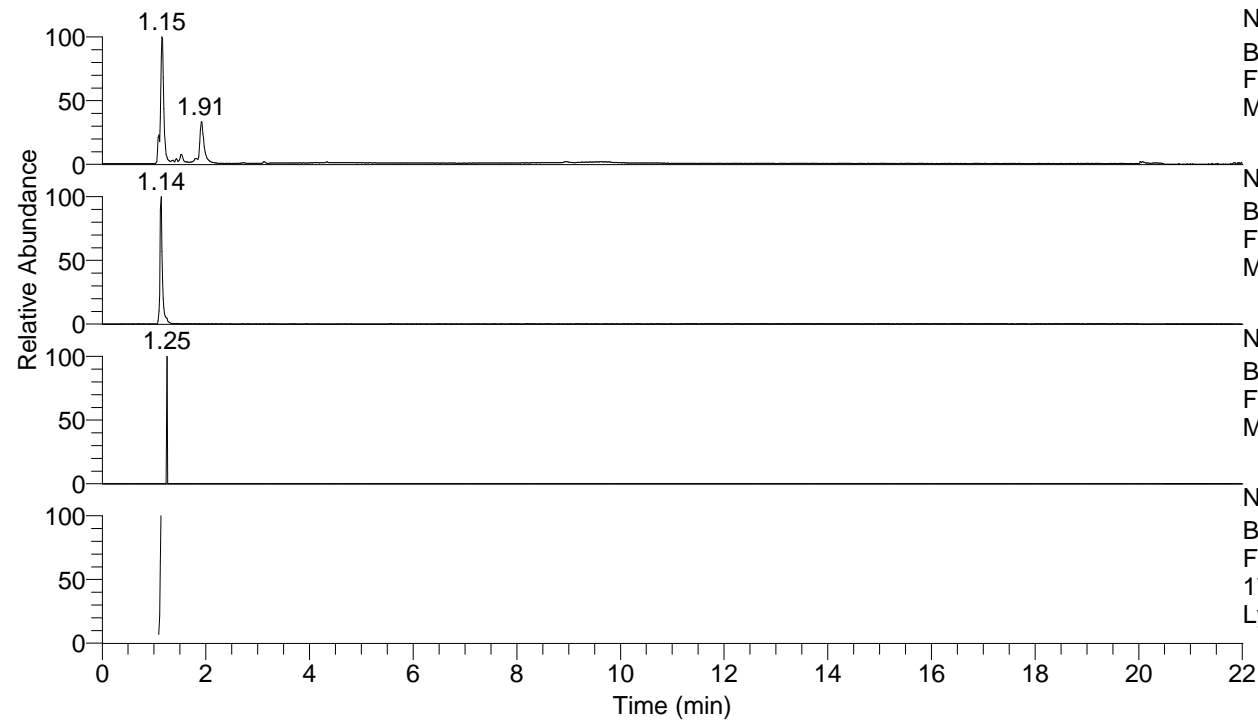


RT: 0.00 - 22.01



NL: 8.19E7  
Base Peak m/z= 50.00000-1500.00000 F:  
FTMS + p ESI Full ms [100.00-1500.00]  
MS LycGen1

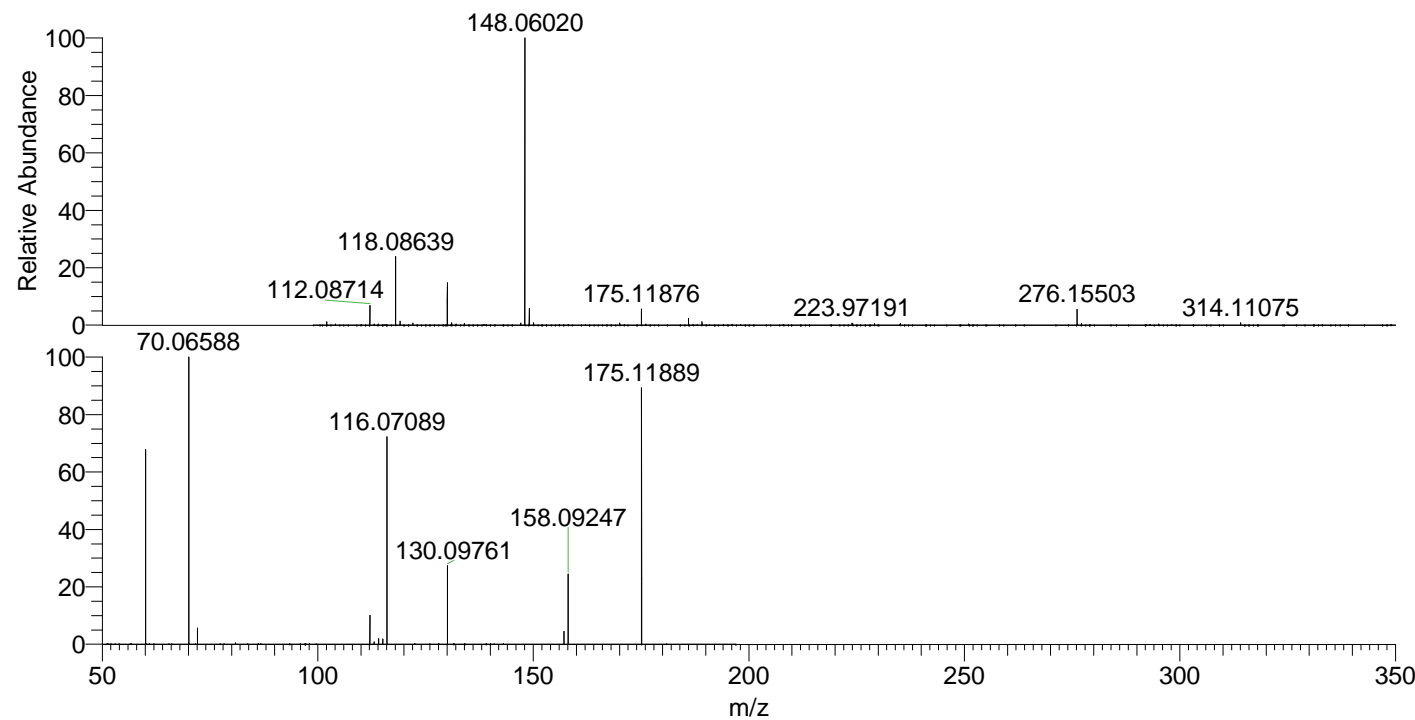
NL: 3.72E6  
Base Peak m/z= 175.11775-175.12125 F:  
FTMS + p ESI Full ms [100.00-1500.00]  
MS LycGen1

NL: 1.53E3  
Base Peak m/z= 349.22769-349.23467 F:  
FTMS + p ESI Full ms [100.00-1500.00]  
MS LycGen1

NL: 5.92E5  
Base Peak m/z= 50.00000-1500.00000 F:  
FTMS + p ESI d Full ms2  
174.94@hcd35.00 [50.00-195.00] MS  
LycGen1

LycGen1#431-450 RT: 1.09-1.13 AV: 4  
F: FTMS + p ESI d Full ms2 174.94 ...  
m/z= 50.00000-1000.00000

m/z	Intensity	Relative
60.05648	188696.4	68.42
70.06588	275796.2	100.00
72.08153	16084.9	5.83
112.08719	28263.3	10.25
113.07141	2186.6	0.79
114.10261	5291.9	1.92
115.08698	5248.9	1.90
116.07089	205803.4	74.62
130.09761	77525.4	28.11
157.10839	12577.0	4.56
158.09247	69667.8	25.26
175.11889	247703.4	89.81



NL: 6.56E7  
LycGen1#451 RT: 1.14  
AV: 1 T: FTMS + p ESI  
Full ms [100.00-1500.00]

NL: 2.75E5  
LycGen1#393-474 RT:  
1.09-1.13 AV: 4 F:  
FTMS + p ESI d Full ms2  
174.94@hcd35.00  
[50.00-195.00]