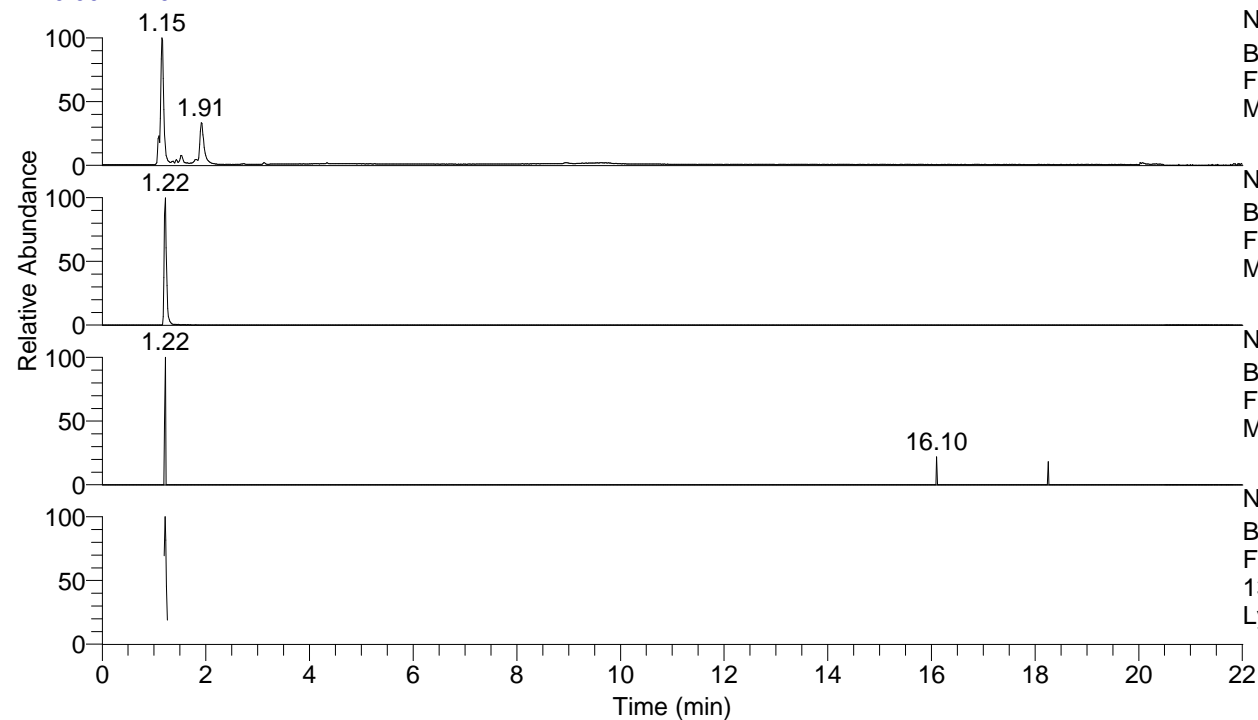


RT: 0.00 - 22.01



NL: 8.19E7
Base Peak m/z= 50.00000-1500.00000 F:
FTMS + p ESI Full ms [100.00-1500.00]
MS LycGen1

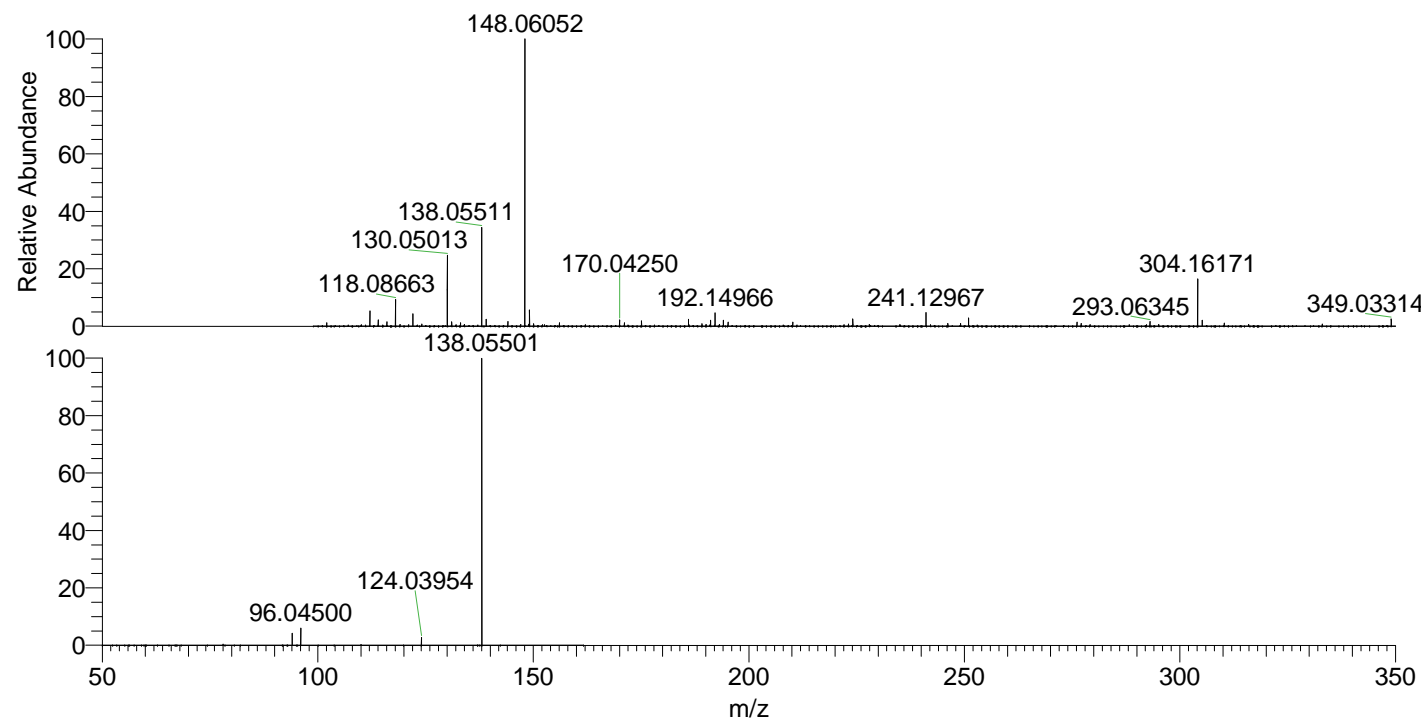
NL: 4.02E6
Base Peak m/z= 138.05481-138.05619 F:
FTMS + p ESI Full ms [100.00-1500.00]
MS LycGen1

NL: 6.24E3
Base Peak m/z= 275.10180-275.10456 F:
FTMS + p ESI Full ms [100.00-1500.00]
MS LycGen1

NL: 2.99E6
Base Peak m/z= 50.00000-1500.00000 F:
FTMS + p ESI d Full ms2
138.05@hcd35.00 [50.00-160.00] MS
LycGen1

LycGen1#479-503 RT: 1.20-1.26 AV: 5
F: FTMS + p ESI d Full ms2 138.05@h ...
m/z= 50.00000-1000.00000

m/z	Intensity	Relative
94.06572	73037.4	4.16
96.04500	103070.8	5.87
124.03954	48238.7	2.75
138.05501	1756763.3	100.00



NL: 1.16E7
LycGen1#487 RT: 1.22
AV: 1 T: FTMS + p ESI
Full ms [100.00-1500.00]

NL: 1.72E6
LycGen1#412-530 RT:
1.20-1.26 AV: 5 F:
FTMS + p ESI d Full ms2
138.05@hcd35.00
[50.00-160.00]