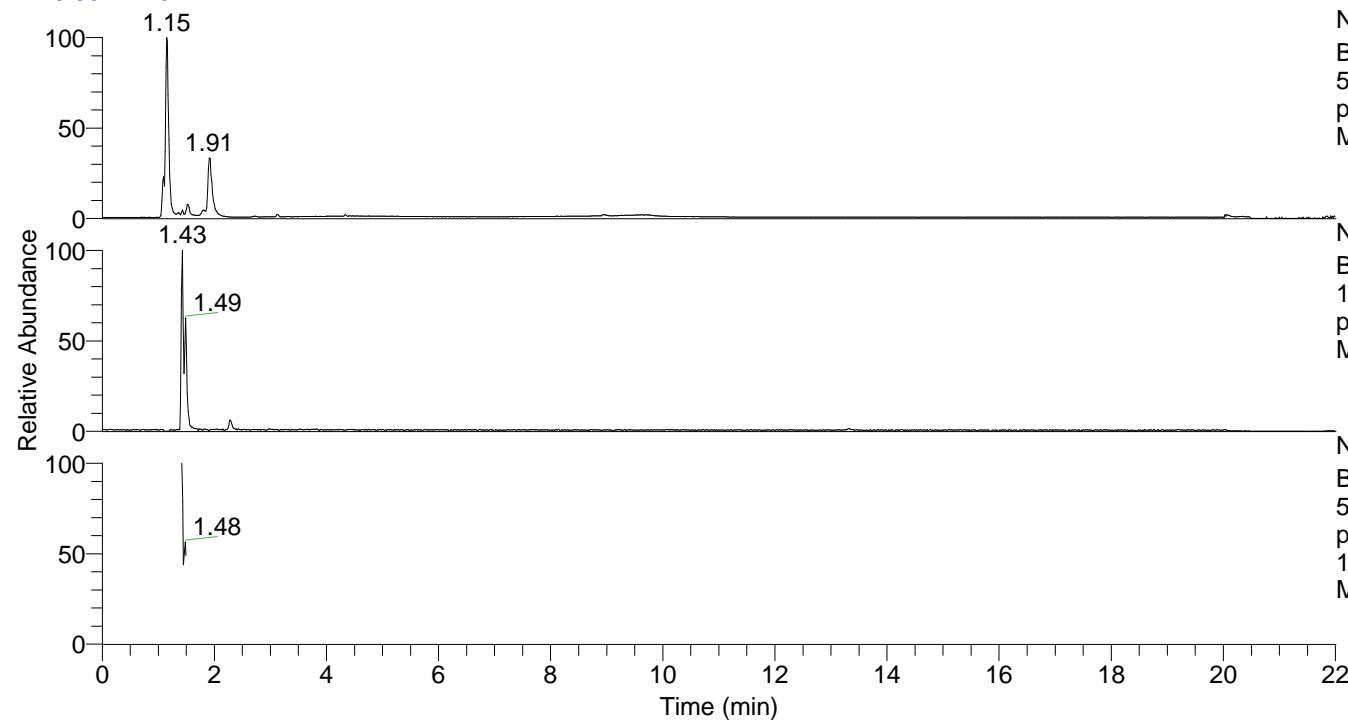


RT: 0.00 - 22.01



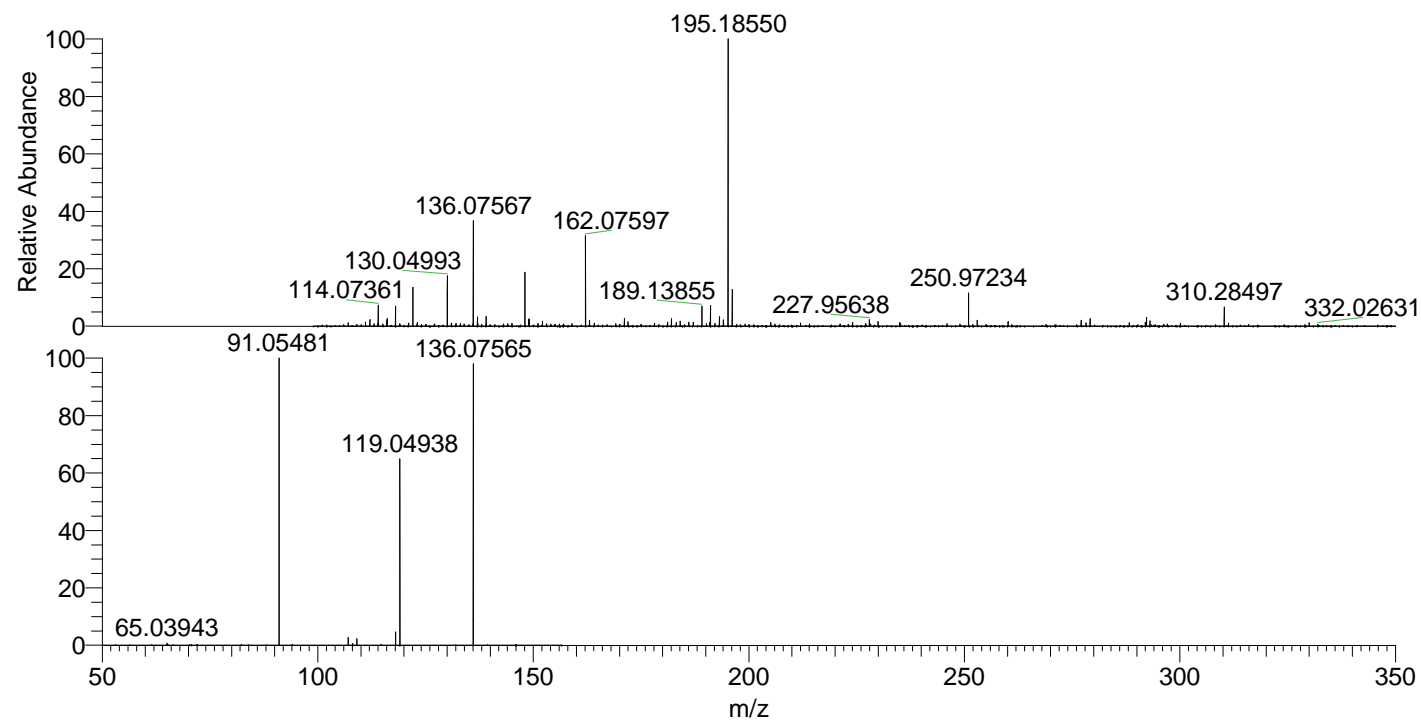
NL: 8.19E7
Base Peak m/z=
50.00000-1500.00000 F: FTMS +
p ESI Full ms [100.00-1500.00]
MS LycGen1

NL: 1.40E6
Base Peak m/z=
136.07555-136.07691 F: FTMS +
p ESI Full ms [100.00-1500.00]
MS LycGen1

NL: 5.10E5
Base Peak m/z=
50.00000-1500.00000 F: FTMS +
p ESI d Full ms2
136.08@hcd35.00 [50.00-155.00]
MS LycGen1

LycGen1#568-579 RT: 1.42-1.45 AV: 3
F: FTMS + p ESI d Full ms2 136.08 ...
m/z= 50.00000-1000.00000

m/z	Intensity	Relative
65.03943	2278.3	0.66
91.05481	346112.8	100.00
107.04960	9416.1	2.72
108.08093	1973.4	0.57
109.06510	8036.0	2.32
118.06529	16049.7	4.64
119.04938	220850.5	63.81
136.02154	30325.2	8.76
136.07565	333932.8	96.48



NL: 3.81E6
LycGen1#571 RT: 1.43
AV: 1 T: FTMS + p ESI
Full lock ms
[100.00-1500.00]

NL: 3.40E5
LycGen1#559-579 RT:
1.42-1.45 AV: 3 F:
FTMS + p ESI d Full ms2
136.08@hcd35.00
[50.00-155.00]