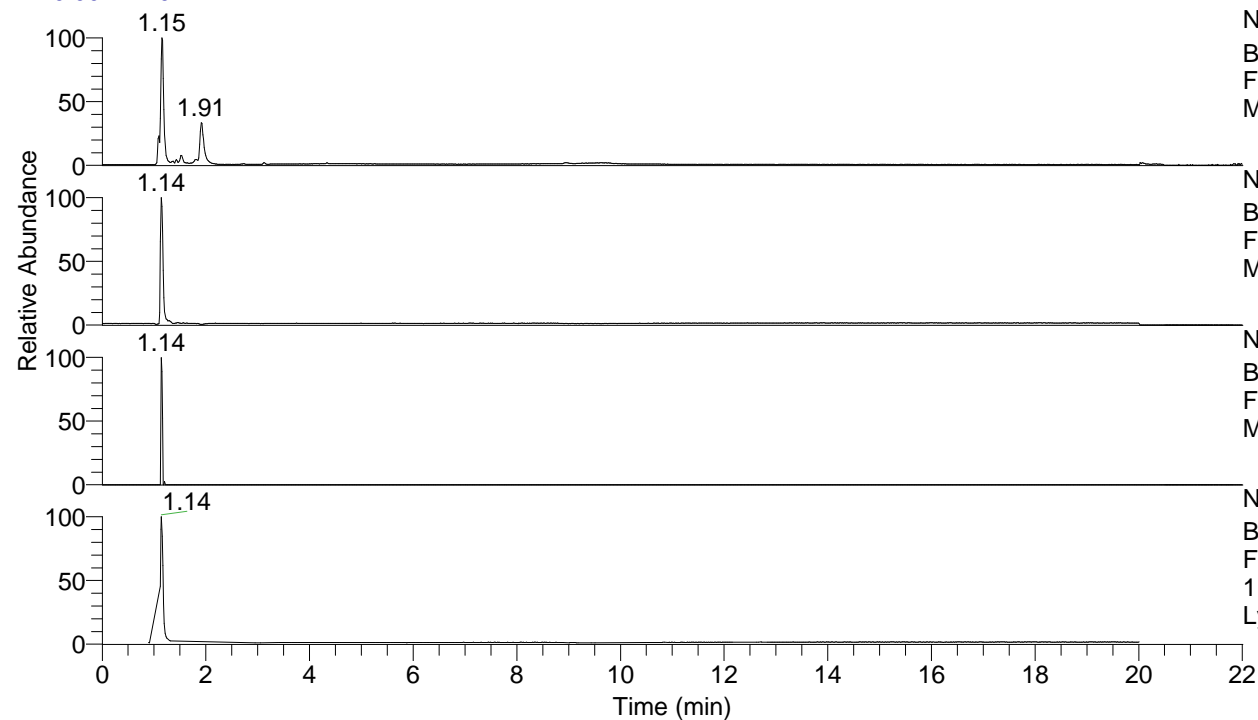


RT: 0.00 - 22.01



NL: 8.19E7
Base Peak m/z= 50.00000-1500.00000 F:
FTMS + p ESI Full ms [100.00-1500.00]
MS LycGen1

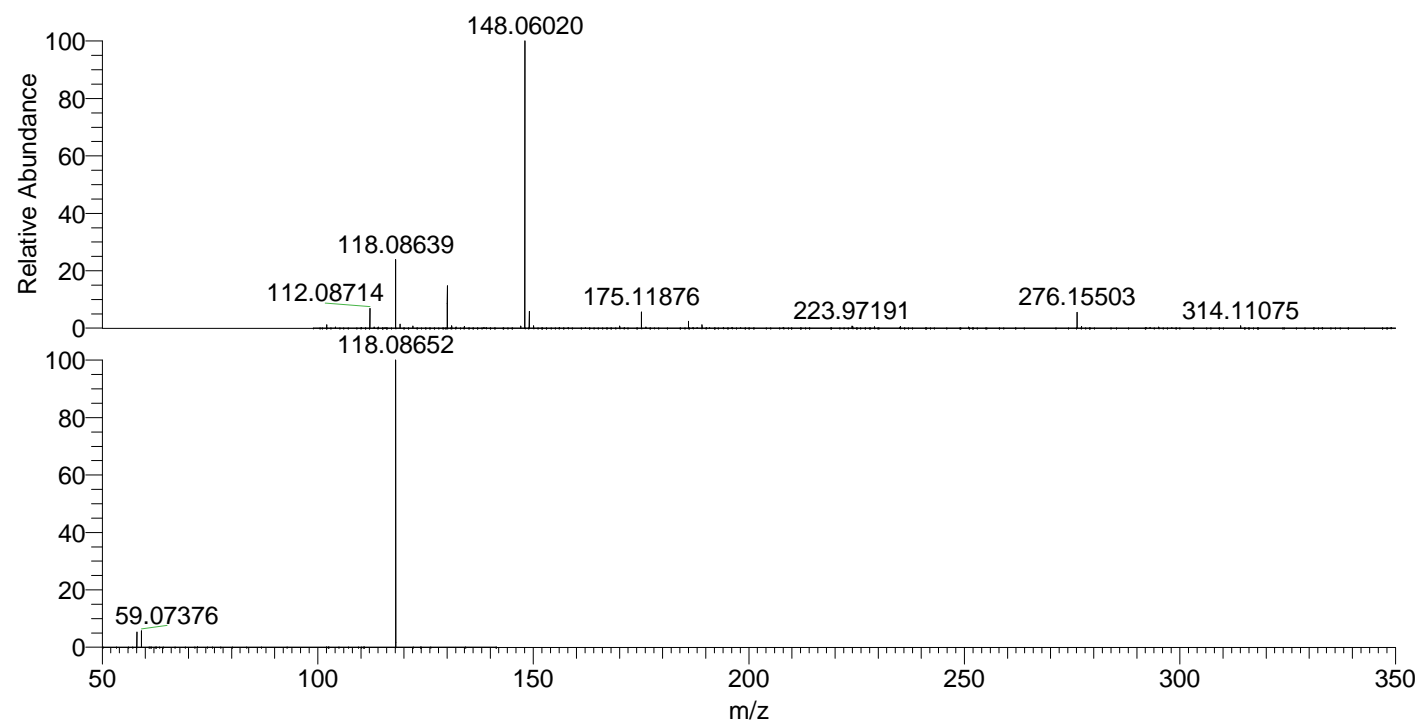
NL: 1.58E7
Base Peak m/z= 118.08621-118.08739 F:
FTMS + p ESI Full ms [100.00-1500.00]
MS LycGen1

NL: 3.95E5
Base Peak m/z= 235.16460-235.16696 F:
FTMS + p ESI Full ms [100.00-1500.00]
MS LycGen1

NL: 1.67E7
Base Peak m/z= 50.00000-1500.00000 F:
FTMS + p ESI d Full ms2
118.09@hcd35.00 [50.00-140.00] MS
LycGen1

LycGen1#443-485 RT: 1.12-1.21 AV: 8
F: FTMS + p ESI d Full ms2 118.09@h ...
m/z= 50.00000-1000.00000

m/z	Intensity	Relative
58.06592	447123.9	5.25
59.07376	506239.0	5.94
118.08653	8520223.0	100.00



NL: 6.56E7
LycGen1#451 RT: 1.14
AV: 1 T: FTMS + p ESI
Full ms [100.00-1500.00]

NL: 9.47E6
LycGen1#421-483 RT:
1.12-1.20 AV: 7 F:
FTMS + p ESI d Full ms2
118.09@hcd35.00
[50.00-140.00]