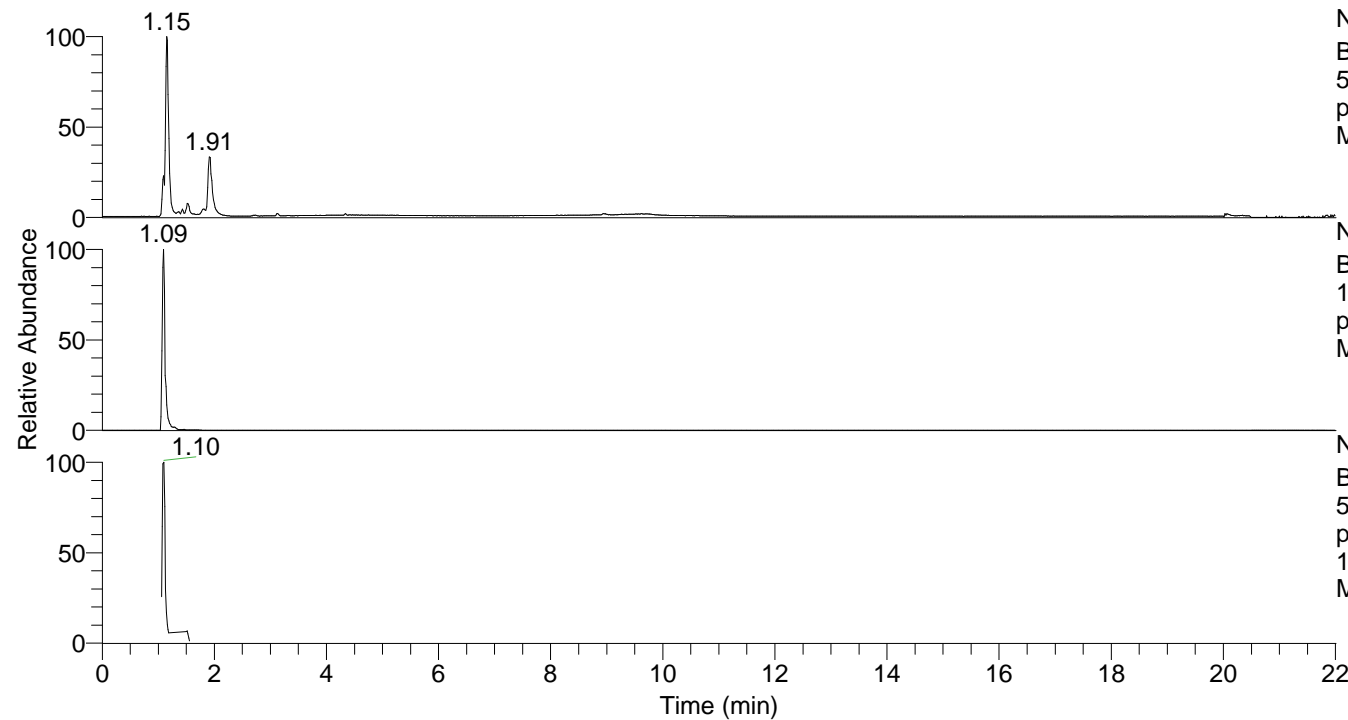


RT: 0.00 - 22.01



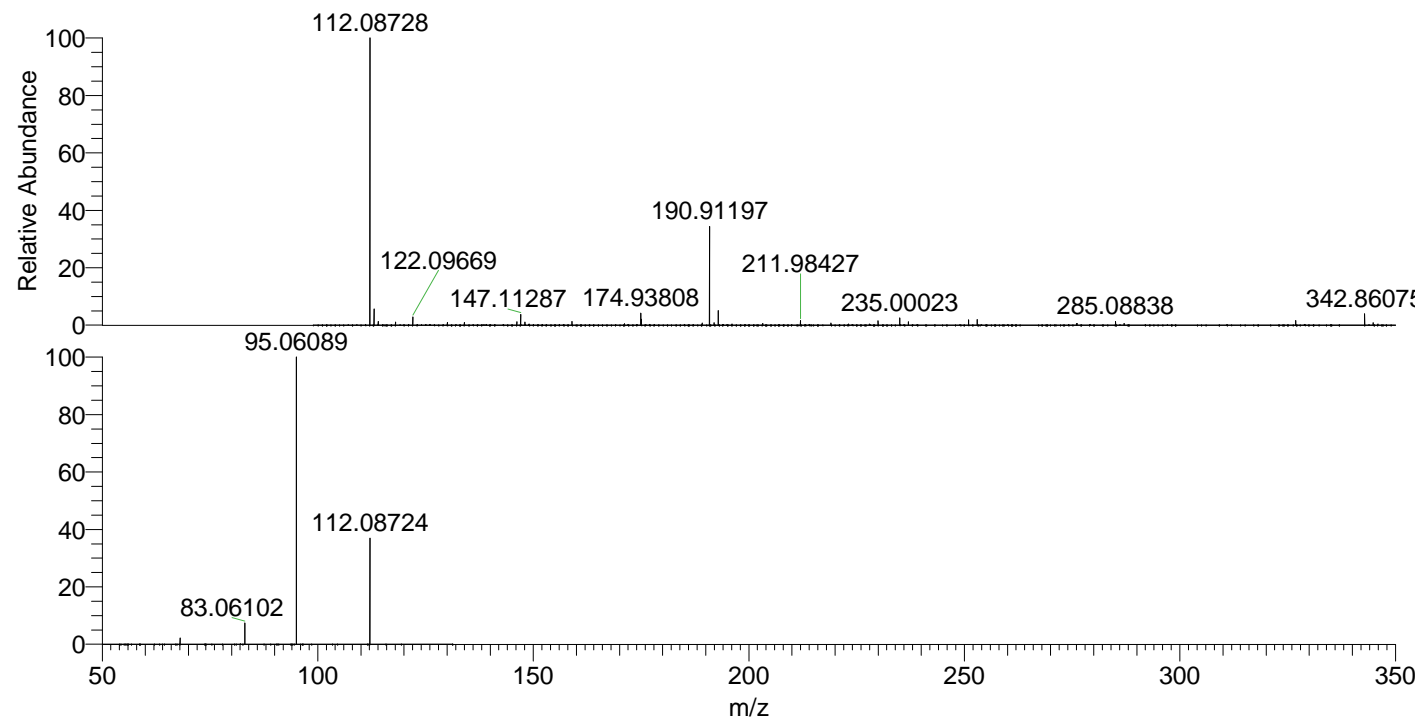
NL: 8.19E7  
Base Peak m/z=  
50.00000-1500.00000 F: FTMS +  
p ESI Full ms [100.00-1500.00]  
MS LycGen1

LycGen1#418-446 RT: 1.06-1.13 AV: 6  
F: FTMS + p ESI d Full ms2 112.05@hc ...  
m/z= 50.00000-1000.00000

m/z	Intensity	Relative
68.05027	366576.8	2.24
83.06102	1224655.4	7.48
95.06089	16373942.0	100.00
112.08724	6151523.0	37.57

NL: 1.90E7  
Base Peak m/z=  
112.08691-112.08803 F: FTMS +  
p ESI Full ms [100.00-1500.00]  
MS LycGen1

NL: 2.66E7  
Base Peak m/z=  
50.00000-1500.00000 F: FTMS +  
p ESI d Full ms2  
112.05@hcd35.00 [50.00-130.00]  
MS LycGen1



NL: 1.84E7  
LycGen1#433 RT: 1.09  
AV: 1 T: FTMS + p ESI  
Full ms [100.00-1500.00]

NL: 1.63E7  
LycGen1#415-447 RT:  
1.06-1.13 AV: 6 F:  
FTMS + p ESI d Full ms2  
112.05@hcd35.00  
[50.00-130.00]