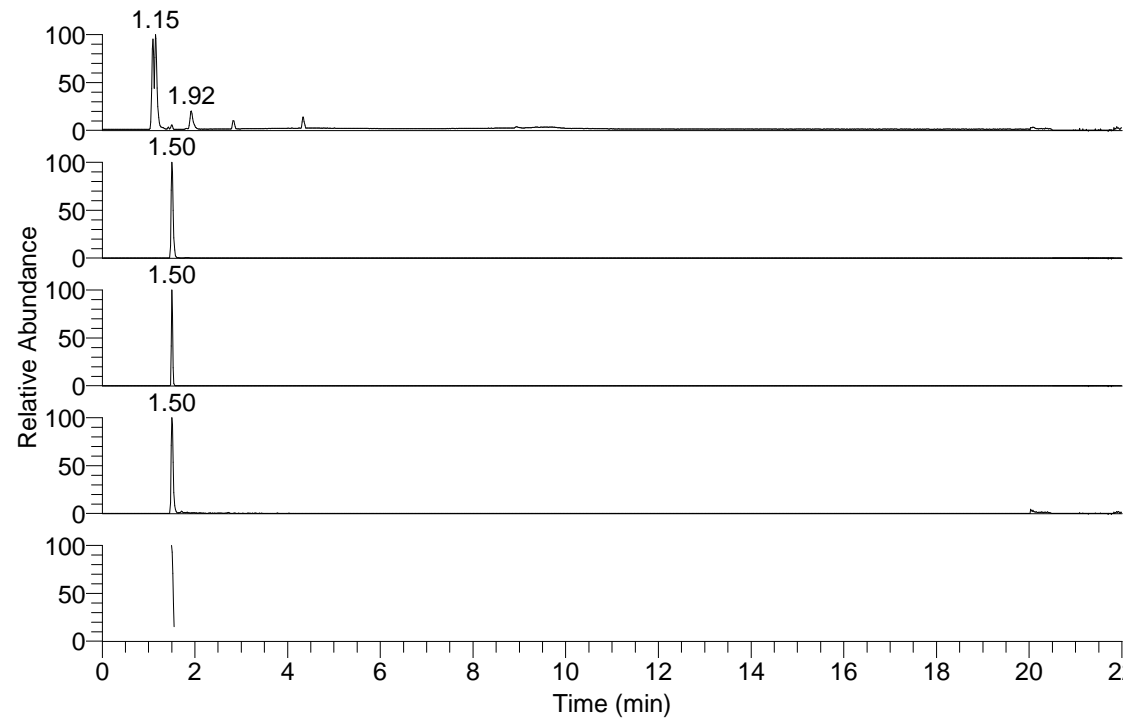


RT: 0.00 - 22.00



NL: 4.65E7
Base Peak m/z= 50.00000-1500.00000 F: FTMS + p
ESI Full ms [100.00-1500.00] MS Lpraegransdis

NL: 1.33E6
Base Peak m/z= 244.09213-244.09457 F: FTMS + p
ESI Full ms [100.00-1500.00] MS Lpraegransdis

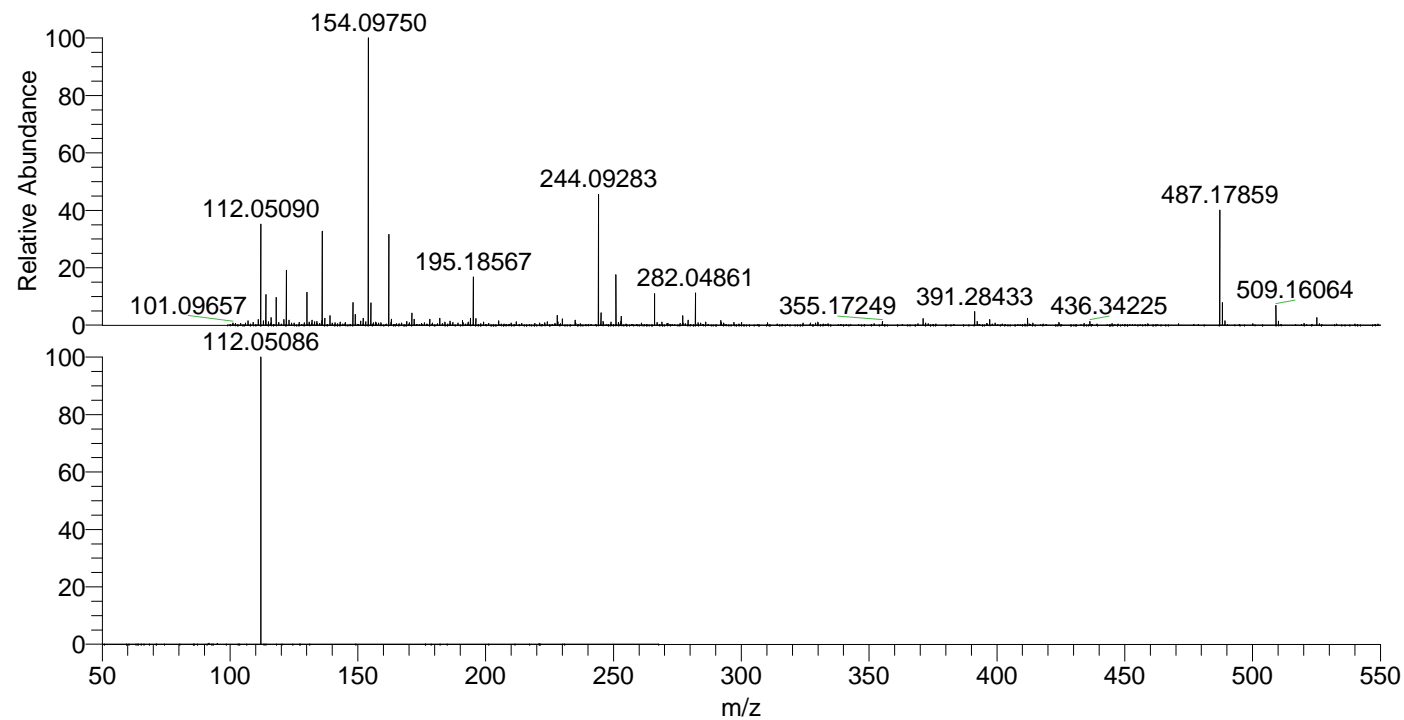
NL: 1.15E6
Base Peak m/z= 487.17643-487.18131 F: FTMS + p
ESI Full ms [100.00-1500.00] MS Lpraegransdis

NL: 9.86E5
Base Peak m/z= 112.05053-112.05165 F: FTMS + p
ESI Full ms [100.00-1500.00] MS Lpraegransdis

NL: 9.91E5
Base Peak m/z= 50.00000-1500.00000 F: FTMS + p
ESI d Full ms2 244.09@hcd35.00 [50.00-265.00] MS
Lpraegransdis

Lpraegransdis#599-621 RT: 1.50-1.55
F: FTMS + p ESI d Full ms2 244.09 ...
m/z= 50.00000-1000.00000

m/z	Intensity	Relative
112.05086	588417.6	100.00



NL: 2.76E6
Lpraegransdis#601 RT:
1.50 AV: 1 T: FTMS + p
ESI Full lock ms
[100.00-1500.00]

NL: 5.85E5
Lpraegransdis#497-688
RT: 1.50-1.55 AV: 5 F:
FTMS + p ESI d Full ms2
244.09@hcd35.00
[50.00-265.00]