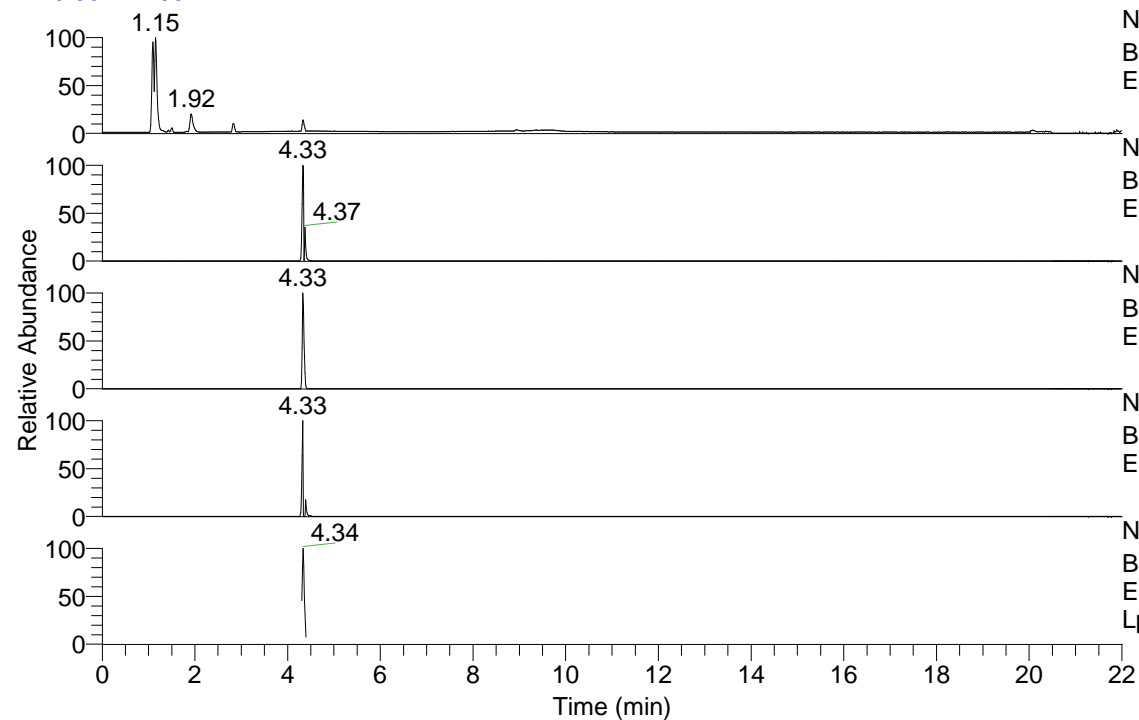


RT: 0.00 - 22.00



NL: 4.65E7  
Base Peak m/z= 50.00000-1500.00000 F: FTMS + p  
ESI Full ms [100.00-1500.00] MS Lpraegrandidis

NL: 1.82E6  
Base Peak m/z= 177.10189-177.10367 F: FTMS + p  
ESI Full ms [100.00-1500.00] MS Lpraegrandidis

NL: 3.70E5  
Base Peak m/z= 353.19598-353.19952 F: FTMS + p  
ESI Full ms [100.00-1500.00] MS Lpraegrandidis

NL: 6.42E6  
Base Peak m/z= 160.07544-160.07704 F: FTMS + p  
ESI Full ms [100.00-1500.00] MS Lpraegrandidis

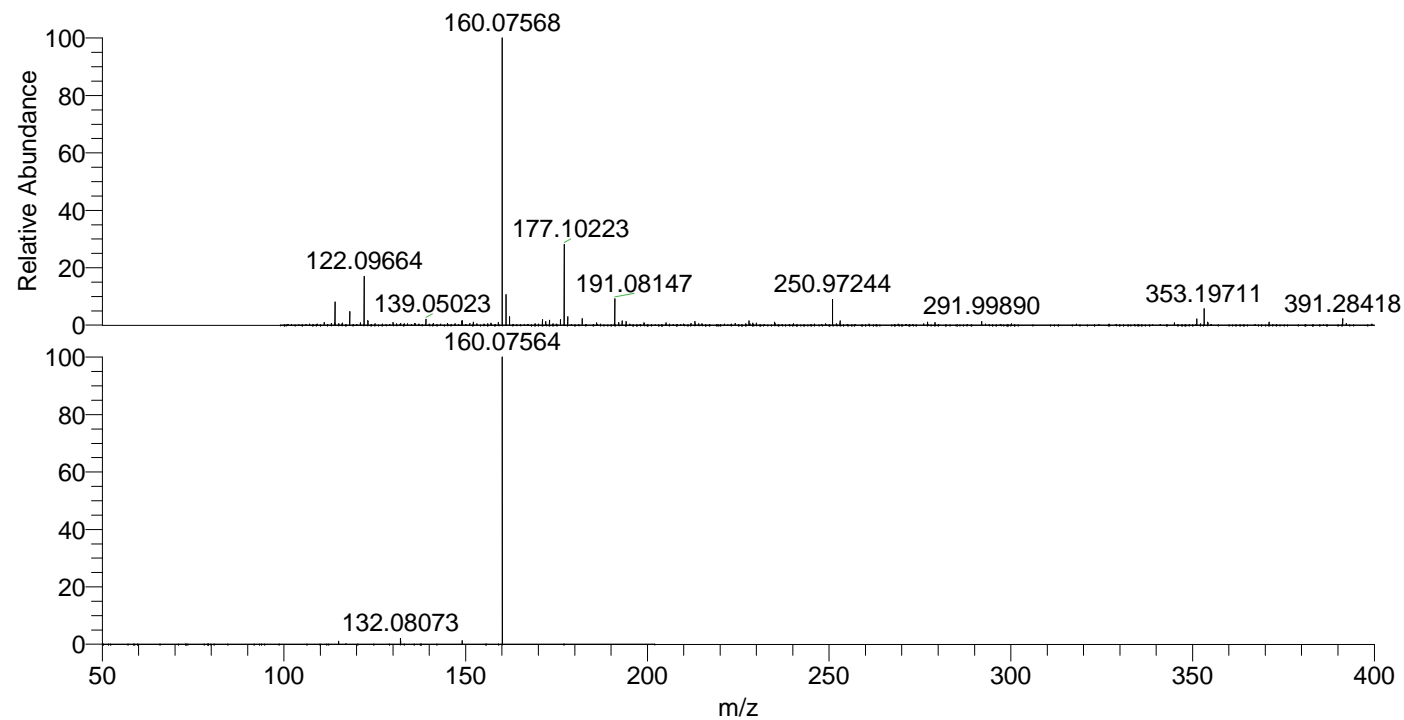
NL: 1.62E6  
Base Peak m/z= 50.00000-1500.00000 F: FTMS + p  
ESI d Full ms2 177.10@hcd35.00 [50.00-200.00] MS  
Lpraegrandidis

Lpraegrandidis#1722-1758 RT: 4.31-4.40

F: FTMS + p ESI d Full ms2 177.10 ...

m/z= 50.00000-1000.00000

m/z	Intensity	Relative
115.05446	8978.0	1.05
132.08073	18054.8	2.10
149.02324	11173.8	1.30
160.07564	858432.0	100.00



NL: 6.38E6  
Lpraegrandidis#1729 RT:  
4.33 AV: 1 T: FTMS + p  
ESI Full lock ms  
[100.00-1500.00]

NL: 8.57E5  
Lpraegrandidis#1666-1802  
RT: 4.31-4.40 AV: 7 F:  
FTMS + p ESI d Full ms2  
177.10@hcd35.00  
[50.00-200.00]