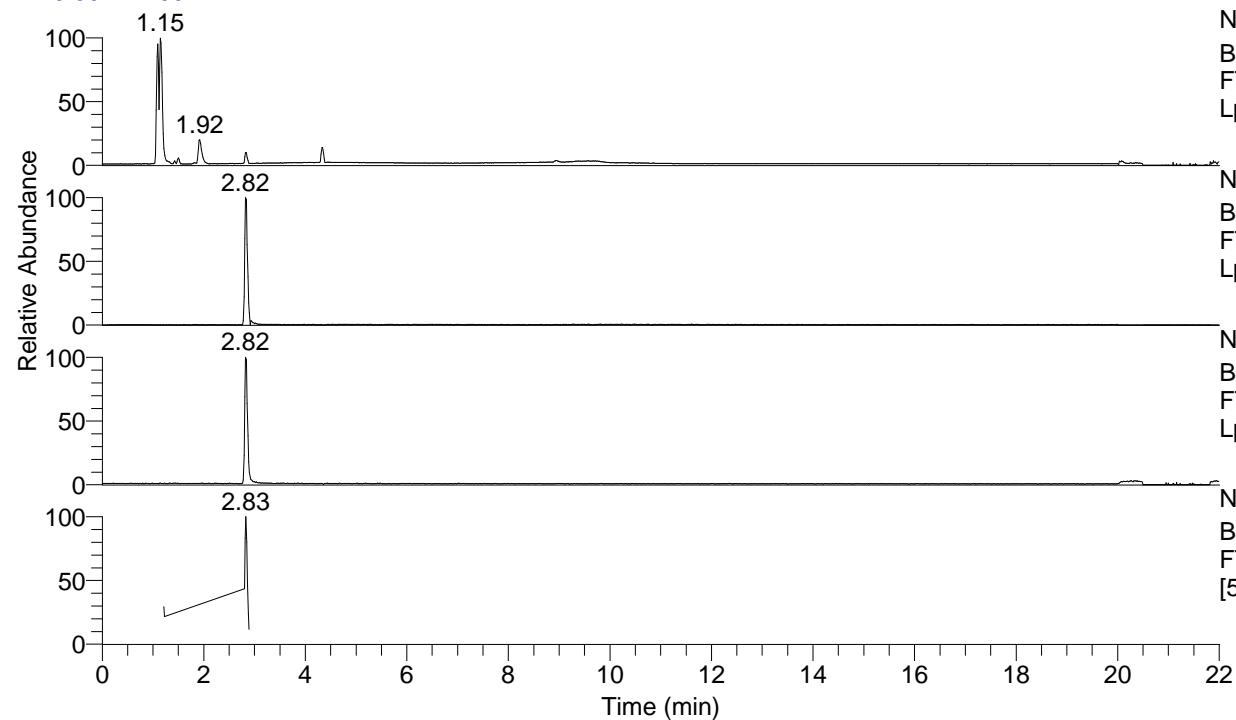


RT: 0.00 - 22.00



NL: 4.65E7  
 Base Peak m/z= 50.00000-1500.00000 F:  
 FTMS + p ESI Full ms [100.00-1500.00] MS  
 Lpraegransdis

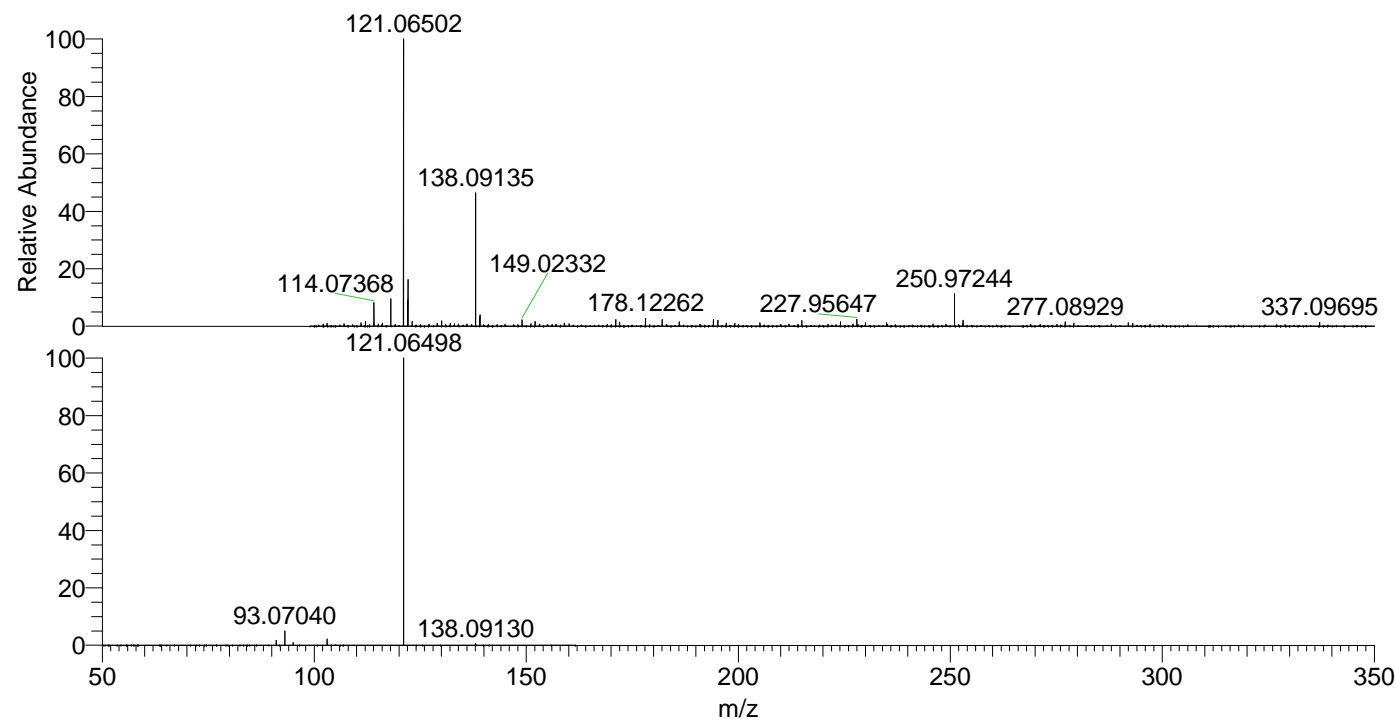
NL: 2.18E6  
 Base Peak m/z= 138.09119-138.09257 F:  
 FTMS + p ESI Full ms [100.00-1500.00] MS  
 Lpraegransdis

NL: 4.67E6  
 Base Peak m/z= 121.06473-121.06595 F:  
 FTMS + p ESI Full ms [100.00-1500.00] MS  
 Lpraegransdis

NL: 2.08E6  
 Base Peak m/z= 50.00000-1500.00000 F:  
 FTMS + p ESI d Full ms2 138.06@hcd35.00  
 [50.00-160.00] MS Lpraegransdis

Lpraegransdis#1121-1155 RT: 2.80-2.89  
 F: FTMS + p ESI d Full ms2 138.06@h ...  
 m/z= 50.00000-1000.00000

| m/z       | Intensity | Relative |
|-----------|-----------|----------|
| 91.05483  | 19392.2   | 1.78     |
| 93.07040  | 54614.3   | 5.01     |
| 95.04954  | 10125.0   | 0.93     |
| 103.05469 | 23983.6   | 2.20     |
| 121.06498 | 1090263.0 | 100.00   |
| 138.09130 | 7166.6    | 0.66     |



NL: 4.52E6  
 Lpraegransdis#1129 RT:  
 2.82 AV: 1 T: FTMS + p  
 ESI Full lock ms  
 [100.00-1500.00]

NL: 1.08E6  
 Lpraegransdis#1094-1184  
 RT: 2.80-2.89 AV: 7 F:  
 FTMS + p ESI d Full ms2  
 138.06@hcd35.00  
 [50.00-160.00]