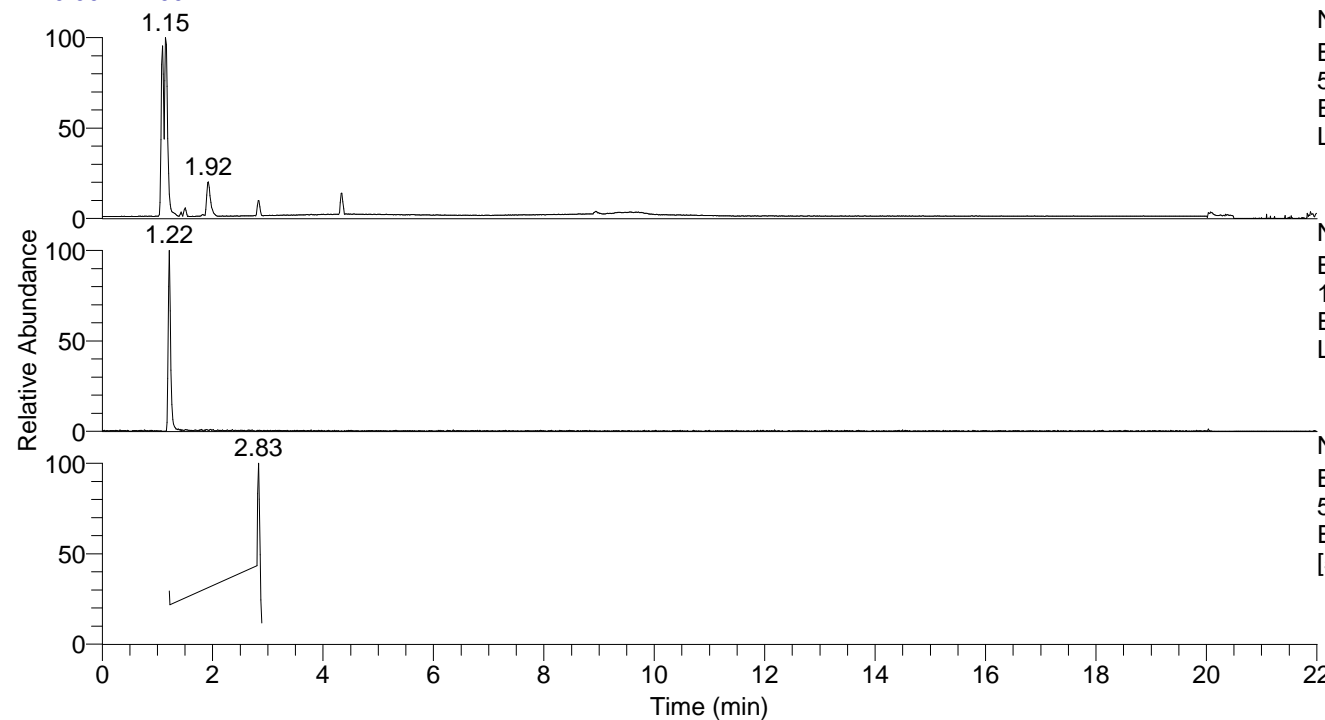


RT: 0.00 - 22.00



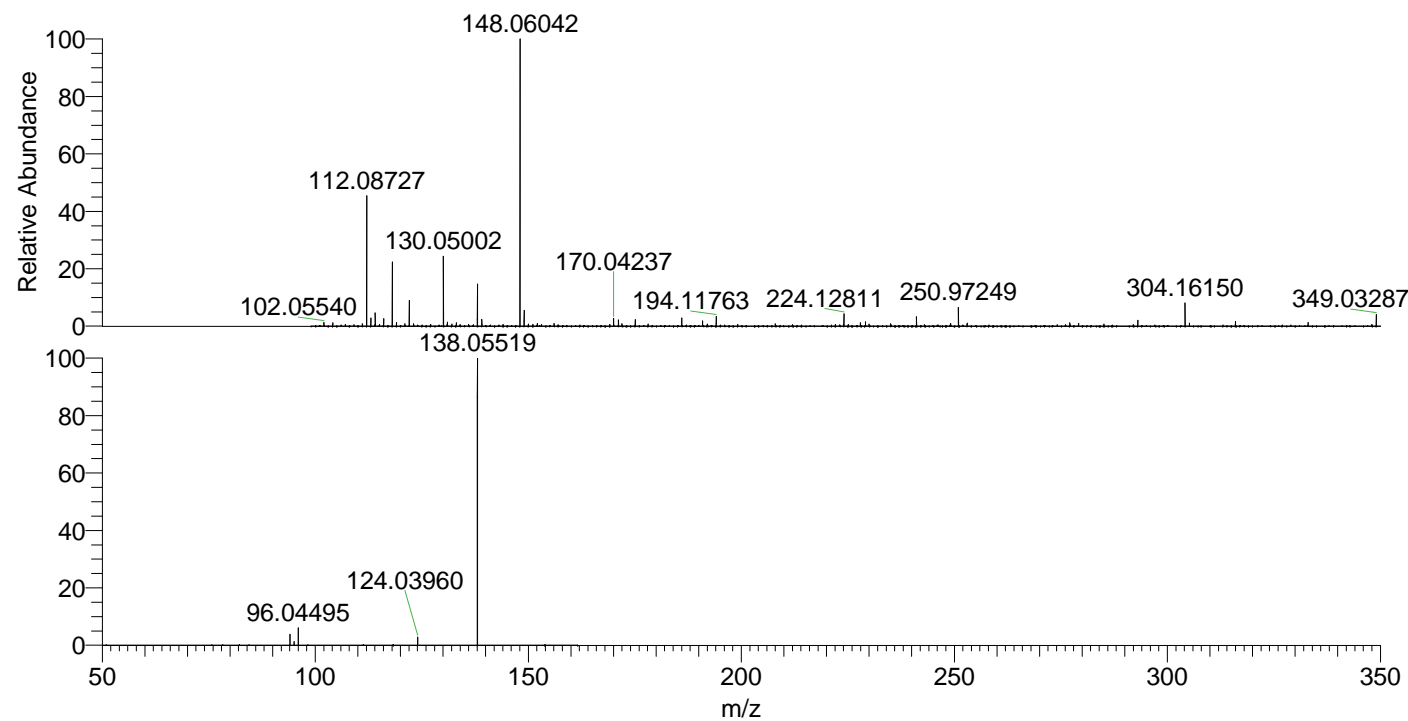
NL: 4.65E7  
 Base Peak m/z=  
 50.00000-1500.00000 F: FTMS + p  
 ESI Full ms [100.00-1500.00] MS  
 Lpraegrandis

NL: 8.92E5  
 Base Peak m/z=  
 138.05481-138.05619 F: FTMS + p  
 ESI Full ms [100.00-1500.00] MS  
 Lpraegrandis

NL: 2.08E6  
 Base Peak m/z=  
 50.00000-1500.00000 F: FTMS + p  
 ESI d Full ms2 138.06@hcd35.00  
 [50.00-160.00] MS Lpraegrandis

Lpraegrandis#486-492 RT: 1.21-1.23  
 F: FTMS + p ESI d Full ms2 138.06 ...  
 m/z= 50.00000-1000.00000

m/z	Intensity	Relative
94.06572	19997.0	3.93
95.06079	6979.1	1.37
96.04495	30858.5	6.07
124.03960	14627.9	2.88
138.05519	508493.5	100.00



NL: 6.08E6  
 Lpraegrandis#487 RT:  
 1.22 AV: 1 T: FTMS + p  
 ESI Full lock ms  
 [100.00-1500.00]

NL: 5.06E5  
 Lpraegrandis#408-547  
 RT: 1.21-1.23 AV: 2 F:  
 FTMS + p ESI d Full ms2  
 138.06@hcd35.00  
 [50.00-160.00]