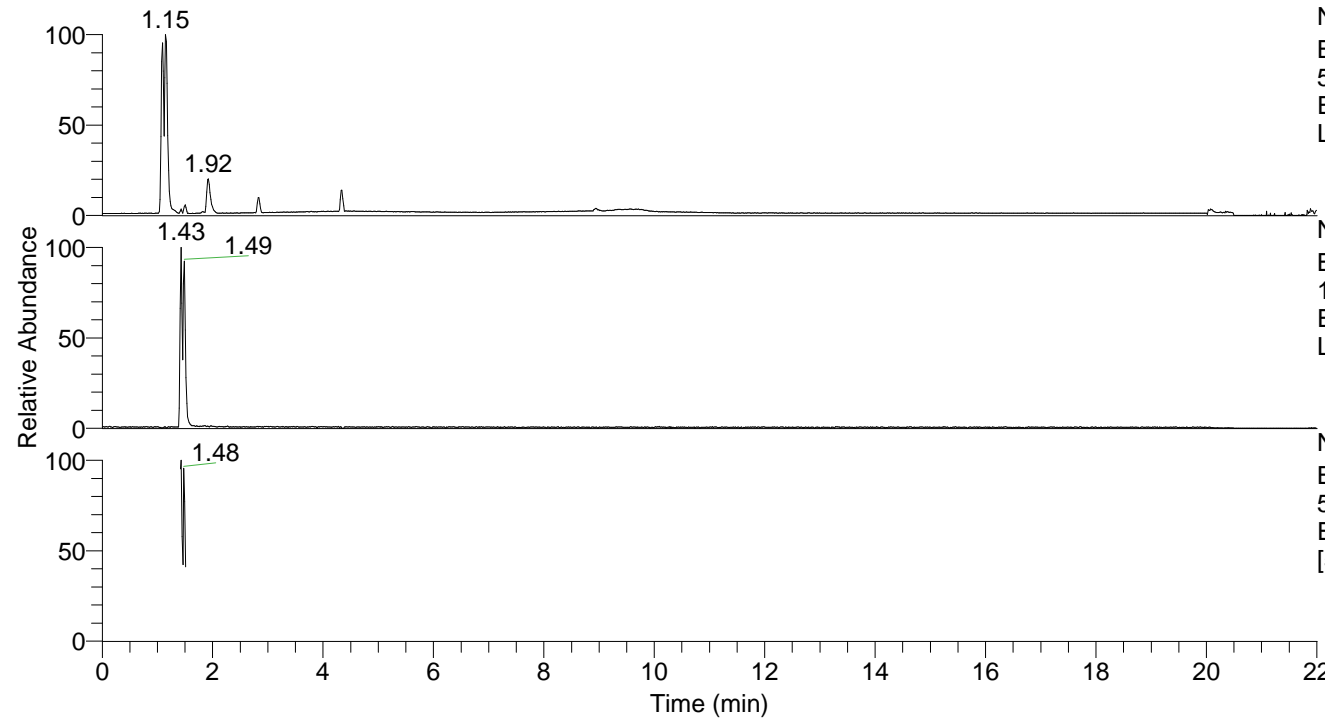


RT: 0.00 - 22.00



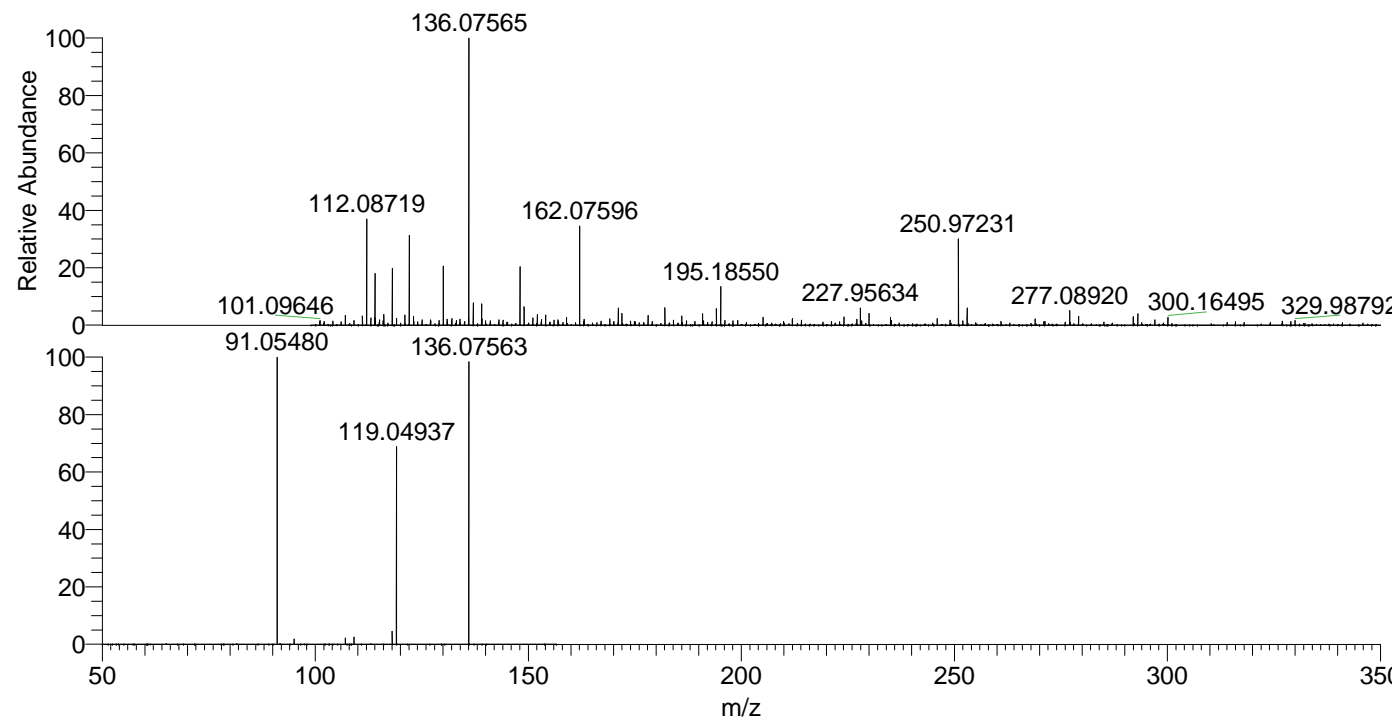
NL: 4.65E7  
Base Peak m/z=  
50.00000-1500.00000 F: FTMS + p  
ESI Full ms [100.00-1500.00] MS  
Lpraegrandis

NL: 1.66E6  
Base Peak m/z=  
136.07556-136.07692 F: FTMS + p  
ESI Full ms [100.00-1500.00] MS  
Lpraegrandis

NL: 5.59E5  
Base Peak m/z=  
50.00000-1500.00000 F: FTMS + p  
ESI d Full ms2 136.08@hcd35.00  
[50.00-155.00] MS Lpraegrandis

Lpraegrandis#568-603 RT: 1.42-1.51  
F: FTMS + p ESI d Full ms2 136.08 ...  
m/z= 50.00000-1000.00000

m/z	Intensity	Relative
91.05480	382835.5	100.00
95.06085	7065.3	1.85
107.04953	8248.4	2.15
109.06519	9854.9	2.57
118.06530	17690.5	4.62
119.04937	259994.4	67.91
136.02157	27597.6	7.21
136.07563	374232.4	97.75



NL: 1.66E6  
Lpraegrandis#571 RT:  
1.43 AV: 1 T: FTMS + p  
ESI Full lock ms  
[100.00-1500.00]

NL: 3.78E5  
Lpraegrandis#558-606  
RT: 1.42-1.51 AV: 7 F:  
FTMS + p ESI d Full ms2  
136.08@hcd35.00  
[50.00-155.00]