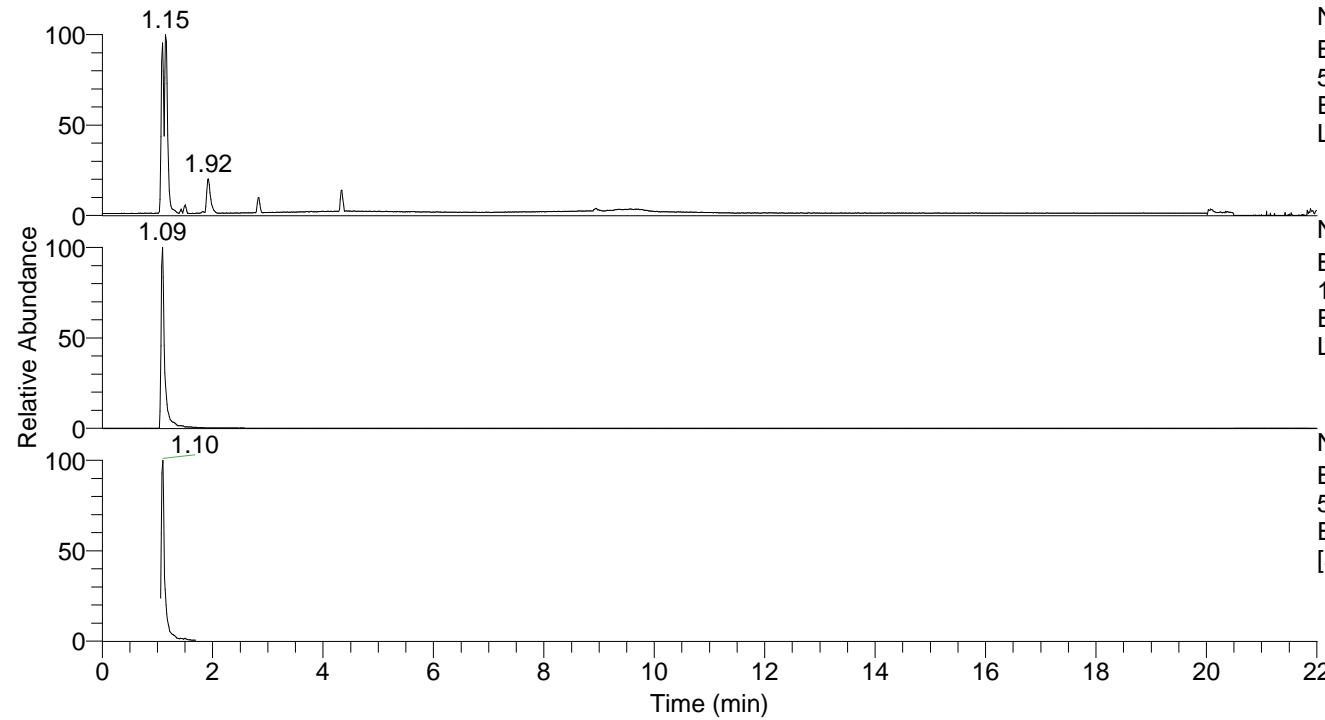


RT: 0.00 - 22.00



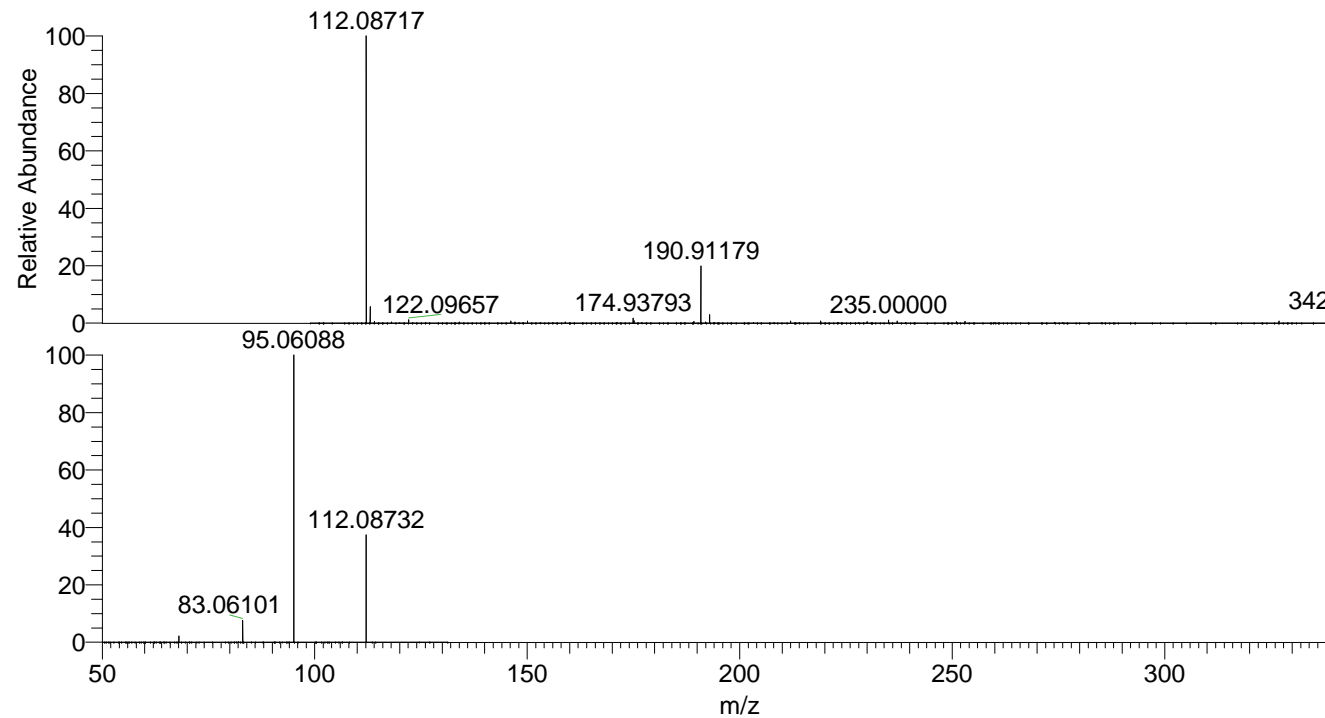
NL: 4.65E7
Base Peak m/z=
50.00000-1500.00000 F: FTMS + p
ESI Full ms [100.00-1500.00] MS
Lpraegrandidis

NL: 4.44E7
Base Peak m/z=
112.08691-112.08803 F: FTMS + p
ESI Full ms [100.00-1500.00] MS
Lpraegrandidis

NL: 6.28E7
Base Peak m/z=
50.00000-1500.00000 F: FTMS + p
ESI d Full ms2 112.05@hcd35.00
[50.00-130.00] MS Lpraegrandidis

Lpraegrandidis#428-495 RT: 1.08-1.24 AV: 12
F: FTMS + p ESI d Full ms2 112.05@hc ...
m/z= 50.00000-1000.00000

m/z	Intensity	Relative
68.05026	441373.4	2.18
83.06102	1553449.8	7.69
95.06089	20209366.0	100.00
112.08732	7706099.0	38.13



NL: 4.21E7
Lpraegrandidis#433 RT:
1.09 AV: 1 T: FTMS + p
ESI Full ms
[100.00-1500.00]

NL: 2.06E7
Lpraegrandidis#361-499
RT: 1.06-1.24 AV: 14 F:
FTMS + p ESI d Full ms2
112.05@hcd35.00
[50.00-130.00]