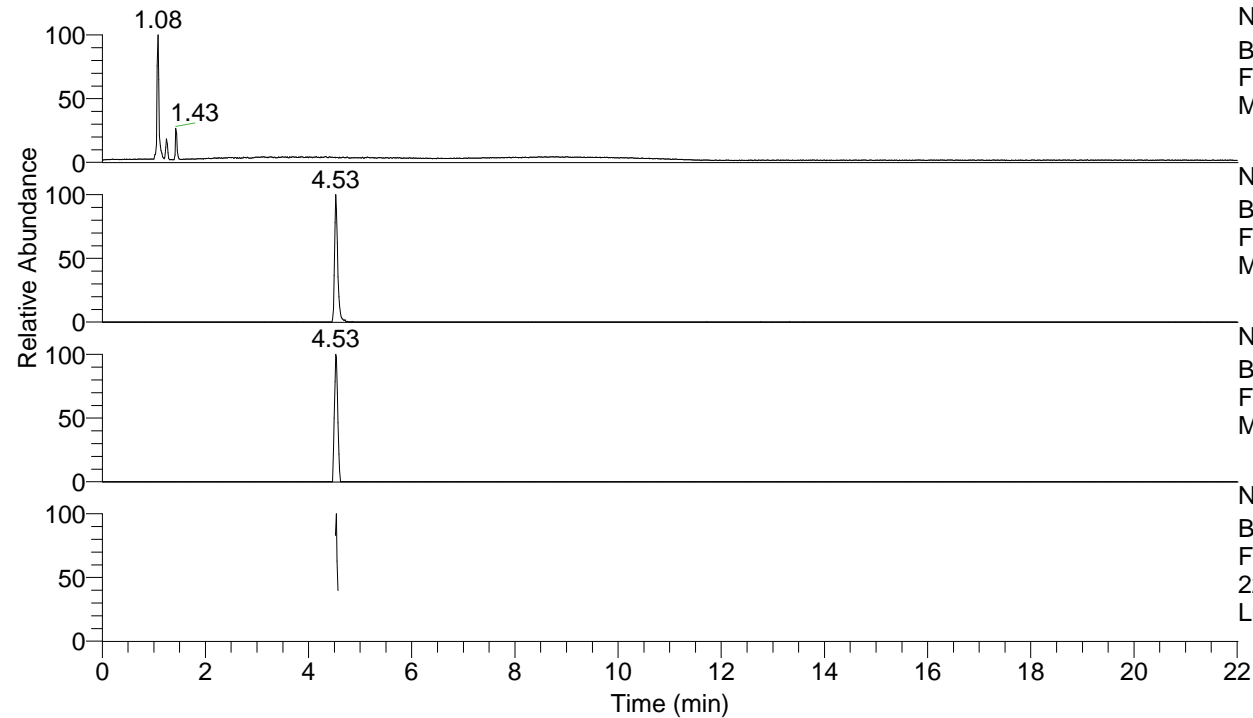


RT: 0.00 - 22.02



NL: 1.77E7
 Base Peak m/z= 50.00000-1500.00000 F:
 FTMS + p ESI Full ms [100.00-1500.00]
 MS Lmactans

NL: 3.09E5
 Base Peak m/z= 220.11739-220.11959 F:
 FTMS + p ESI Full ms [100.00-1500.00]
 MS Lmactans

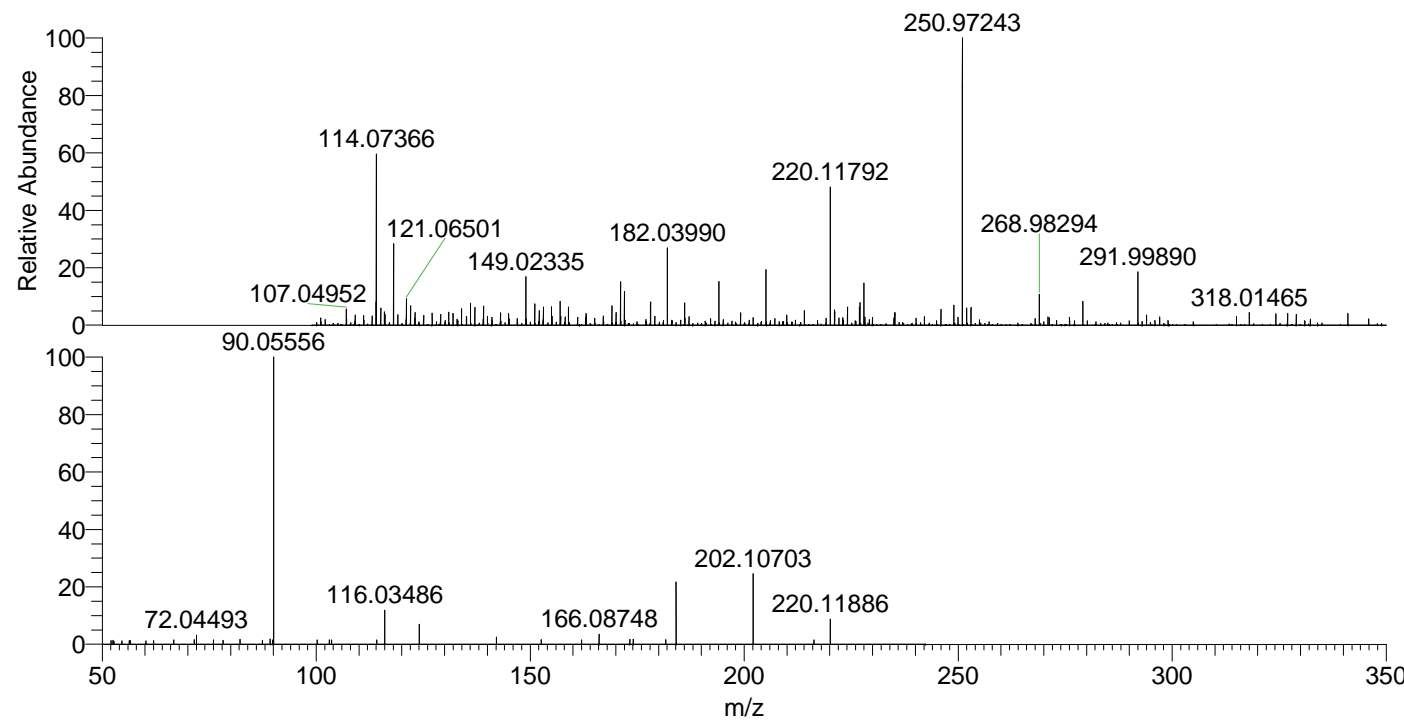
NL: 1.86E4
 Base Peak m/z= 242.09923-242.10165 F:
 FTMS + p ESI Full ms [100.00-1500.00]
 MS Lmactans

NL: 6.34E4
 Base Peak m/z= 50.00000-1500.00000 F:
 FTMS + p ESI d Full ms2
 220.12@hcd35.00 [50.00-240.00] MS
 Lmactans

Lmactans#1794-1812 RT: 4.52-4.57 AV: 4

F: FTMS + p ESI d Full ms2 220.12 ...
 m/z= 50.00000-1000.00000

m/z	Intensity	Relative
52.02932	539.1	1.25
52.53704	587.2	1.36
52.73883	470.7	1.09
54.61035	511.7	1.18
56.33023	555.1	1.28
56.52510	552.5	1.28
60.24242	516.5	1.19
62.00806	547.0	1.27
66.68856	631.5	1.46
71.47990	684.6	1.58
72.04493	1311.2	3.03
75.97911	610.9	1.41
78.21678	598.4	1.38
82.22229	729.5	1.69
87.43659	584.1	1.35
89.26315	775.6	1.79
89.86153	640.8	1.48
90.05556	43233.8	100.00
100.20297	651.7	1.51
103.07517	654.4	1.51
103.60029	618.9	1.43
114.14745	651.6	1.51
116.03486	5071.7	11.73
124.07603	2966.2	6.86
142.08650	1088.4	2.52
152.57120	675.0	1.56
161.98075	624.0	1.44
166.08748	1459.4	3.38
173.26632	742.6	1.72
174.08436	719.2	1.66
181.65897	675.3	1.56
184.09730	9081.9	21.01
202.10703	10534.6	24.37
216.31854	658.9	1.52
220.11886	3689.8	8.53



NL: 6.31E5
 Lmactans#1795 RT: 4.53
 AV: 1 T: FTMS + p ESI
 Full lock ms
 [100.00-1500.00]

NL: 4.18E4
 Lmactans#1670-1925
 RT: 4.52-4.57 AV: 4 F:
 FTMS + p ESI d Full ms2
 220.12@hcd35.00
 [50.00-240.00]