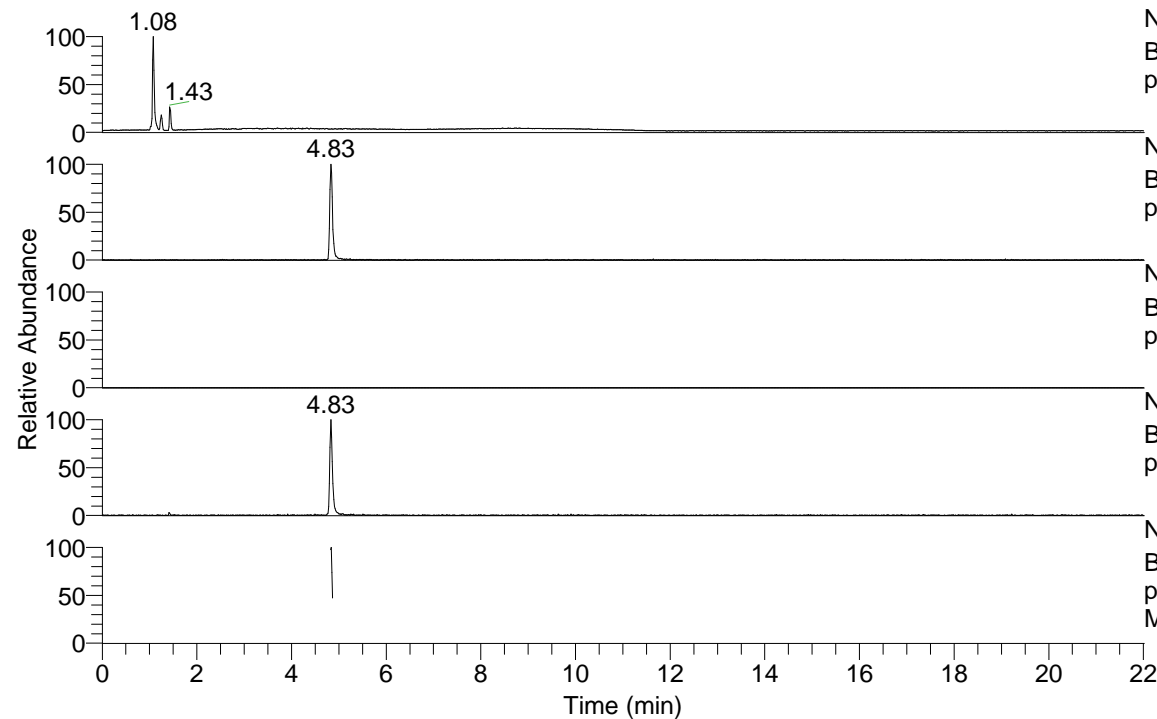


RT: 0.00 - 22.02



NL: 1.77E7  
 Base Peak m/z= 50.00000-1500.00000 F: FTMS +  
 p ESI Full ms [100.00-1500.00] MS Lmactans

NL: 4.36E5  
 Base Peak m/z= 166.08597-166.08763 F: FTMS +  
 p ESI Full ms [100.00-1500.00] MS Lmactans

NL: 0  
 Base Peak m/z= 331.16412-331.16744 F: FTMS +  
 p ESI Full ms [100.00-1500.00] MS Lmactans

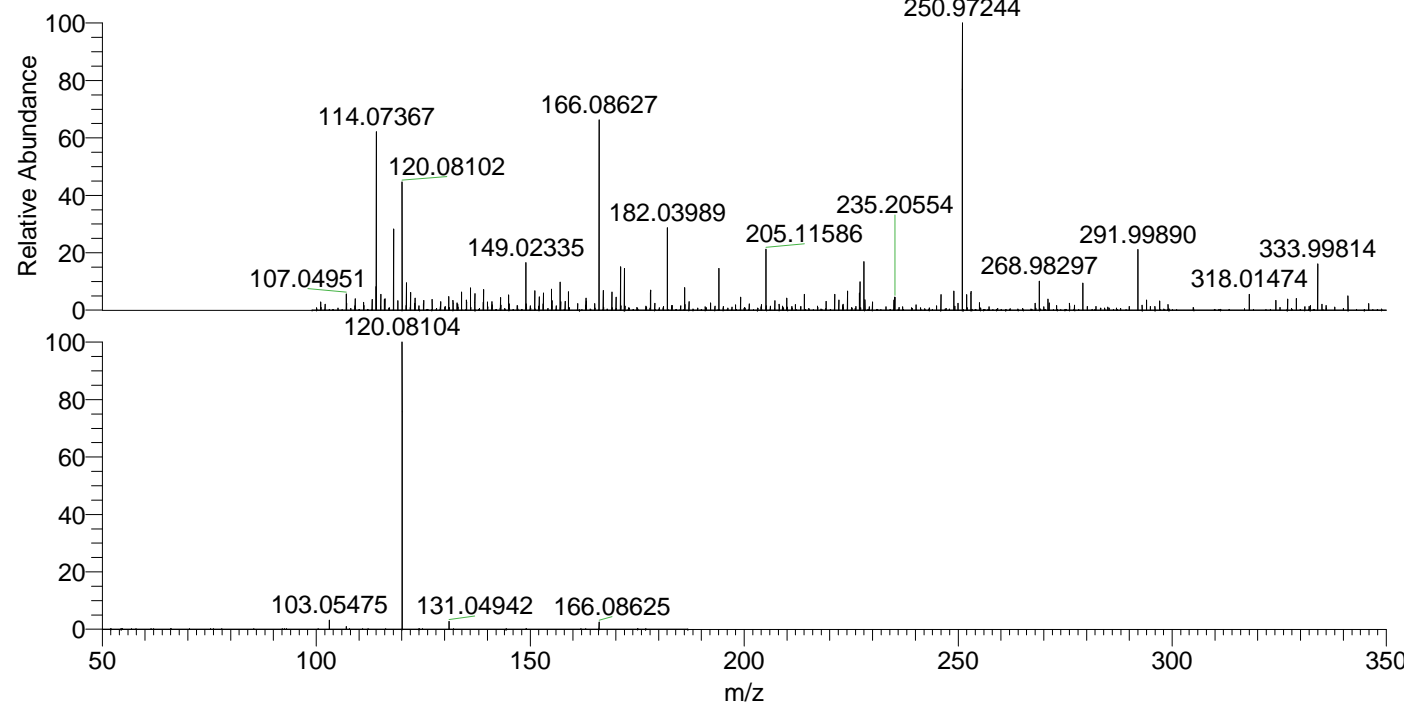
NL: 2.85E5  
 Base Peak m/z= 120.08072-120.08192 F: FTMS +  
 p ESI Full ms [100.00-1500.00] MS Lmactans

NL: 4.44E5  
 Base Peak m/z= 50.00000-1500.00000 F: FTMS +  
 p ESI d Full ms2 166.09@hcd35.00 [50.00-185.00]  
 MS Lmactans

Lmactans#1913-1931 RT: 4.82-4.87 AV: 4

F: FTMS + p ESI d Full ms2 166.09 ...  
 m/z= 50.00000-1000.00000

m/z	Intensity	Relative
103.05475	10378.1	3.15
107.04970	3008.4	0.91
120.08104	329680.6	100.00
131.04942	9104.4	2.76
166.08625	8629.4	2.62



NL: 6.25E5  
 Lmactans#1915 RT: 4.83  
 AV: 1 T: FTMS + p ESI  
 Full lock ms  
 [100.00-1500.00]

NL: 3.27E5  
 Lmactans#1812-2019  
 RT: 4.82-4.87 AV: 4 F:  
 FTMS + p ESI d Full ms2  
 166.09@hcd35.00  
 [50.00-185.00]