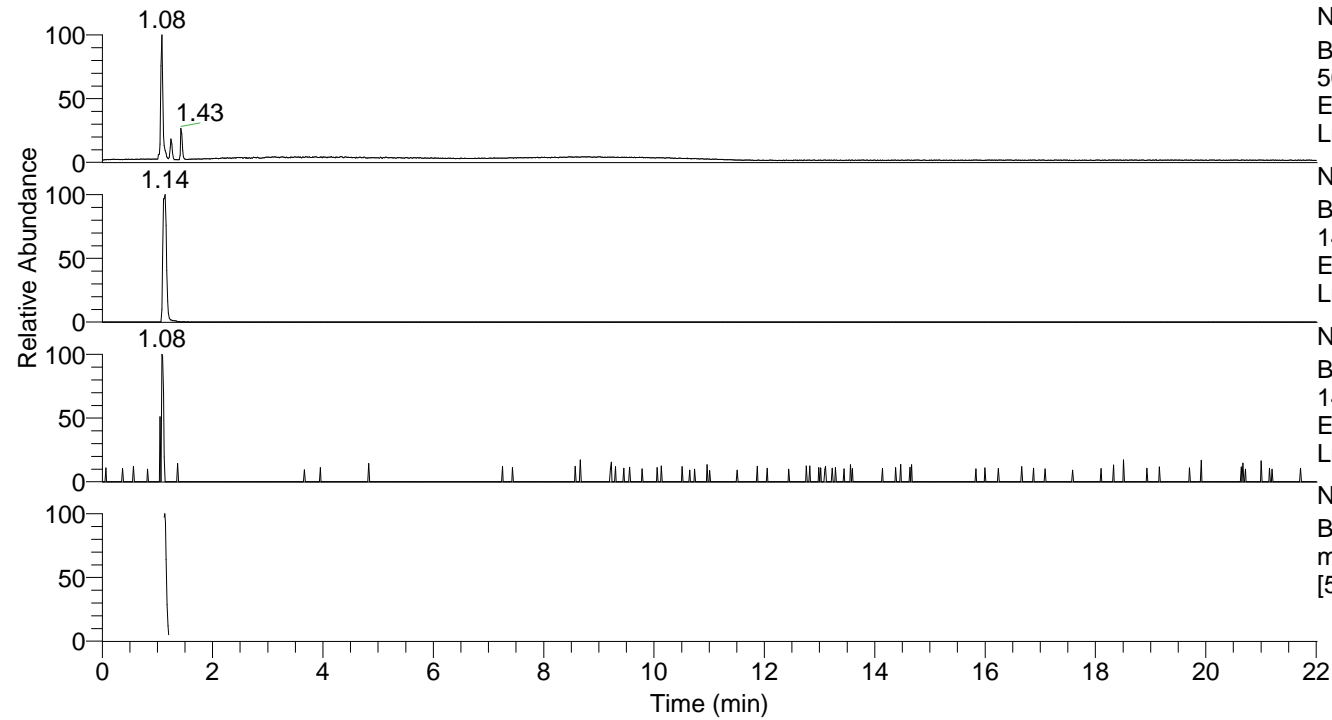


RT: 0.00 - 22.02



NL: 1.77E7
 Base Peak m/z=
 50.00000-1500.00000 F: FTMS + p
 ESI Full ms [100.00-1500.00] MS
 Lmactans

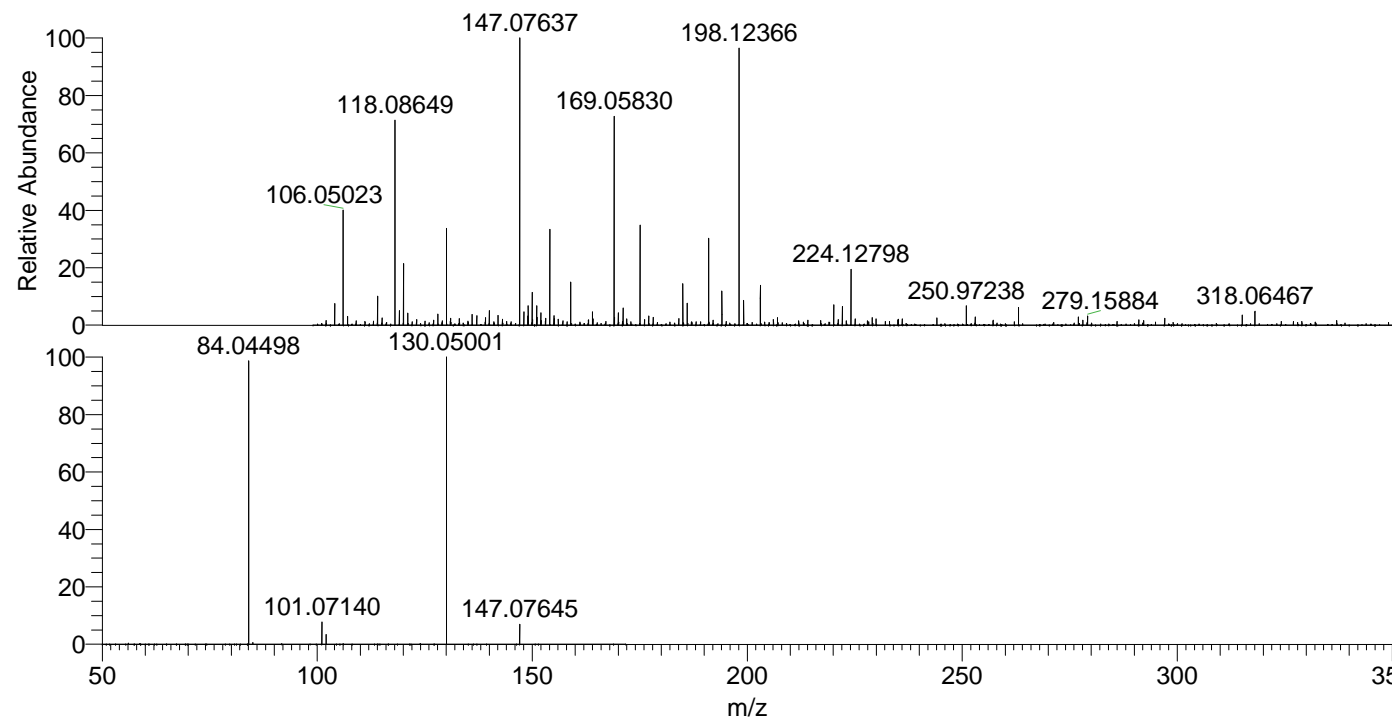
NL: 1.66E6
 Base Peak m/z=
 147.07623-147.07771 F: FTMS + p
 ESI Full ms [100.00-1500.00] MS
 Lmactans

NL: 9.79E3
 Base Peak m/z=
 147.11261-147.11409 F: FTMS + p
 ESI Full ms [100.00-1500.00] MS
 Lmactans

NL: 8.02E5
 Base Peak F: FTMS + p ESI d Full
 ms2 147.08@hcd35.00
 [50.00-170.00] MS Lmactans

Lmactans#443-477 RT: 1.12-1.21 AV: 7
 F: FTMS + p ESI d Full ms2 147.08 ...
 m/z= 50.00000-1000.00000

m/z	Intensity	Relative
84.04498	436819.8	98.63
85.02897	2625.9	0.59
101.07140	35048.5	7.91
102.05538	15119.0	3.41
130.05001	442892.8	100.00
147.07645	31025.2	7.01



NL: 1.66E6
 Lmactans#451 RT: 1.14
 AV: 1 T: FTMS + p ESI
 Full lock ms
 [100.00-1500.00]

NL: 4.42E5
 Lmactans#421-497 RT:
 1.12-1.21 AV: 7 F: FTMS
 + p ESI d Full ms2
 147.08@hcd35.00
 [50.00-170.00]