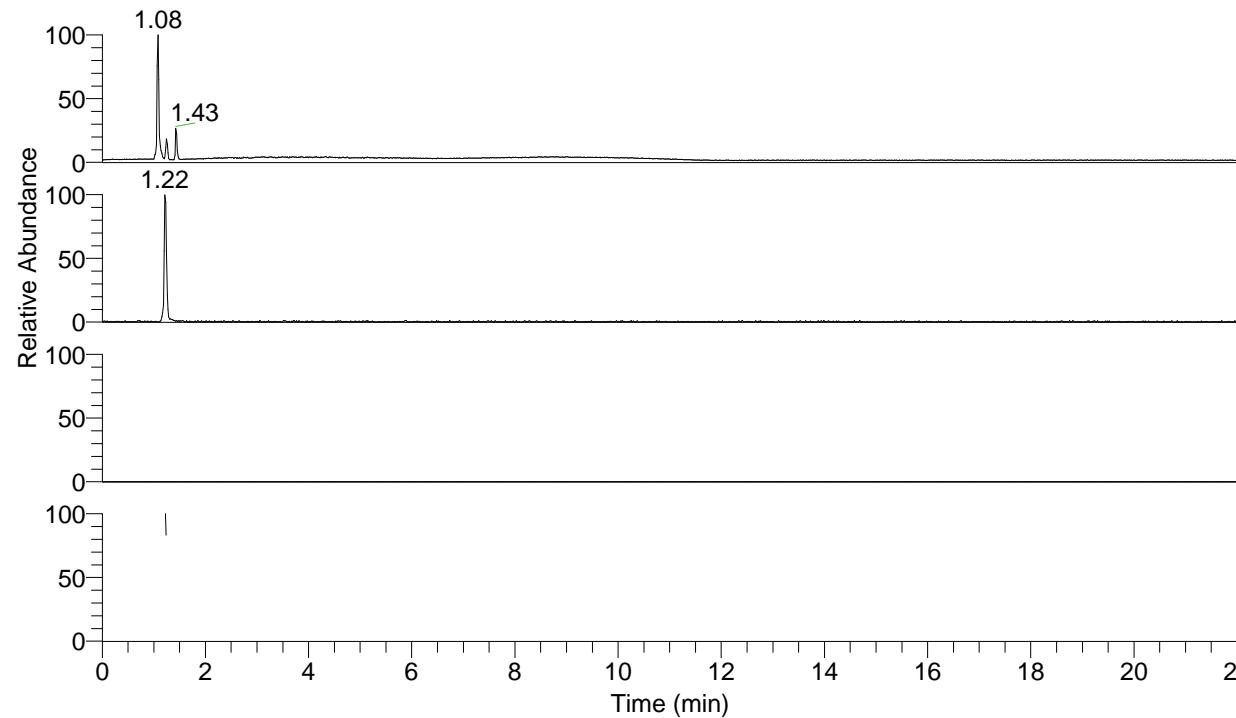


RT: 0.00 - 22.02



NL: 1.77E7
Base Peak m/z= 50.00000-1500.00000 F:
FTMS + p ESI Full ms [100.00-1500.00]
MS Lmactans

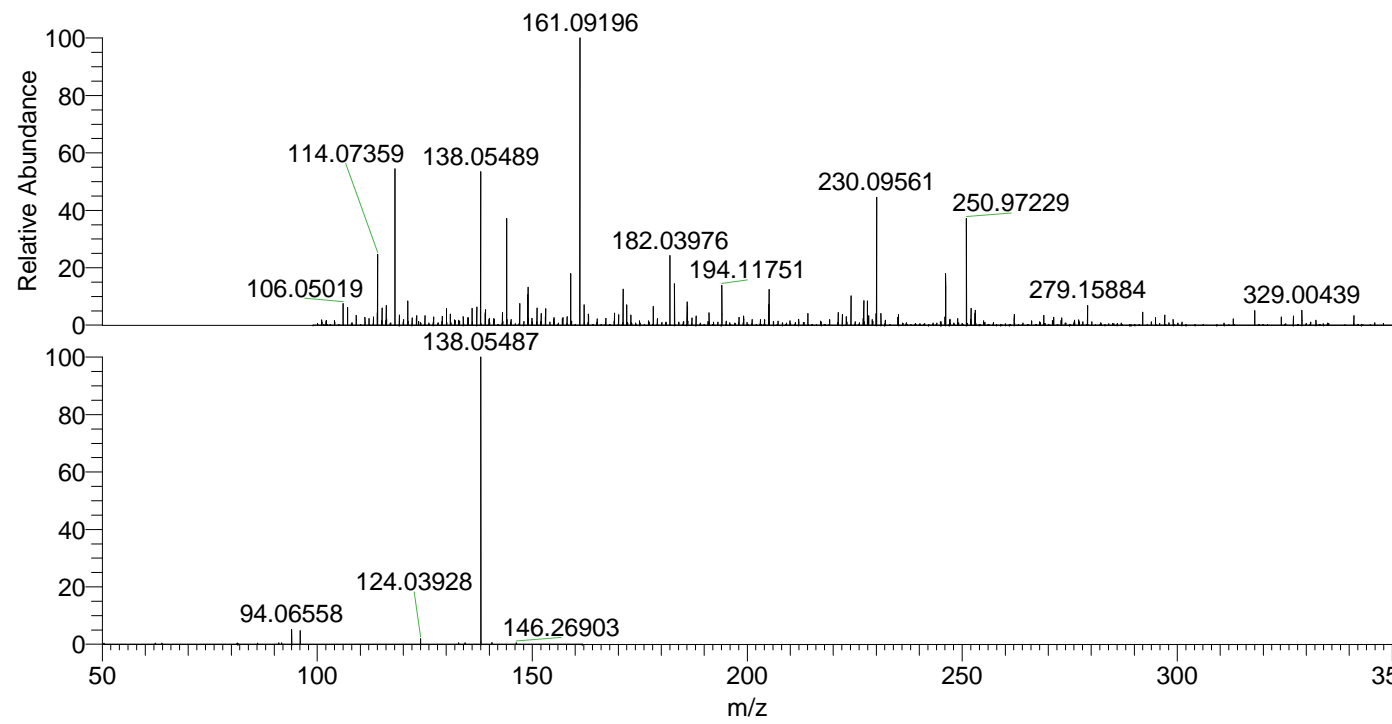
NL: 3.83E5
Base Peak m/z= 138.05481-138.05619 F:
FTMS + p ESI Full ms [100.00-1500.00]
MS Lmactans

NL: 0
Base Peak m/z= 275.10180-275.10456 F:
FTMS + p ESI Full ms [100.00-1500.00]
MS Lmactans

NL: 2.51E5
Base Peak m/z= 50.00000-1500.00000 F:
FTMS + p ESI d Full ms2
138.05@hcd35.00 [50.00-160.00] MS
Lmactans

Lmactans#484-489 RT: 1.22-1.24 AV: 2
F: FTMS + p ESI d Full ms2 138.05 ...
m/z= 50.00000-1000.00000

m/z	Intensity	Relative
91.75690	1233.9	0.57
94.06558	11251.1	5.16
96.04489	10403.6	4.77
124.03928	4253.6	1.95
132.86496	1183.8	0.54
134.40527	1150.6	0.53
138.05487	217910.5	100.00
140.64911	1279.6	0.59
146.26903	1183.8	0.54



NL: 6.90E5
Lmactans#481 RT: 1.22
AV: 1 T: FTMS + p ESI
Full lock ms
[100.00-1500.00]

NL: 2.16E5
Lmactans#452-551 RT:
1.22-1.24 AV: 2 F: FTMS
+ p ESI d Full ms2
138.05@hcd35.00
[50.00-160.00]