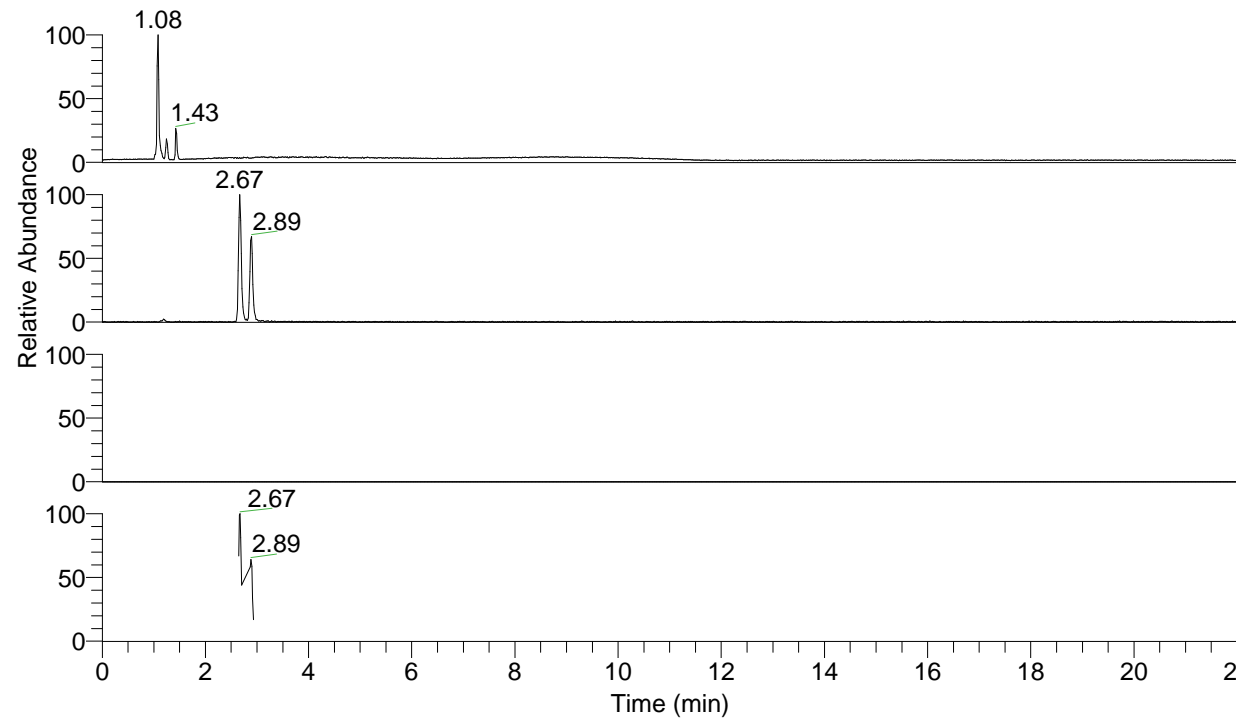


RT: 0.00 - 22.02



NL: 1.77E7
Base Peak m/z= 50.00000-1500.00000 F:
FTMS + p ESI Full ms [100.00-1500.00]
MS Lmactans

NL: 7.02E5
Base Peak m/z= 132.10179-132.10311 F:
FTMS + p ESI Full ms [100.00-1500.00]
MS Lmactans

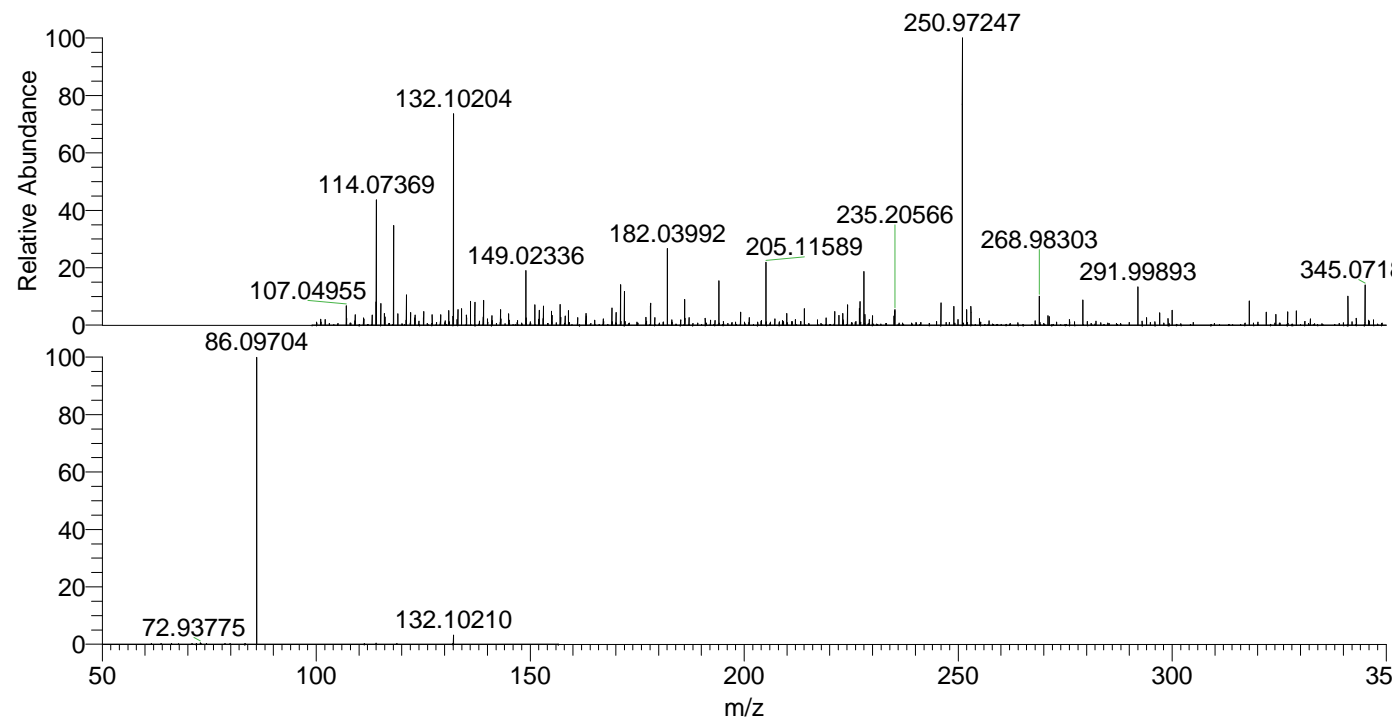
NL: 0
Base Peak m/z= 263.19576-263.19840 F:
FTMS + p ESI Full ms [100.00-1500.00]
MS Lmactans

NL: 5.26E5
Base Peak m/z= 50.00000-1500.00000 F:
FTMS + p ESI d Full ms2
132.10@hcd35.00 [50.00-155.00] MS
Lmactans

Lmactans#1139-1150 RT: 2.87-2.90 AV: 3

F: FTMS + p ESI d Full ms2 132.10 ...

m/z	Intensity	Relative
86.09704	301310.4	100.00
132.10210	9291.7	3.08



NL: 6.15E5
Lmactans#1147 RT: 2.89
AV: 1 T: FTMS + p ESI
Full lock ms
[100.00-1500.00]

NL: 2.95E5
Lmactans#1137-1155
RT: 2.87-2.90 AV: 3 F:
FTMS + p ESI d Full ms2
132.10@hcd35.00
[50.00-155.00]