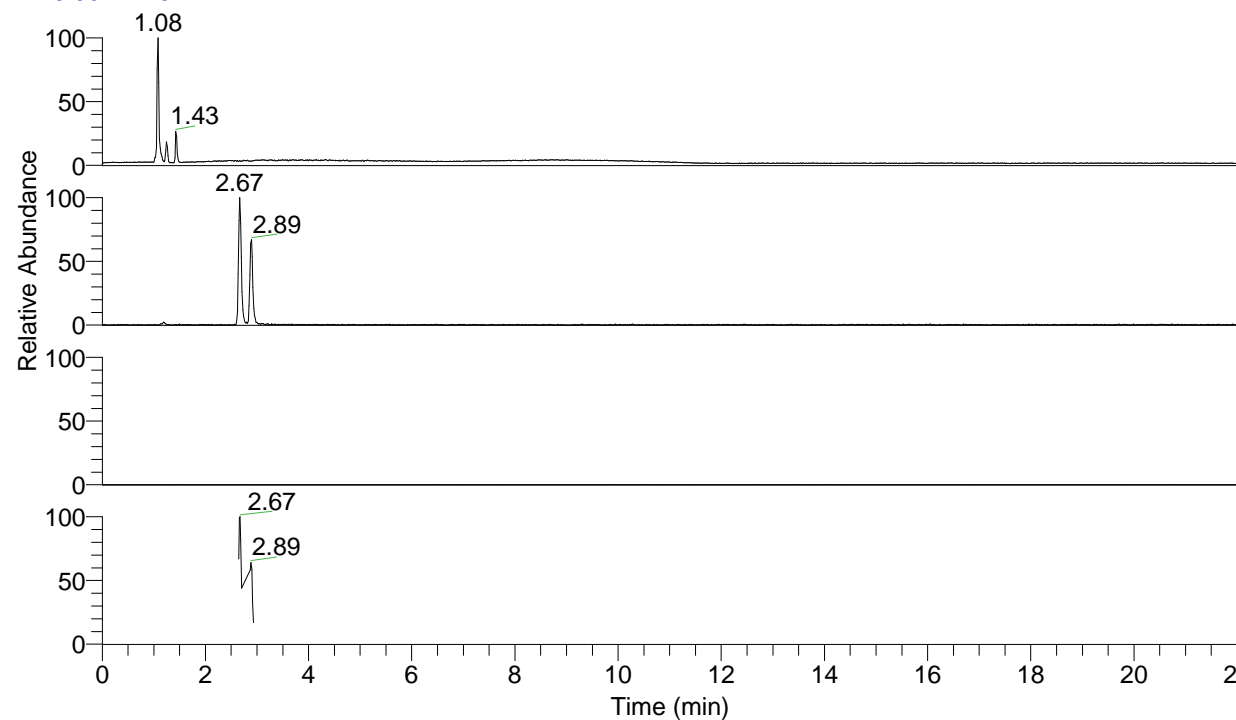


RT: 0.00 - 22.02



NL: 1.77E7  
Base Peak m/z= 50.00000-1500.00000 F:  
FTMS + p ESI Full ms [100.00-1500.00]  
MS Lmactans

NL: 7.02E5  
Base Peak m/z= 132.10179-132.10311 F:  
FTMS + p ESI Full ms [100.00-1500.00]  
MS Lmactans

NL: 0  
Base Peak m/z= 263.19576-263.19840 F:  
FTMS + p ESI Full ms [100.00-1500.00]  
MS Lmactans

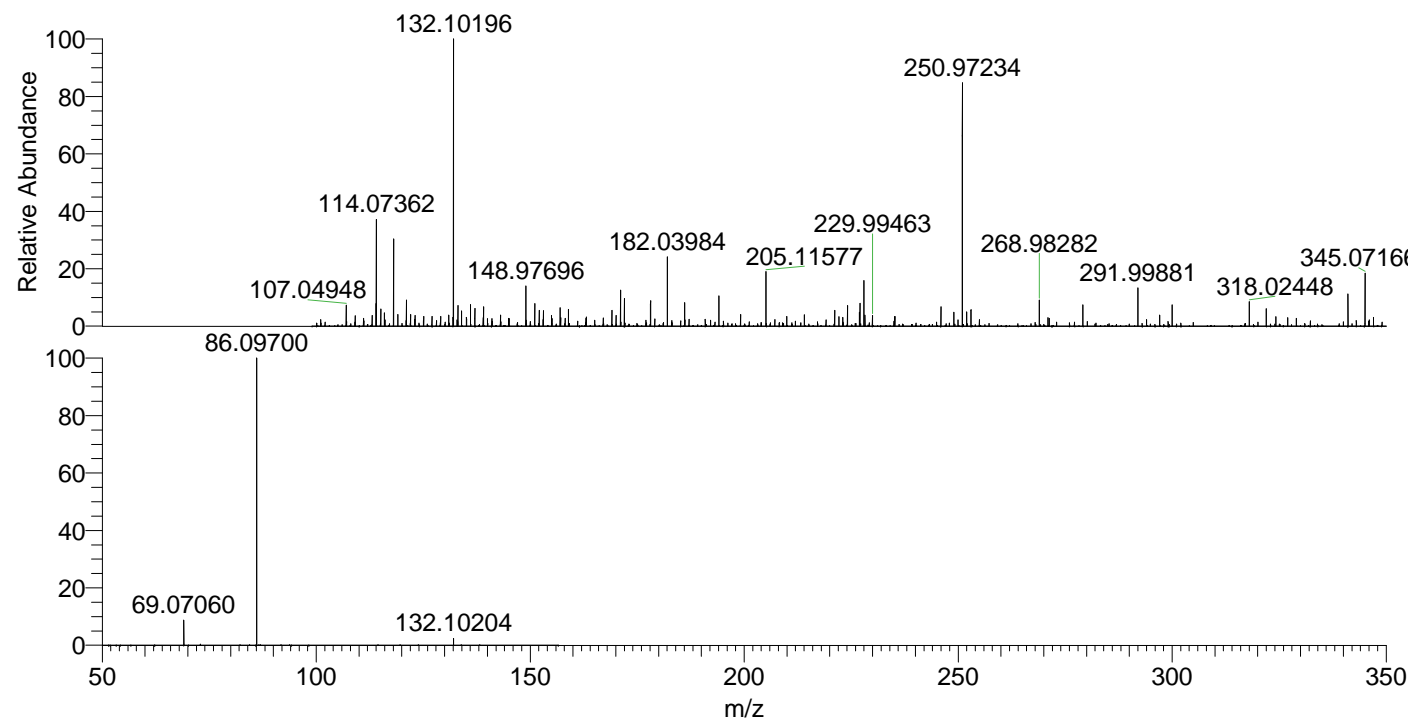
NL: 5.26E5  
Base Peak m/z= 50.00000-1500.00000 F:  
FTMS + p ESI d Full ms2  
132.10@hcd35.00 [50.00-155.00] MS  
Lmactans

Lmactans#1048-1070 RT: 2.64-2.70 AV: 5

F: FTMS + p ESI d Full ms2 132.10 ...

m/z= 50.00000-1000.00000

m/z	Intensity	Relative
69.07060	33208.3	8.61
86.09700	385712.8	100.00
132.10204	9196.9	2.38



NL: 6.81E5  
Lmactans#1057 RT: 2.67  
AV: 1 T: FTMS + p ESI  
Full lock ms  
[100.00-1500.00]

NL: 3.75E5  
Lmactans#1046-1070  
RT: 2.64-2.70 AV: 5 F:  
FTMS + p ESI d Full ms2  
132.10@hcd35.00  
[50.00-155.00]