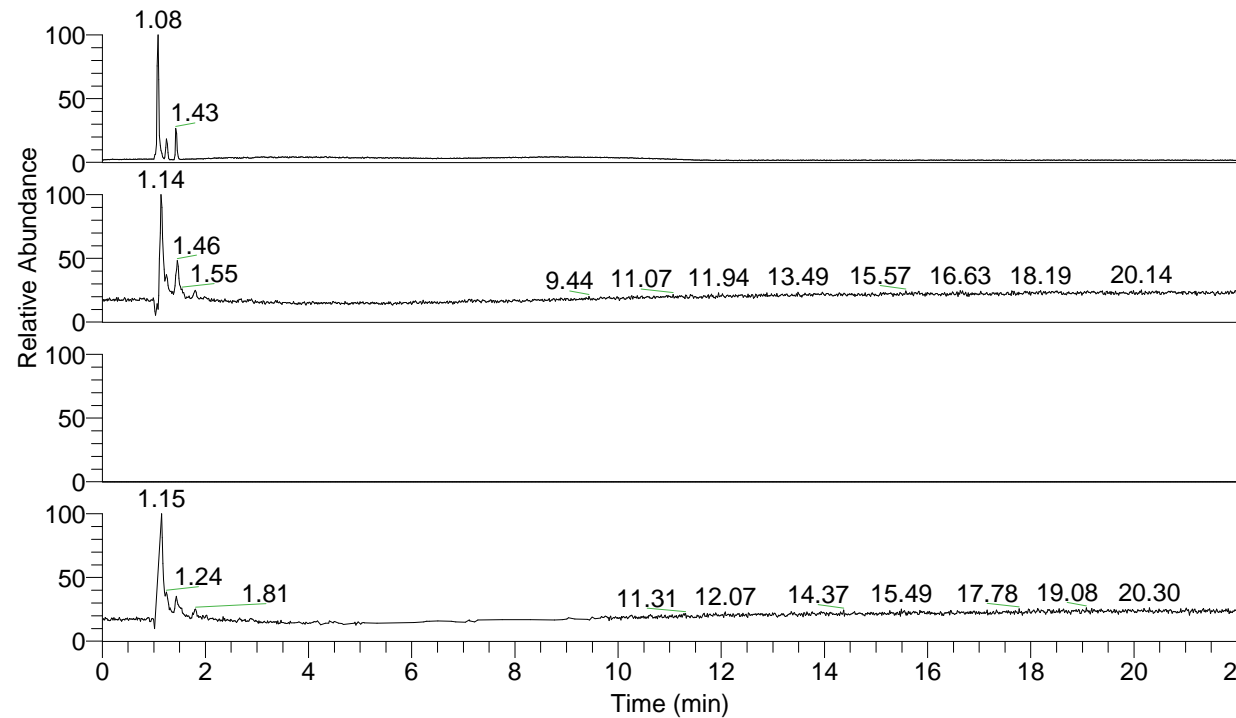


RT: 0.00 - 22.02



NL: 1.77E7
Base Peak m/z= 50.00000-1500.00000 F:
FTMS + p ESI Full ms [100.00-1500.00]
MS Lmactans

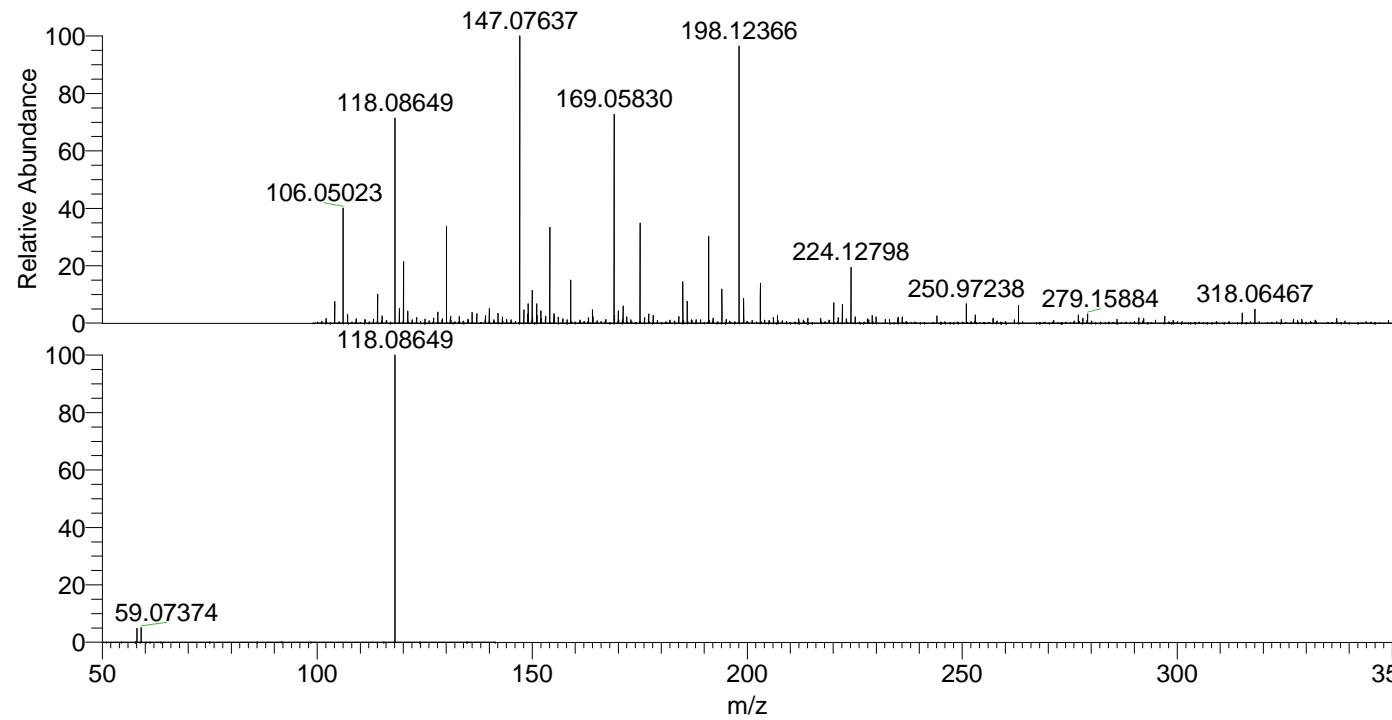
NL: 1.18E6
Base Peak m/z= 118.08621-118.08739 F:
FTMS + p ESI Full ms [100.00-1500.00]
MS Lmactans

NL: 0
Base Peak m/z= 235.16460-235.16696 F:
FTMS + p ESI Full ms [100.00-1500.00]
MS Lmactans

NL: 1.21E6
Base Peak m/z= 50.00000-1500.00000 F:
FTMS + p ESI d Full ms2
118.09@hcd35.00 [50.00-140.00] MS
Lmactans

Lmactans#455-470 RT: 1.15-1.19 AV: 4
F: FTMS + p ESI d Full ms2 118.09 ...
m/z= 50.00000-1000.00000

m/z	Intensity	Relative
58.06592	39330.8	4.80
59.07375	42855.8	5.23
118.08650	819192.7	100.00



NL: 1.66E6
Lmactans#451 RT: 1.14
AV: 1 T: FTMS + p ESI
Full lock ms
[100.00-1500.00]

NL: 8.96E5
Lmactans#428-469 RT:
1.15-1.18 AV: 3 F: FTMS
+ p ESI d Full ms2
118.09@hcd35.00
[50.00-140.00]