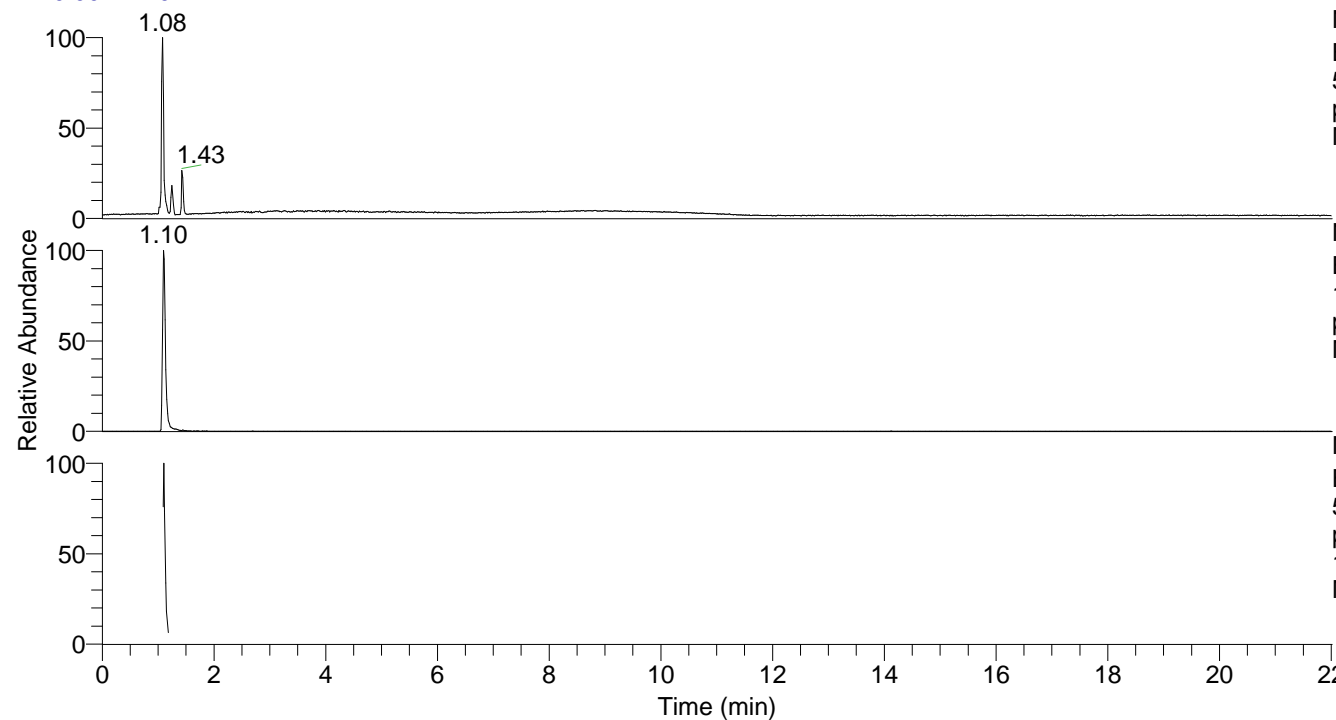


RT: 0.00 - 22.02



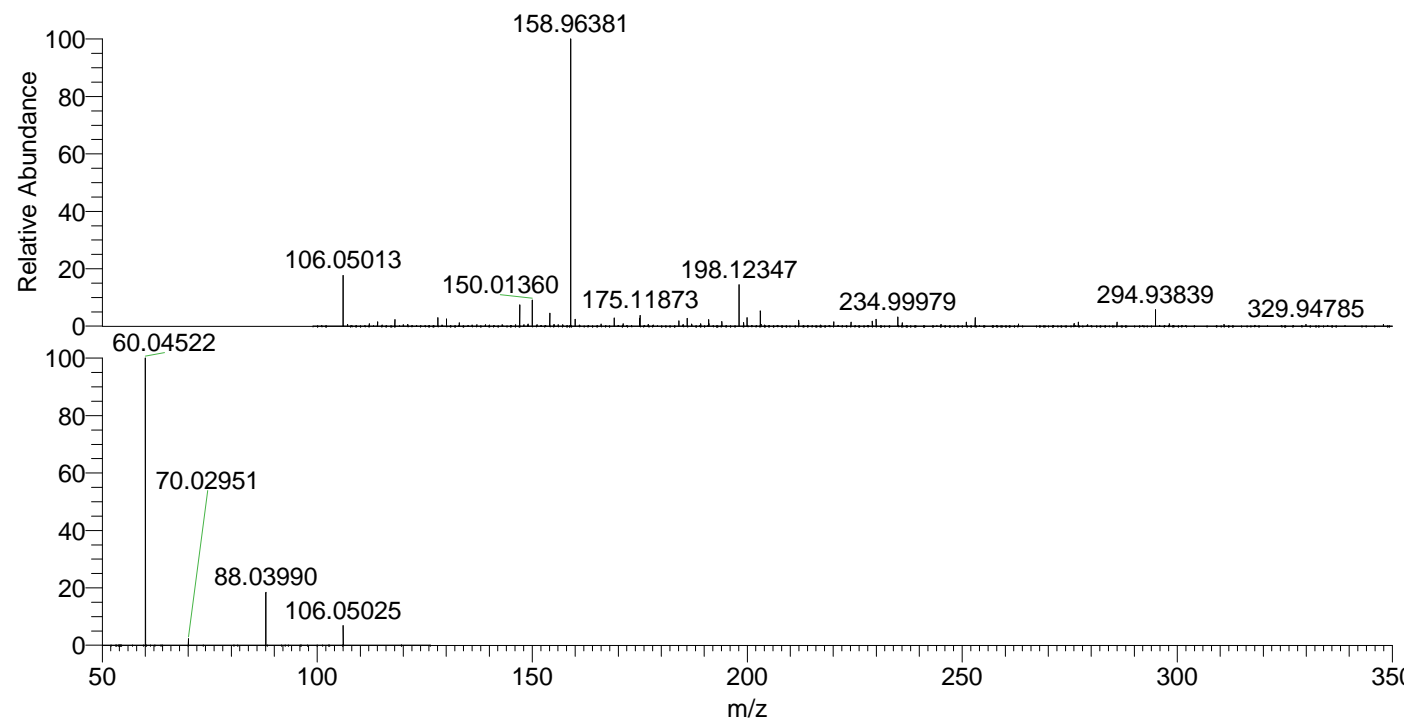
NL: 1.77E7  
Base Peak m/z=  
50.00000-1500.00000 F: FTMS +  
p ESI Full ms [100.00-1500.00]  
MS Lmactans

Lmactans#431-468 RT: 1.09-1.18 AV: 6  
F: FTMS + p ESI d Full ms2 106.05@h ...  
m/z= 50.00000-1000.00000

m/z	Intensity	Relative
60.04522	1217132.1	100.00
70.02951	26958.9	2.21
88.03990	225183.0	18.50
106.05025	80688.0	6.63

NL: 2.05E6  
Base Peak m/z=  
106.04989-106.05095 F: FTMS +  
p ESI Full ms [100.00-1500.00]  
MS Lmactans

NL: 2.46E6  
Base Peak m/z=  
50.00000-1500.00000 F: FTMS +  
p ESI d Full ms2  
106.05@hcd35.00 [50.00-125.00]  
MS Lmactans



NL: 1.12E7  
Lmactans#433 RT: 1.10  
AV: 1 T: FTMS + p ESI  
Full lock ms  
[100.00-1500.00]

NL: 1.18E6  
Lmactans#339-527 RT:  
1.09-1.18 AV: 6 F: FTMS  
+ p ESI d Full ms2  
106.05@hcd35.00  
[50.00-125.00]