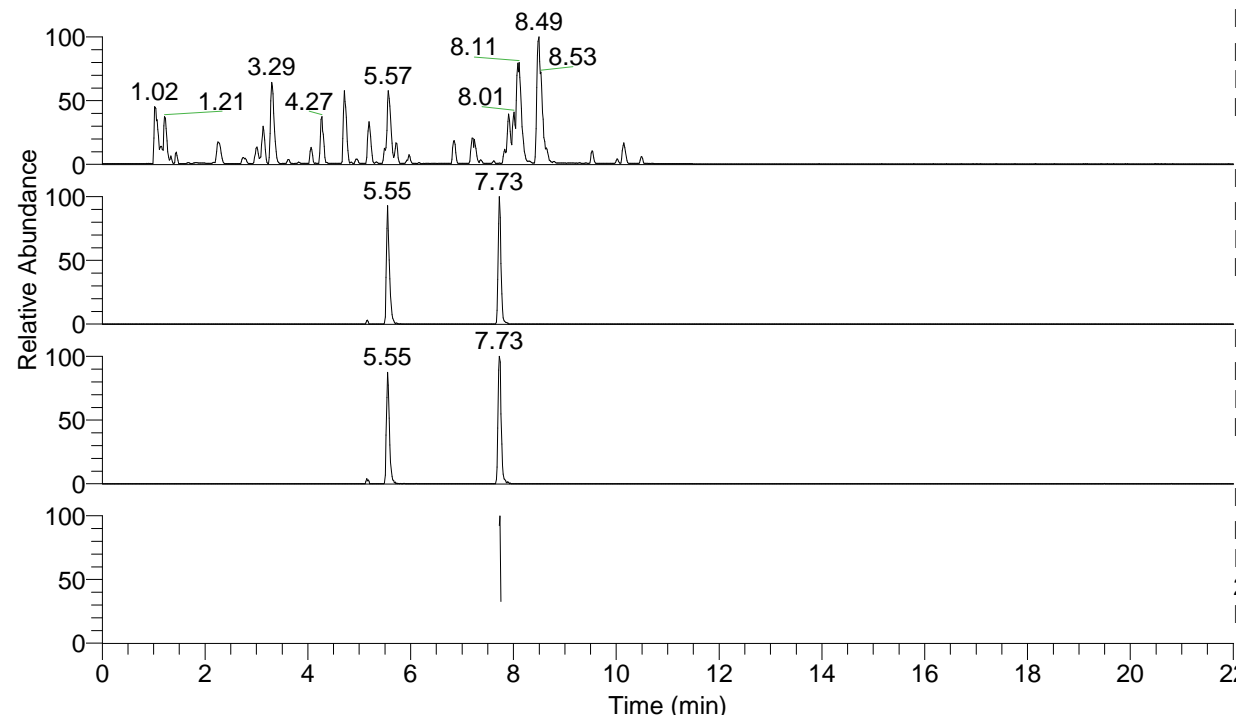


RT: 0.00 - 22.01



NL: 6.76E7
 Base Peak m/z= 100.00000-1500.00000 F:
 FTMS + p ESI Full ms [100.00-1500.00]
 MS Lcornutus

NL: 6.16E5
 Base Peak m/z= 547.36929-547.37477 F:
 FTMS + p ESI Full ms [100.00-1500.00]
 MS Lcornutus

NL: 3.34E5
 Base Peak m/z= 274.18856-274.19130 F:
 FTMS + p ESI Full ms [100.00-1500.00]
 MS Lcornutus

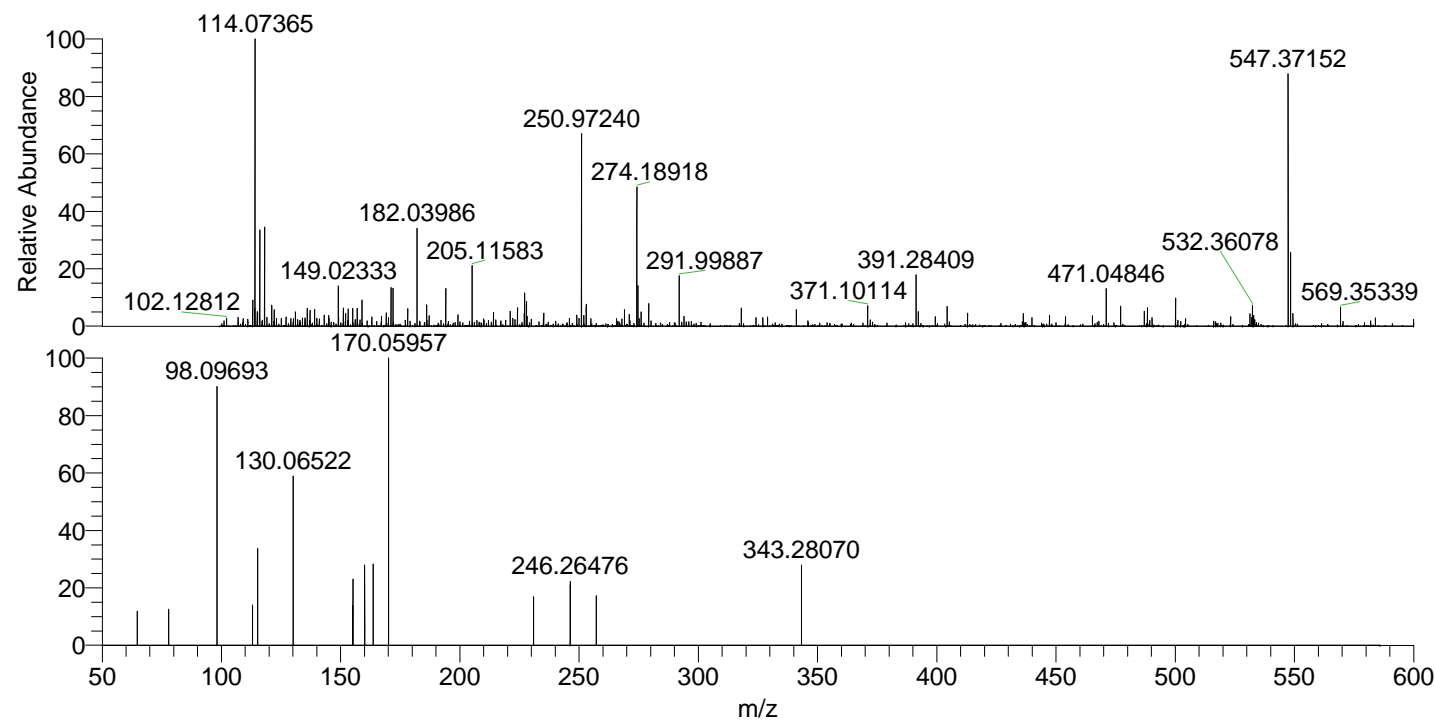
NL: 2.30E4
 Base Peak m/z= 50.00000-1500.00000 F:
 FTMS + p ESI d Full ms2
 274.19@hcd35.00 [50.00-580.00] MS
 Lcornutus

Lcornutus#3084 RT: 7.74

F: FTMS + p ESI d Full ms2 274.19 ...

m/z= 50.00000-1000.00000

m/z	Intensity	Relative
64.65861	2664.9	11.57
77.81957	2805.9	12.18
98.09693	20104.4	87.28
112.97543	3199.6	13.89
115.12317	7613.3	33.05
130.06522	13111.2	56.92
155.08110	3089.1	13.41
155.11821	5233.9	22.72
160.07594	6290.7	27.31
163.63123	6539.9	28.39
170.05957	23034.9	100.00
230.88019	3767.6	16.36
246.26476	5074.6	22.03
257.16571	3844.7	16.69
343.28070	6413.7	27.84



NL: 6.75E5
 Lcornutus#3079 RT:
 7.73 AV: 1 T: FTMS +
 p ESI Full lock ms
 [100.00-1500.00]

NL: 2.22E4
 Lcornutus#3079 RT:
 7.74 AV: 1 F: FTMS +
 p ESI d Full ms2
 274.19@hcd35.00
 [50.00-580.00]