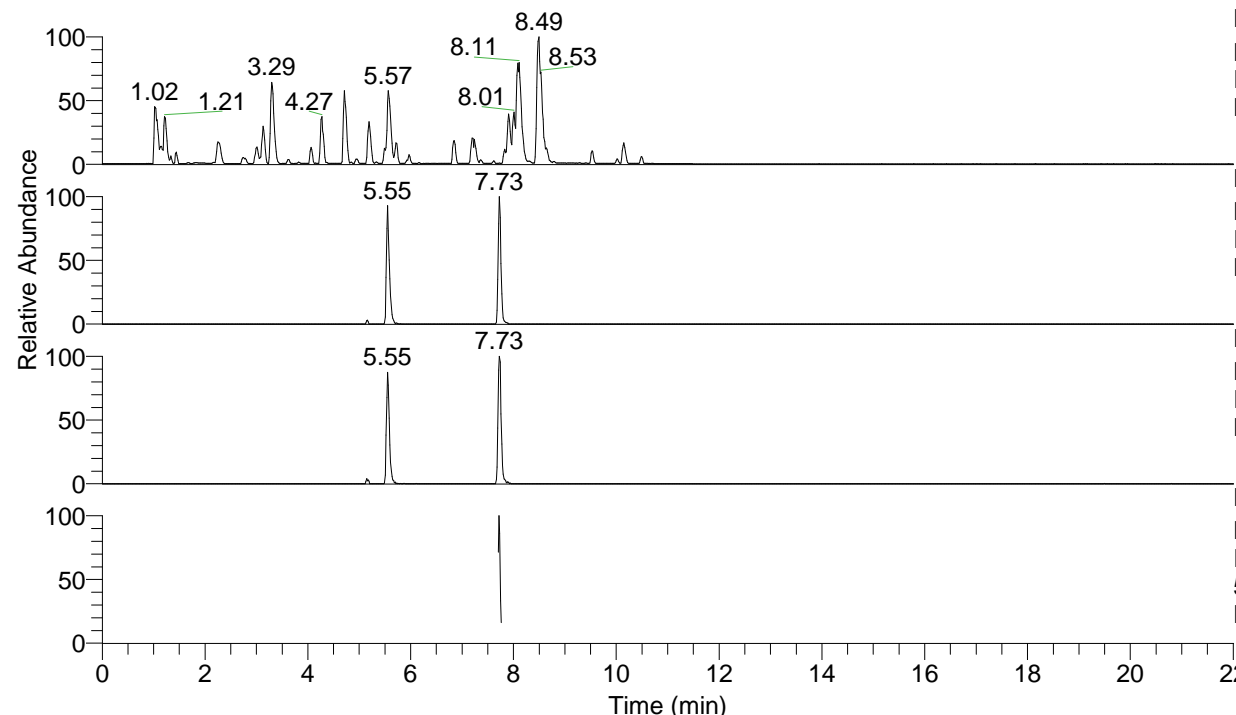


RT: 0.00 - 22.01



NL: 6.76E7
 Base Peak m/z= 100.00000-1500.00000 F:
 FTMS + p ESI Full ms [100.00-1500.00]
 MS Lcornutus

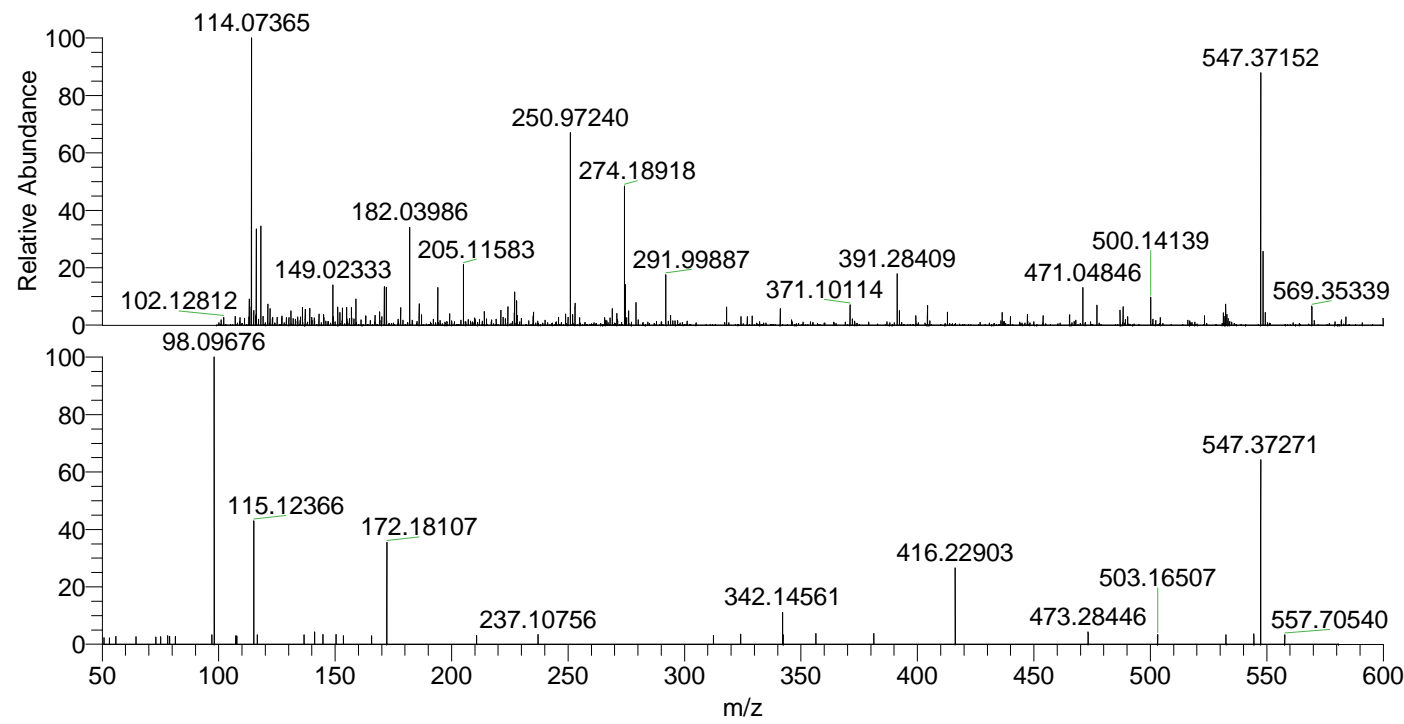
NL: 6.16E5
 Base Peak m/z= 547.36929-547.37477 F:
 FTMS + p ESI Full ms [100.00-1500.00]
 MS Lcornutus

NL: 3.34E5
 Base Peak m/z= 274.18856-274.19130 F:
 FTMS + p ESI Full ms [100.00-1500.00]
 MS Lcornutus

NL: 6.03E4
 Base Peak m/z= 50.00000-1500.00000 F:
 FTMS + p ESI d Full ms2
 547.37@hcd35.00 [50.00-575.00] MS
 Lcornutus

Lcornutus#3072-3081 RT: 7.71-7.73 AV:
 F: FTMS + p ESI d Full ms2 547.37 ...
 m/z= 50.00000-1000.00000

m/z	Intensity	Relative
50.72205	1138.4	2.31
53.09480	1084.8	2.21
55.80169	1371.6	2.79
64.52887	1269.6	2.58
72.98572	1249.6	2.54
75.05351	1325.6	2.69
78.05873	1443.8	2.94
78.94730	1374.2	2.79
81.38981	1341.1	2.73
97.12065	1644.1	3.34
98.09676	49188.1	100.00
98.10191	1204.8	2.45
107.43790	1471.5	2.99
107.55975	1416.4	2.88
107.80008	1419.4	2.89
115.01375	1538.6	3.13
115.12366	21852.7	44.43
116.52485	1649.0	3.35
136.59937	1636.1	3.33
141.19322	2126.6	4.32
144.75365	1682.9	3.42
150.42205	1678.8	3.41
153.51185	1472.7	2.99
165.60204	1453.7	2.96
172.18107	17696.8	35.98
210.76591	1535.0	3.12
237.10756	1669.2	3.39
312.41510	1520.6	3.09
324.13690	1749.7	3.56
342.14561	5602.9	11.39
342.42935	1624.5	3.30
356.39210	1861.2	3.78
381.29567	1830.4	3.72
416.22903	13165.6	26.77
473.28446	2098.9	4.27
503.16507	1719.2	3.50
532.47280	1672.9	3.40
544.44331	1831.8	3.72
547.37271	32235.2	65.53
557.70540	1630.2	3.31



NL: 6.75E5
 Lcornutus#3079 RT: 7.73
 AV: 1 T: FTMS + p ESI
 Full lock ms
 [100.00-1500.00]

NL: 4.91E4
 Lcornutus#3068-3085 RT:
 7.71-7.73 AV: 3 F: FTMS
 + p ESI d Full ms2
 547.37@hcd35.00
 [50.00-575.00]