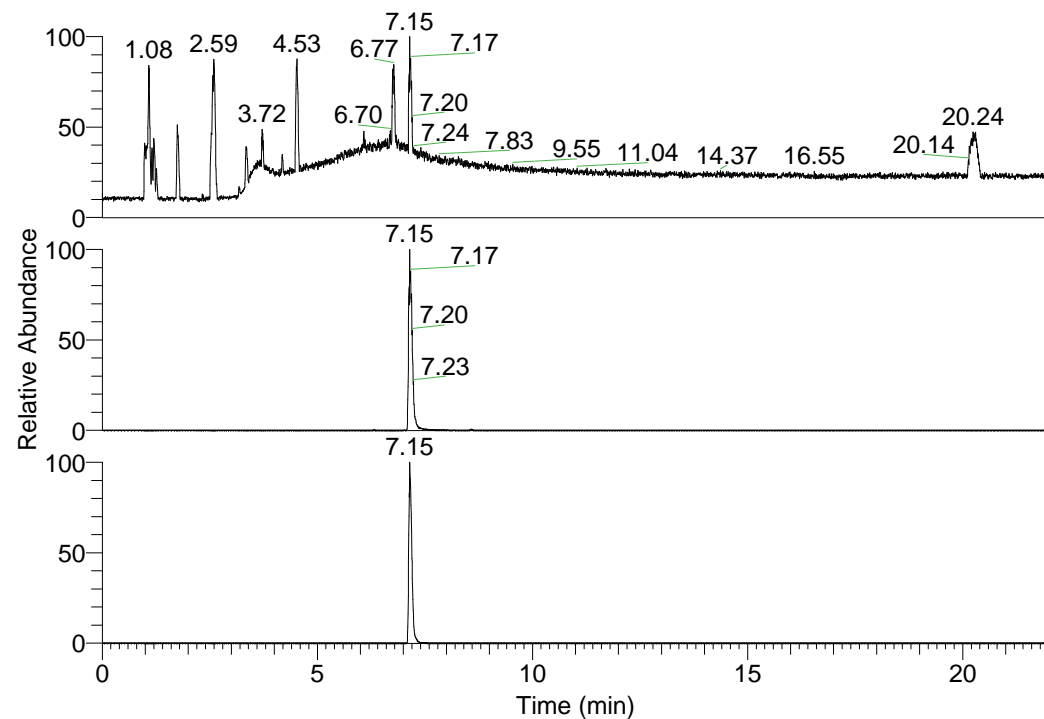


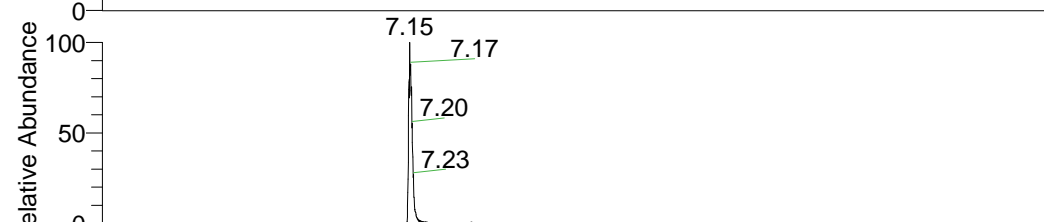
RT: 0.00 - 22.01



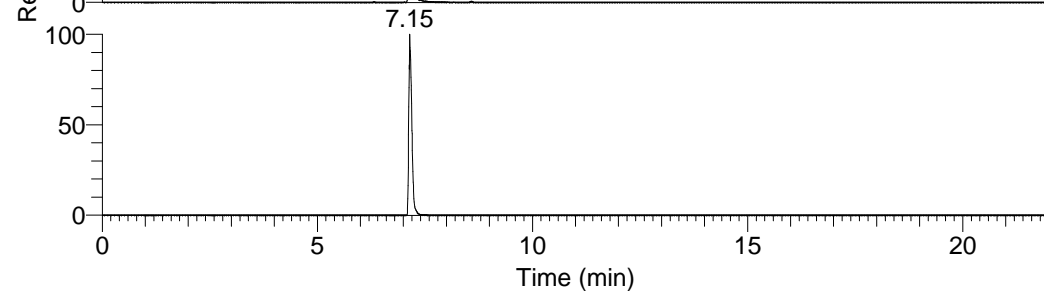
NL: 6.93E7
 Base Peak m/z=
 100.00000-1500.00000 F:
 FTMS + p ESI Full ms
 [100.00-1500.00] MS
 Lcornutus_HDX

Lcornutus_HDX#1140 RT: 7.15
 T: FTMS + p ESI Full ms [100.00-1500.00]
 m/z= 529.00000-530.00000

m/z	Intensity	Relative	Delta (ppm)	Composition
529.41400	69305704.0	100.00	0.05	C ₂₆ H ₃₃ ² H ₁₁ O ₄ N ₇
			-2.87	C ₂₆ H ₃₅ ² H ₁₀ O ₄ N ₇
			2.98	C ₂₆ H ₃₁ ² H ₁₂ O ₄ N ₇

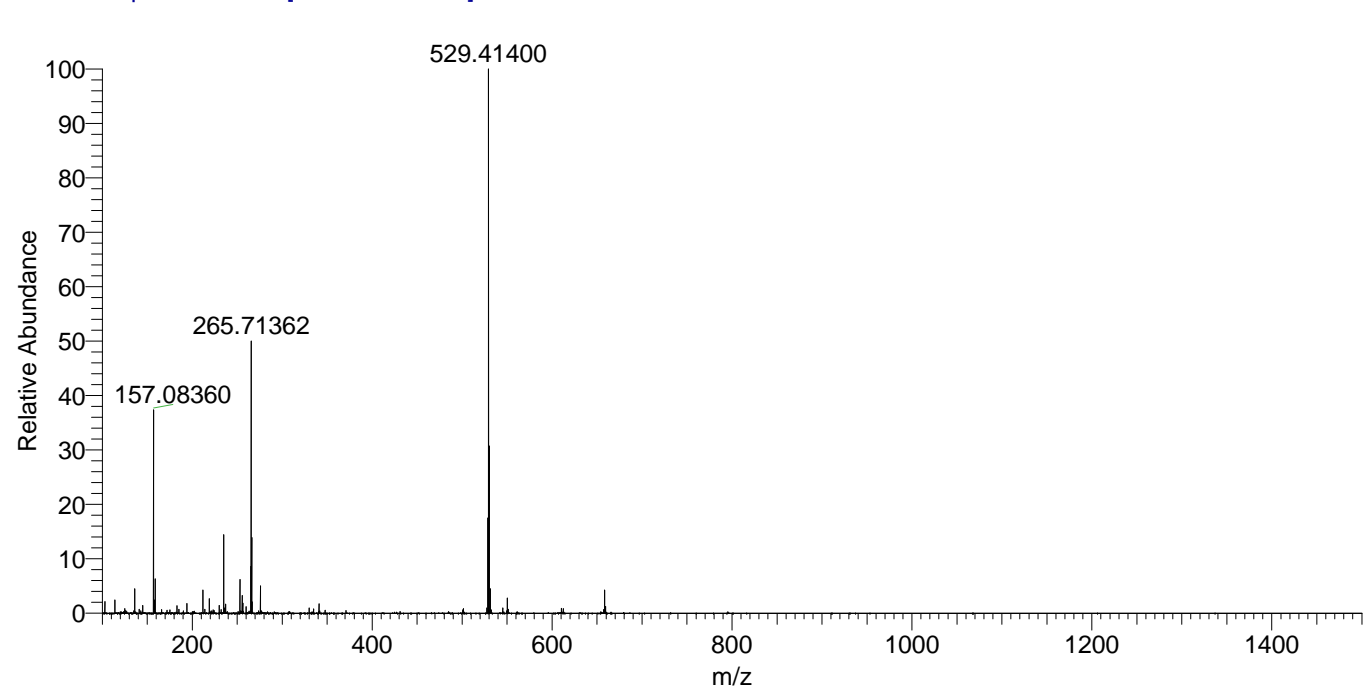


NL: 6.93E7
 Base Peak m/z=
 529.41187-529.41717 F:
 FTMS + p ESI Full ms
 [100.00-1500.00] MS
 Lcornutus_HDX



NL: 3.36E7
 Base Peak m/z=
 265.71298-265.71564 F:
 FTMS + p ESI Full ms
 [100.00-1500.00] MS
 Lcornutus_HDX

Lcornutus_HDX #1140 RT: 7.15 AV: 1 NL: 6.50E7
 T: FTMS + p ESI Full ms [100.00-1500.00]



Lcornutus_HDX #1140 RT: 7.15 AV: 1 NL: 6.50E7
 T: FTMS + p ESI Full ms [100.00-1500.00]

