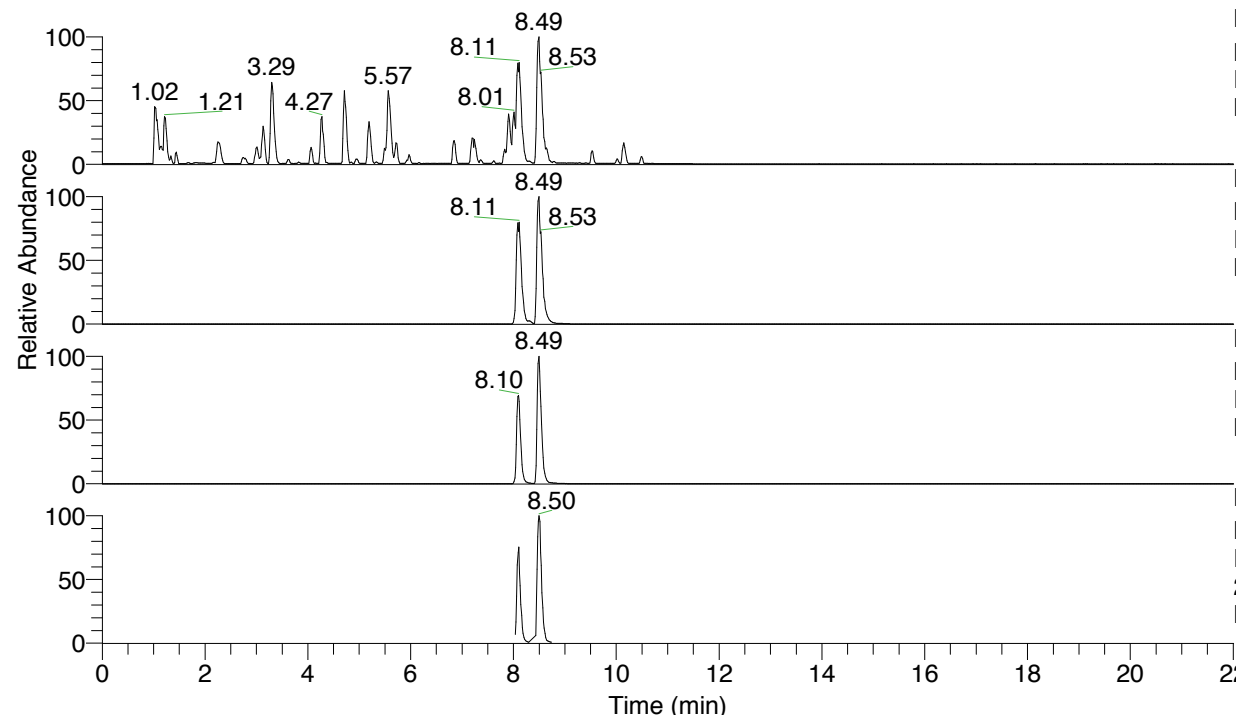


RT: 0.00 - 22.01



NL: 6.76E7
 Base Peak m/z= 100.00000-1500.00000 F:
 FTMS + p ESI Full ms [100.00-1500.00]
 MS Lcornutus

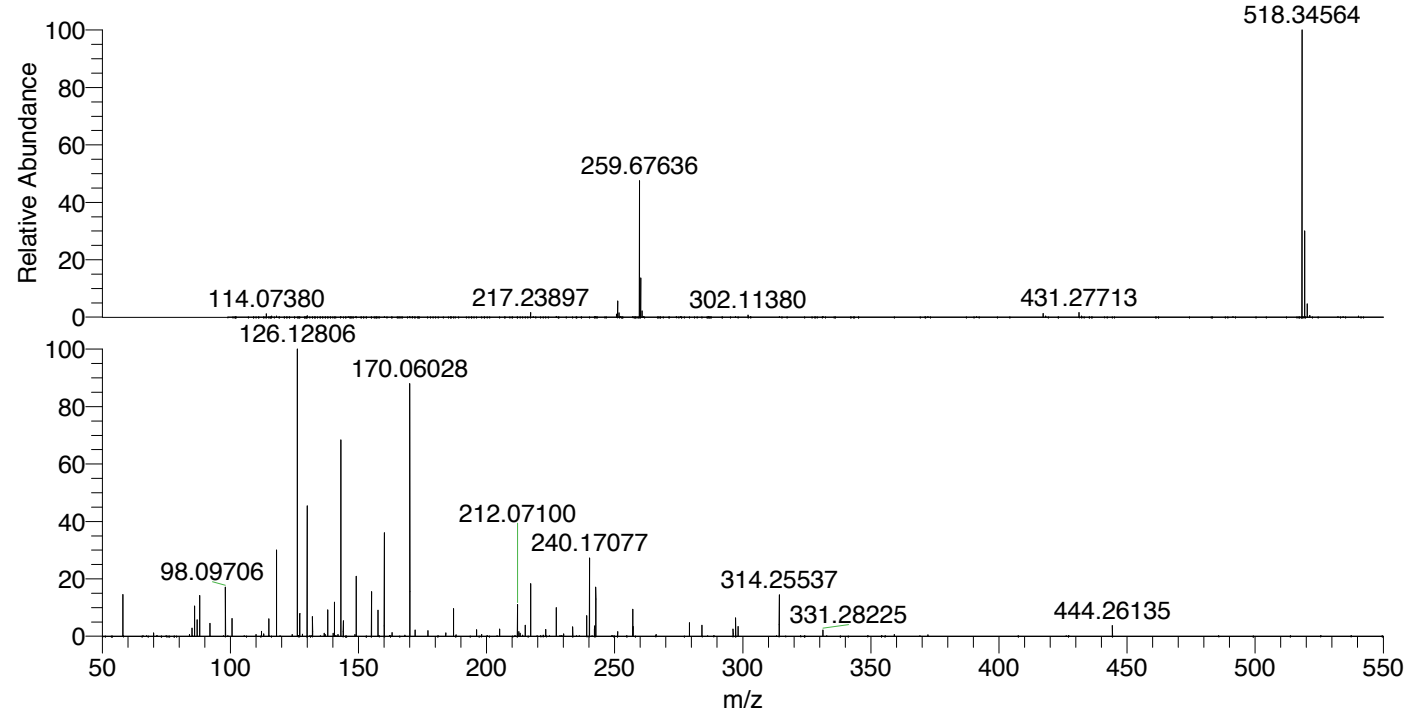
NL: 6.76E7
 Base Peak m/z= 518.34289-518.34807 F:
 FTMS + p ESI Full ms [100.00-1500.00]
 MS Lcornutus

NL: 3.23E7
 Base Peak m/z= 259.67535-259.67795 F:
 FTMS + p ESI Full ms [100.00-1500.00]
 MS Lcornutus

NL: 3.11E6
 Base Peak m/z= 50.00000-1500.00000 F:
 FTMS + p ESI d Full ms2
 259.68@hcd35.00 [50.00-550.00] MS
 Lcornutus

Lcornutus#3375-3417 RT: 8.46-8.55 AV: 8
 F: FTMS + p ESI d Full ms2 259.68@h ...
 m/z= 50.00000-1000.00000

m/z	Intensity	Relative
58.06607	313899.8	14.19
85.07680	62656.5	2.83
86.09719	237073.5	10.72
87.05609	129305.3	5.85
88.04006	320588.4	14.50
92.09707	103901.7	4.70
98.09710	386548.9	17.48
100.61030	132326.0	5.98
112.11263	36443.4	1.65
115.05052	132284.3	5.98
118.06551	668543.1	30.23
126.12806	2211600.0	100.00
127.08697	178622.1	8.08
130.06542	1012569.5	45.78
132.08104	146871.4	6.64
136.62626	24596.1	1.11
138.05517	206197.7	9.32
140.60487	253075.2	11.44
143.15450	1484894.9	67.14
144.08112	120834.5	5.46
149.11821	467279.7	21.13
155.08176	355342.9	16.07
157.63124	199149.6	9.00
160.07588	815882.9	36.89
160.18103	186669.0	8.44
163.11568	26672.9	1.21
170.06027	1917334.5	86.69
172.10882	46572.0	2.11
177.11328	43679.4	1.98
184.07606	26439.6	1.20
187.08688	209575.1	9.48
196.07621	50623.8	2.29
205.11601	51637.5	2.33
212.07100	245081.4	11.08
212.63913	35821.3	1.62
215.08199	84929.2	3.84
217.23899	401845.1	18.17
223.14436	54227.0	2.45
227.22326	219100.4	9.91
233.64482	71715.8	3.24
239.08213	158555.4	7.17
240.17076	596344.1	26.96
242.15766	79199.3	3.58
242.64987	362836.2	16.41
251.16321	37501.5	1.70
257.09206	216297.3	9.78
257.19769	75079.2	3.39
279.21801	102174.8	4.62
284.10333	83184.8	3.76
296.24520	51954.1	2.35
297.22938	134014.6	6.06
298.17629	78615.7	3.55
314.25541	319022.2	14.42
331.28217	45097.9	2.04
444.26096	82399.4	3.73



NL: 6.75E7
 Lcornutus#3391 RT: 8.49
 AV: 1 T: FTMS + p ESI
 Full ms [100.00-1500.00]

NL: 2.46E6
 Lcornutus#3375-3410 RT:
 8.46-8.53 AV: 6 F: FTMS
 + p ESI d Full ms2
 259.68@hcd35.00
 [50.00-550.00]

Lcornutus#3375-3417 RT: 8.46-8.55 AV: 8

F: FTMS + p ESI d Full ms2 259.68@hcd35.00 [50.00-550.00]

m/z= 50.00000-1000.00000

m/z	Intensity	Relative
58.06607	313899.8	14.19
70.02962	21177.8	0.96
84.08154	13690.9	0.62
85.07680	62656.5	2.83
86.09719	237073.5	10.72
87.05609	129305.3	5.85
88.04006	320588.4	14.50
92.09707	103901.7	4.70
98.09710	386548.9	17.48
100.61030	132326.0	5.98
110.02431	11904.8	0.54
112.11263	36443.4	1.65
113.07155	15227.7	0.69
115.05052	132284.3	5.98
118.06551	668543.1	30.23
124.11239	12270.5	0.55
126.12806	2211600.0	100.00
127.08697	178622.1	8.08
128.11297	12582.8	0.57
130.06542	1012569.5	45.78
132.08104	146871.4	6.64
136.62626	24596.1	1.11
137.07119	14084.8	0.64
138.05517	206197.7	9.32
140.11289	22561.0	1.02
140.60487	253075.2	11.44
142.06550	15495.4	0.70
143.15450	1484894.9	67.14
144.08112	120834.5	5.46
148.62622	11217.0	0.51
149.11821	467279.7	21.13
155.08176	355342.9	16.07
157.63124	199149.6	9.00
160.07588	815882.9	36.89
160.18103	186669.0	8.44
163.11568	26672.9	1.21
170.06027	1917334.5	86.69
172.10882	46572.0	2.11
177.11328	43679.4	1.98

Lcornutus#3375-3417 RT: 8.46-8.55 AV: 8

F: FTMS + p ESI d Full ms2 259.68@hcd35.00 [50.00-550.00]

m/z= 50.00000-1000.00000

m/z	Intensity	Relative
184.07606	26439.6	1.20
187.08688	209575.1	9.48
196.07621	50623.8	2.29
198.05505	12233.5	0.55
205.09807	22701.3	1.03
205.11601	51637.5	2.33
212.07100	245081.4	11.08
212.63913	35821.3	1.62
213.08767	19274.5	0.87
215.08199	84929.2	3.84
217.23899	401845.1	18.17
223.14436	54227.0	2.45
227.22326	219100.4	9.91
230.11434	17546.0	0.79
233.64482	71715.8	3.24
239.08213	158555.4	7.17
240.17076	596344.1	26.96
242.15766	79199.3	3.58
242.64987	362836.2	16.41
251.16321	37501.5	1.70
257.09206	216297.3	9.78
257.19769	75079.2	3.39
279.21801	102174.8	4.62
284.10333	83184.8	3.76
296.24520	51954.1	2.35
297.22938	134014.6	6.06
298.17629	78615.7	3.55
314.25541	319022.2	14.42
331.28217	45097.9	2.04
444.26096	82399.4	3.73