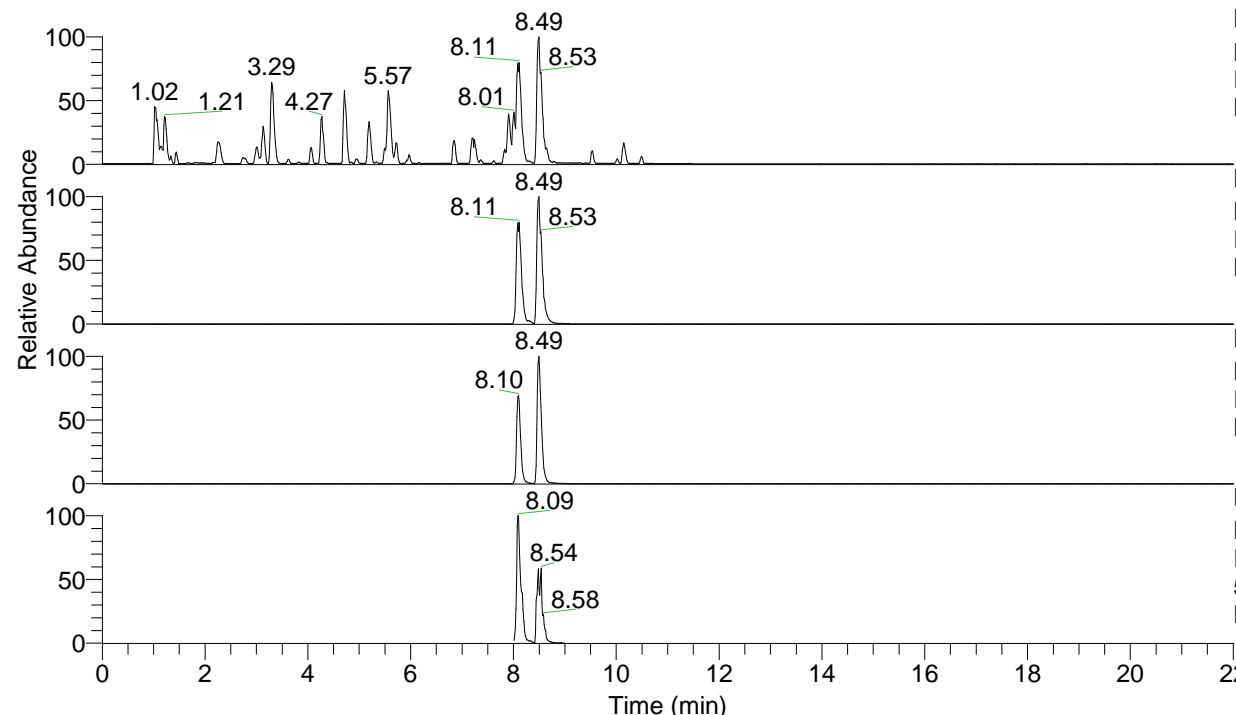


RT: 0.00 - 22.01



NL: 6.76E7  
 Base Peak m/z= 100.00000-1500.00000 F:  
 FTMS + p ESI Full ms [100.00-1500.00]  
 MS Lcornutus

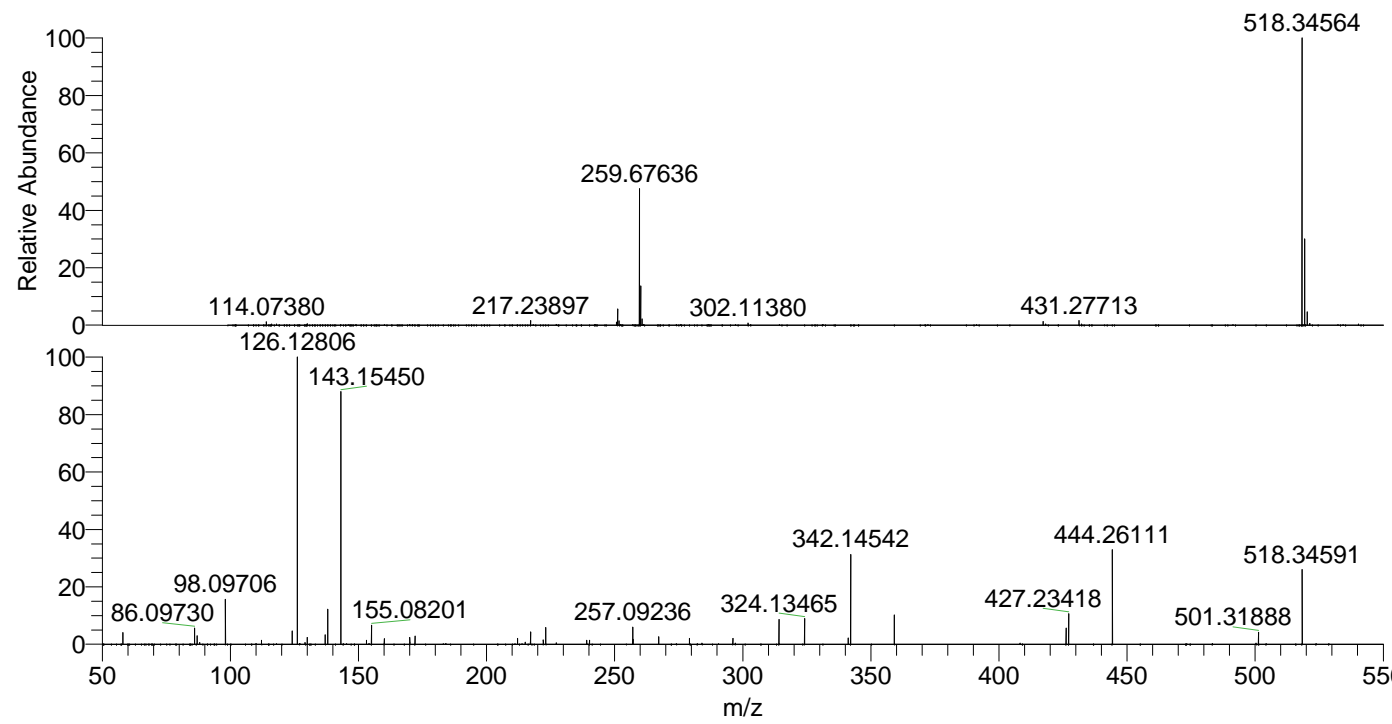
NL: 6.76E7  
 Base Peak m/z= 518.34289-518.34807 F:  
 FTMS + p ESI Full ms [100.00-1500.00]  
 MS Lcornutus

NL: 3.23E7  
 Base Peak m/z= 259.67535-259.67795 F:  
 FTMS + p ESI Full ms [100.00-1500.00]  
 MS Lcornutus

NL: 1.09E7  
 Base Peak m/z= 50.00000-1500.00000 F:  
 FTMS + p ESI d Full ms2  
 518.34@hcd35.00 [50.00-545.00] MS  
 Lcornutus

Lcornutus#3374-3416 RT: 8.46-8.55 AV: 8  
 F: FTMS + p ESI d Full ms2 518.34@h ...  
 m/z= 50.00000-1000.00000

m/z	Intensity	Relative
58.06604	192583.0	4.05
86.09730	272887.3	5.74
87.05605	142642.8	3.00
88.04011	31731.8	0.67
98.09706	763468.3	16.07
112.11262	67171.4	1.41
124.11254	216919.1	4.56
126.12806	4752071.0	100.00
129.13892	30726.0	0.65
130.06561	117949.9	2.48
137.07125	160832.3	3.38
138.05520	592646.9	12.47
143.15450	4167786.3	87.70
153.13889	64739.3	1.36
155.08201	319344.0	6.72
160.07603	94253.2	1.98
170.06047	111590.5	2.35
172.07625	64346.0	1.35
172.10857	134313.2	2.83
212.07086	97285.8	2.05
215.08238	37167.4	0.78
217.13432	25750.5	0.54
217.23921	206321.3	4.34
222.16034	71138.5	1.50
223.14478	284407.9	5.98
227.22391	24884.3	0.52
239.08223	63895.4	1.34
240.17124	68994.4	1.45
257.09236	287024.8	6.04
257.19751	82997.1	1.75
267.18207	123381.4	2.60
279.21847	99514.1	2.09
296.13933	100066.1	2.11
314.15047	414709.7	8.73
324.13465	423900.9	8.92
341.16124	105461.9	2.22
342.14542	1485148.5	31.25
359.17154	482952.3	10.16
426.25096	268702.2	5.65
427.23418	511918.7	10.77
444.26111	1555708.1	32.74
501.31888	195663.0	4.12
518.34591	1272586.0	26.78



NL: 6.75E7  
 Lcornutus#3391 RT: 8.49  
 AV: 1 T: FTMS + p ESI  
 Full ms [100.00-1500.00]

NL: 4.73E6  
 Lcornutus#3371-3416 RT:  
 8.46-8.55 AV: 8 F: FTMS  
 + p ESI d Full ms2  
 518.34@hcd35.00  
 [50.00-545.00]