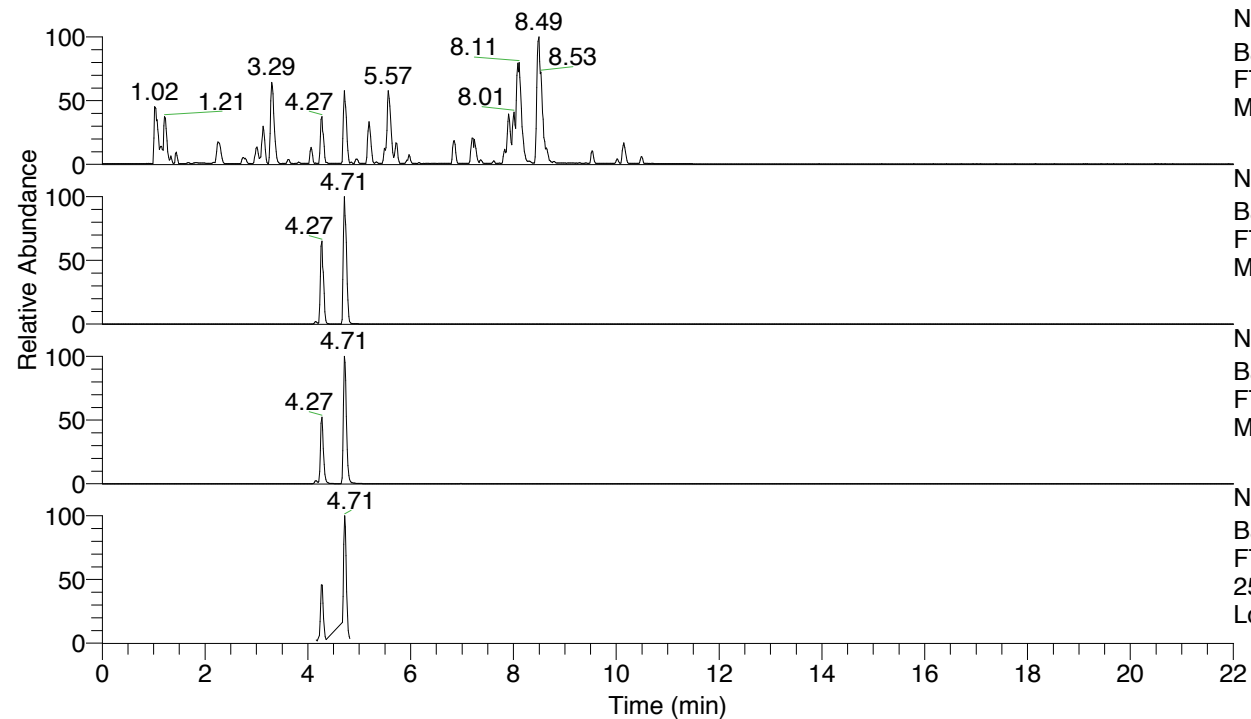


RT: 0.00 - 22.01



NL: 6.76E7
 Base Peak m/z= 100.00000-1500.00000 F:
 FTMS + p ESI Full ms [100.00-1500.00]
 MS Lcornutus

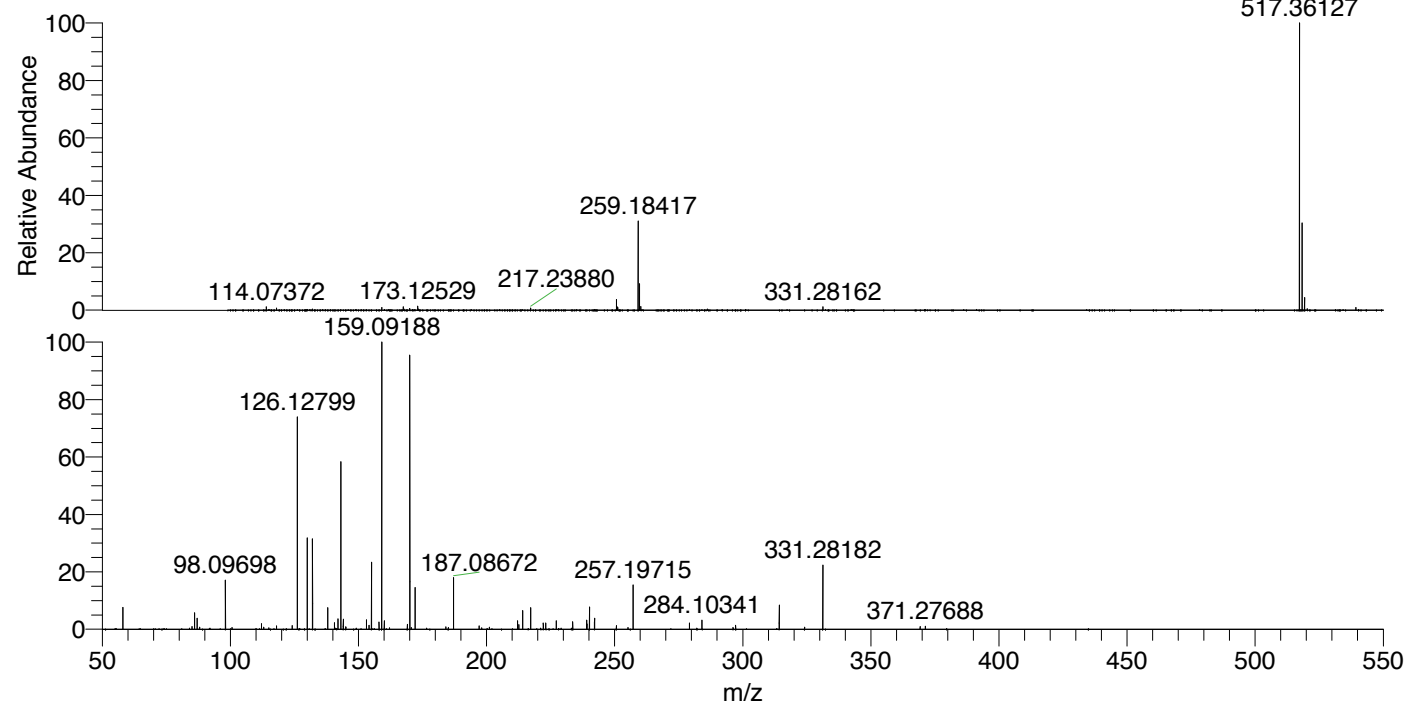
NL: 3.91E7
 Base Peak m/z= 517.35887-517.36405 F:
 FTMS + p ESI Full ms [100.00-1500.00]
 MS Lcornutus

NL: 1.25E7
 Base Peak m/z= 259.18334-259.18594 F:
 FTMS + p ESI Full ms [100.00-1500.00]
 MS Lcornutus

NL: 1.39E6
 Base Peak m/z= 50.00000-1500.00000 F:
 FTMS + p ESI d Full ms2
 259.18@hcd35.00 [50.00-545.00] MS
 Lcornutus

Lcornutus#1875-1893 RT: 4.70-4.74 AV: 4
 F: FTMS + p ESI d Full ms2 259.18@h ...
 m/z= 50.00000-1000.00000

m/z	Intensity	Relative
58.06603	85766.2	7.70
85.07661	10818.7	0.97
86.09708	65032.4	5.84
87.05598	43409.1	3.90
88.04000	8273.0	0.74
98.09698	196519.6	17.65
112.11260	22376.8	2.01
113.07127	7598.3	0.68
118.06552	13318.1	1.20
124.11234	14198.8	1.27
126.12799	826205.6	74.18
130.06532	362348.2	32.53
132.08096	356278.9	31.99
138.05492	83967.3	7.54
140.60463	26209.0	2.35
142.06531	40742.3	3.66
143.15444	649017.6	58.27
144.08098	40078.3	3.60
145.07613	9328.2	0.84
153.13897	36273.5	3.26
154.09786	15976.4	1.43
155.08167	267134.9	23.99
158.06050	29161.2	2.62
159.09188	1113719.3	100.00
160.07638	32881.3	2.95
160.18103	24804.6	2.23
169.07628	18805.9	1.69
170.06020	1062053.1	95.36
172.10835	163627.0	14.69
184.07609	9336.5	0.84
187.08672	200559.8	18.01
197.07113	12524.4	1.12
201.10240	8036.1	0.72
212.10327	33122.8	2.97
212.63968	18544.9	1.67
214.09779	73595.7	6.61
217.23881	83688.5	7.51
222.16059	24285.3	2.18
223.14494	25071.9	2.25
227.22364	32737.1	2.94
233.64504	30030.3	2.70
239.08206	36143.6	3.25
239.18677	20639.9	1.85
240.17051	86163.3	7.74
242.15859	43684.1	3.92
250.67117	14432.1	1.30
257.19715	172135.0	15.46
279.21874	24491.2	2.20
284.10341	35080.6	3.15
297.19279	15998.6	1.44
297.22745	14110.6	1.27
314.25560	95074.8	8.54
331.28182	249011.2	22.36
369.26060	11207.4	1.01
371.27688	11670.3	1.05



NL: 3.87E7
 Lcornutus#1879 RT: 4.71
 AV: 1 T: FTMS + p ESI
 Full ms [100.00-1500.00]

NL: 1.11E6
 Lcornutus#1872-1897 RT:
 4.70-4.74 AV: 4 F: FTMS
 + p ESI d Full ms2
 259.18@hcd35.00
 [50.00-545.00]

Lcornutus#1875-1893 RT: 4.70-4.74 AV: 4

F: FTMS + p ESI d Full ms2 259.18@hcd35.00 [50.00-545.00]

m/z= 50.00000-1000.00000

m/z	Intensity	Relative
58.06603	85766.2	7.70
85.07661	10818.7	0.97
86.09708	65032.4	5.84
87.05598	43409.1	3.90
88.04000	8273.0	0.74
98.09698	196519.6	17.65
100.61031	6684.6	0.60
112.11260	22376.8	2.01
113.07127	7598.3	0.68
115.05452	6074.1	0.55
118.06552	13318.1	1.20
124.11234	14198.8	1.27
126.12799	826205.6	74.18
130.06532	362348.2	32.53
132.08096	356278.9	31.99
138.05492	83967.3	7.54
140.60463	26209.0	2.35
142.06531	40742.3	3.66
143.15444	649017.6	58.27
144.08098	40078.3	3.60
145.07613	9328.2	0.84
153.13897	36273.5	3.26
154.09786	15976.4	1.43
155.08167	267134.9	23.99
158.06050	29161.2	2.62
159.09188	1113719.3	100.00
160.07638	32881.3	2.95
160.18103	24804.6	2.23
169.07628	18805.9	1.69
170.06020	1062053.1	95.36
170.62133	6316.4	0.57
172.10835	163627.0	14.69
184.07609	9336.5	0.84
185.07120	6800.1	0.61
187.08672	200559.8	18.01
197.07113	12524.4	1.12
201.10240	8036.1	0.72
212.10327	33122.8	2.97
212.63968	18544.9	1.67

Lcornutus#1875-1893 RT: 4.70-4.74 AV: 4

F: FTMS + p ESI d Full ms2 259.18@hcd35.00 [50.00-545.00]

m/z= 50.00000-1000.00000

m/z	Intensity	Relative
214.09779	73595.7	6.61
217.23881	83688.5	7.51
222.16059	24285.3	2.18
223.14494	25071.9	2.25
227.22364	32737.1	2.94
233.64504	30030.3	2.70
239.08206	36143.6	3.25
239.18677	20639.9	1.85
240.17051	86163.3	7.74
242.15859	43684.1	3.92
250.67117	14432.1	1.30
255.18187	7003.6	0.63
257.19715	172135.0	15.46
279.21874	24491.2	2.20
284.10341	35080.6	3.15
296.24464	7321.3	0.66
297.19279	15998.6	1.44
297.22745	14110.6	1.27
314.25560	95074.8	8.54
324.13429	7516.9	0.67
331.28182	249011.2	22.36
369.26060	11207.4	1.01
371.27688	11670.3	1.05