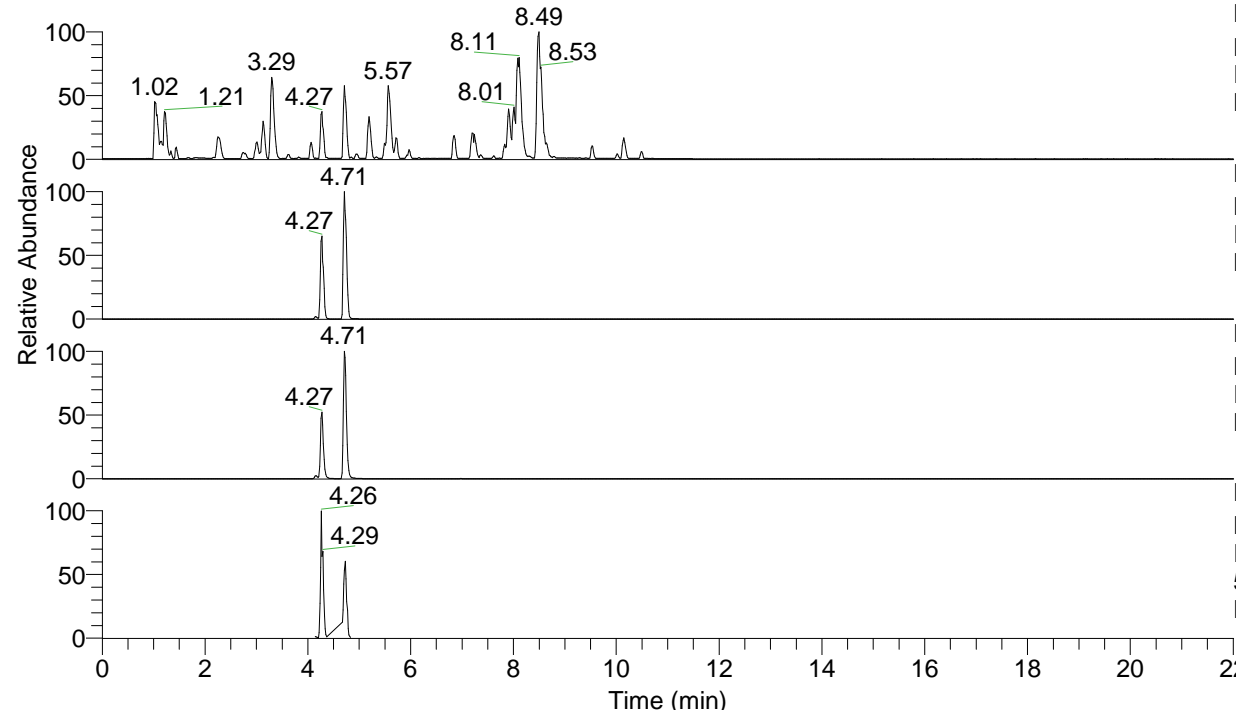


RT: 0.00 - 22.01



NL: 6.76E7
 Base Peak m/z= 100.00000-1500.00000 F:
 FTMS + p ESI Full ms [100.00-1500.00]
 MS Lcornutus

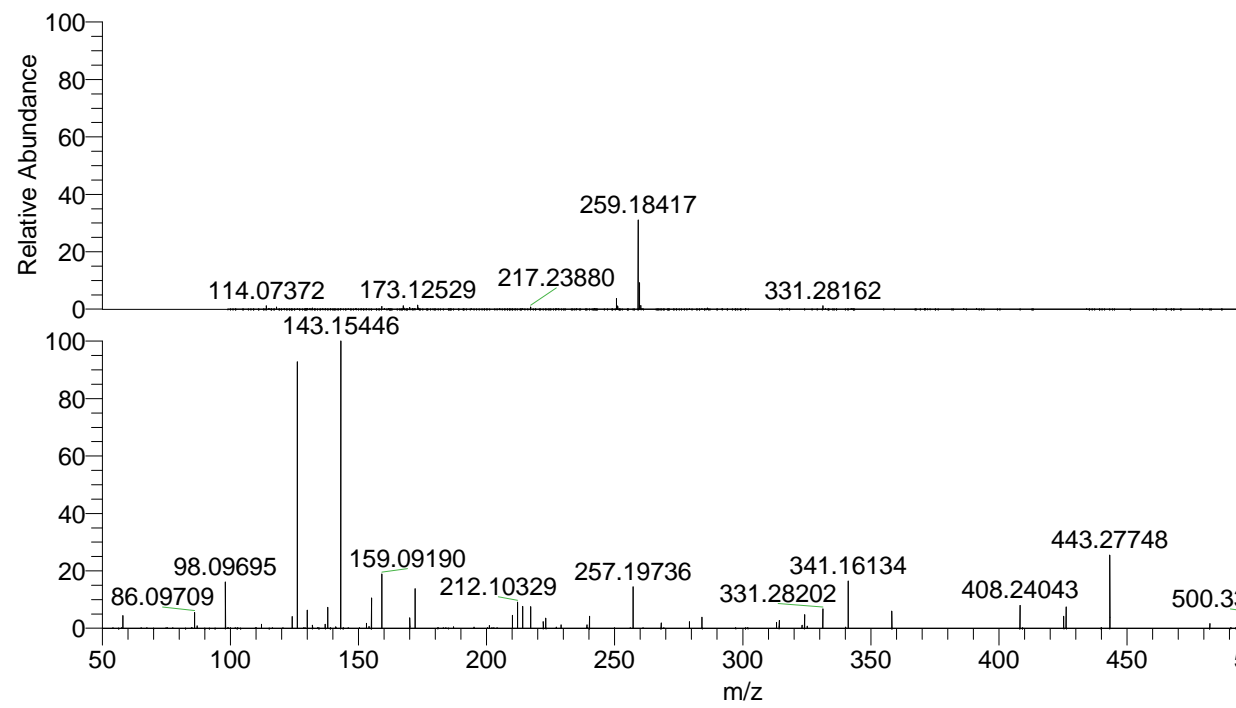
NL: 3.91E7
 Base Peak m/z= 517.35887-517.36405 F:
 FTMS + p ESI Full ms [100.00-1500.00]
 MS Lcornutus

NL: 1.25E7
 Base Peak m/z= 259.18334-259.18594 F:
 FTMS + p ESI Full ms [100.00-1500.00]
 MS Lcornutus

NL: 6.04E6
 Base Peak m/z= 50.00000-1500.00000 F:
 FTMS + p ESI d Full ms2
 517.36@hcd35.00 [50.00-545.00] MS
 Lcornutus

Lcornutus#1874-1904 RT: 4.70-4.77 AV: 6
 F: FTMS + p ESI d Full ms2 517.36@h ...
 m/z= 50.00000-1000.00000

m/z	Intensity	Relative
58.06601	111292.2	4.48
86.09709	140065.7	5.64
87.05608	19787.4	0.80
98.09694	417719.8	16.83
112.11257	40917.9	1.65
124.11252	106356.4	4.28
126.12801	2316374.3	93.32
130.06531	158879.6	6.40
132.08113	28446.5	1.15
137.07139	35365.9	1.42
138.05507	181247.7	7.30
141.13887	14775.2	0.60
143.08195	19016.2	0.77
143.15446	2482139.5	100.00
153.13897	40278.5	1.62
154.09756	13449.3	0.54
155.08165	274965.1	11.08
159.09190	473528.1	19.08
170.06058	88782.2	3.58
172.10826	349528.3	14.08
201.10282	21414.7	0.86
210.08797	109955.0	4.43
212.10325	230484.5	9.29
214.09794	198099.8	7.98
217.23894	185757.8	7.48
222.16032	61815.4	2.49
223.14471	86418.1	3.48
229.13003	29419.0	1.19
239.18753	26277.1	1.06
240.17120	105625.8	4.26
257.19737	358634.1	14.45
268.16613	46851.5	1.89
279.21835	61554.6	2.48
284.10383	90966.8	3.66
313.16627	48968.1	1.97
314.25615	72440.9	2.92
323.15144	27535.6	1.11
324.13452	116524.1	4.69
325.16614	17019.7	0.69
331.28200	167067.1	6.73
341.16132	417804.4	16.83
358.18731	156028.9	6.29
408.24039	204454.3	8.24
425.26783	105978.6	4.27
426.25071	192103.9	7.74
443.27743	641962.4	25.86
482.32488	40999.7	1.65
500.33372	121194.3	4.88
517.36164	849941.8	34.24



NL: 3.87E7
 Lcornutus#1879 RT: 4.71
 AV: 1 T: FTMS + p ESI
 Full ms [100.00-1500.00]

NL: 2.72E6
 Lcornutus#1872-1899 RT:
 4.70-4.76 AV: 5 F: FTMS
 + p ESI d Full ms2
 517.36@hcd35.00
 [50.00-545.00]

m/z	Intensity	Relative
114.07372		
143.15446		
159.09190		
173.12529		
217.23880		
259.18417		
331.28162		
517.36127		