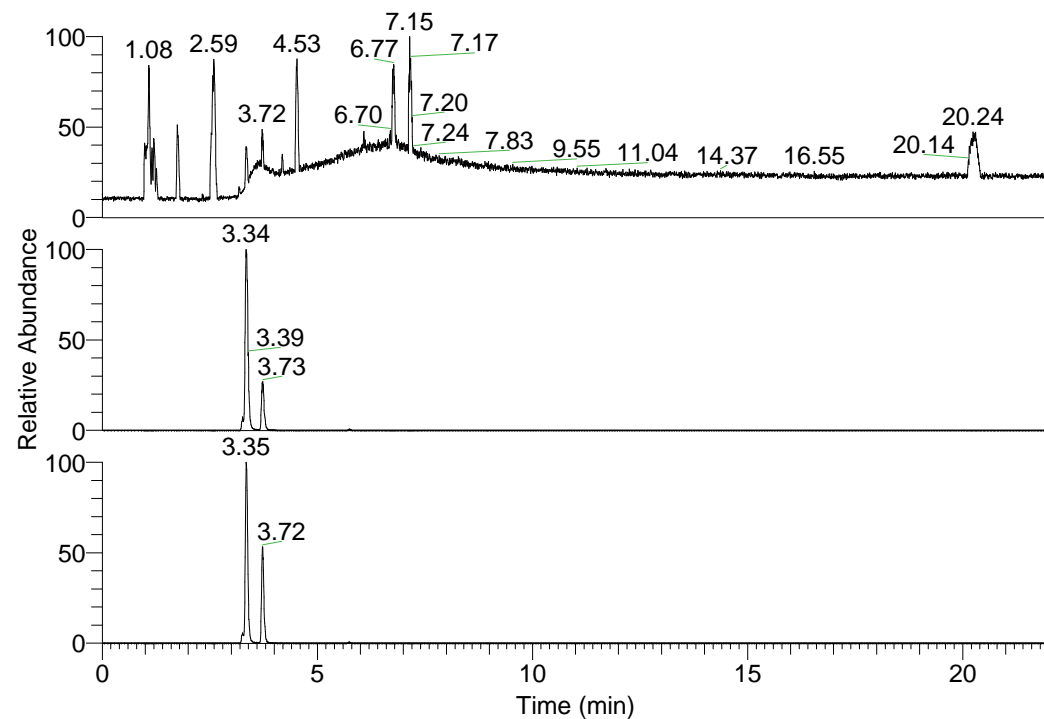


RT: 0.00 - 22.01



NL: 6.93E7
 Base Peak m/z=
 100.00000-1500.00000 F:
 FTMS + p ESI Full ms
 [100.00-1500.00] MS
 Lcornutus_HDX

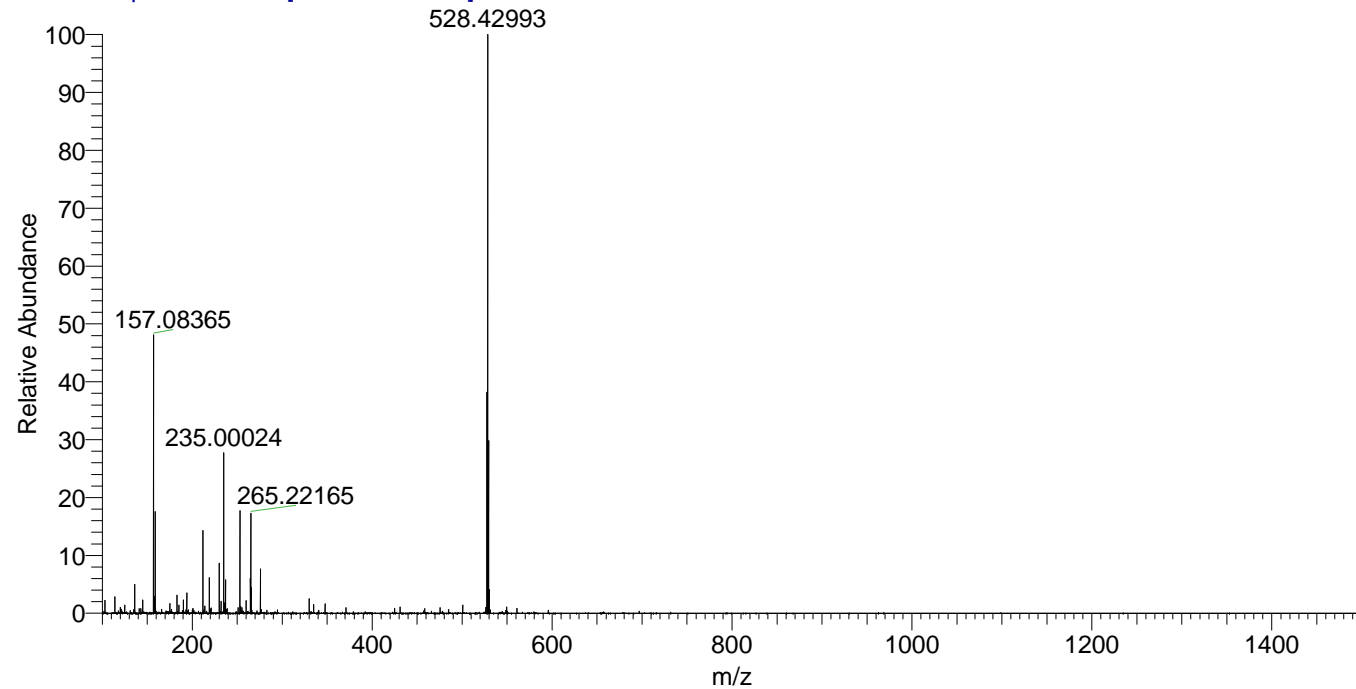
NL: 2.71E7
 Base Peak m/z=
 528.42787-528.43315 F:
 FTMS + p ESI Full ms
 [100.00-1500.00] MS
 Lcornutus_HDX

NL: 4.67E6
 Base Peak m/z=
 265.22098-265.22364 F:
 FTMS + p ESI Full ms
 [100.00-1500.00] MS
 Lcornutus_HDX

Lcornutus_HDX#516 RT: 3.34
 T: FTMS + p ESI Full ms [100.00-1500.00]
 m/z= 528.00000-529.00000

m/z	Intensity	Relative	Delta (ppm)	Composition
528.42993	27134992.0	100.00	-0.05	C ₂₆ H ₃₄ ² H ₁₁ O ₃ N ₈
			2.88	C ₂₆ H ₃₂ ² H ₁₂ O ₃ N ₈
			-2.98	C ₂₆ H ₃₆ ² H ₁₀ O ₃ N ₈

Lcornutus_HDX #516 RT: 3.34 AV: 1 NL: 2.60E7
 T: FTMS + p ESI Full ms [100.00-1500.00]



Lcornutus_HDX #516 RT: 3.34 AV: 1 NL: 2.60E7
 T: FTMS + p ESI Full ms [100.00-1500.00]

