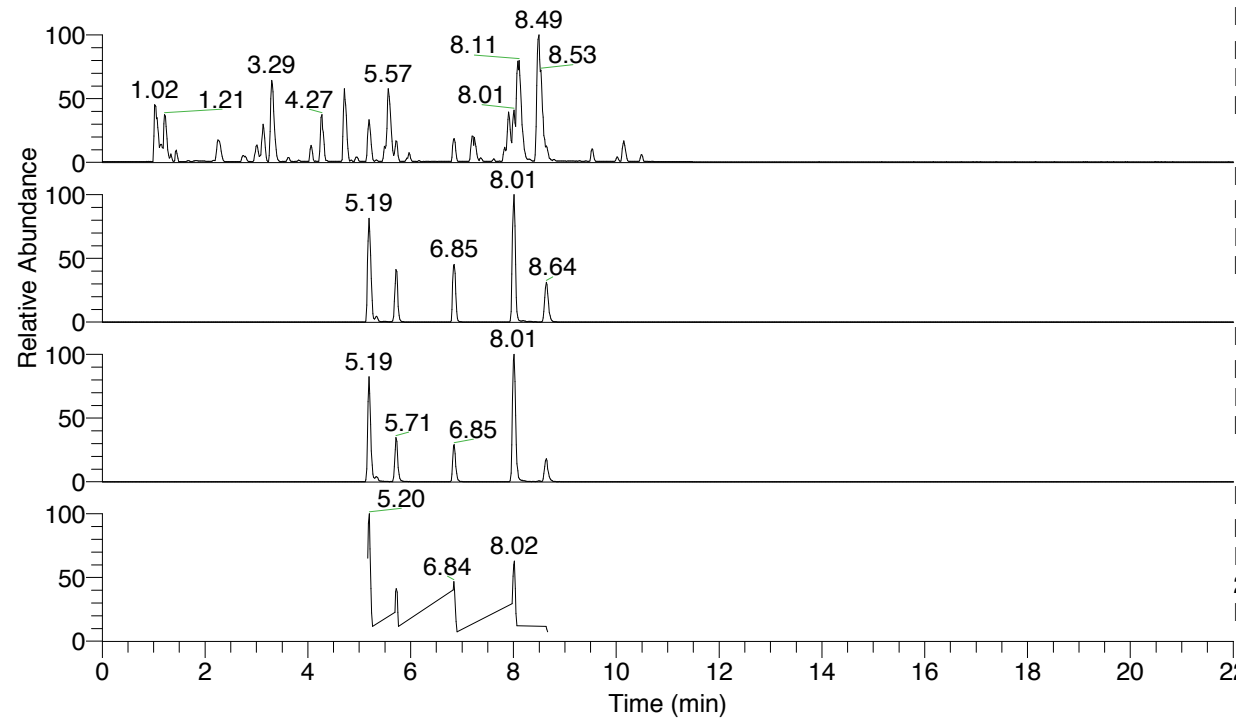


RT: 0.00 - 22.01



NL: 6.76E7
 Base Peak m/z= 100.00000-1500.00000 F:
 FTMS + p ESI Full ms [100.00-1500.00]
 MS Lcornutus

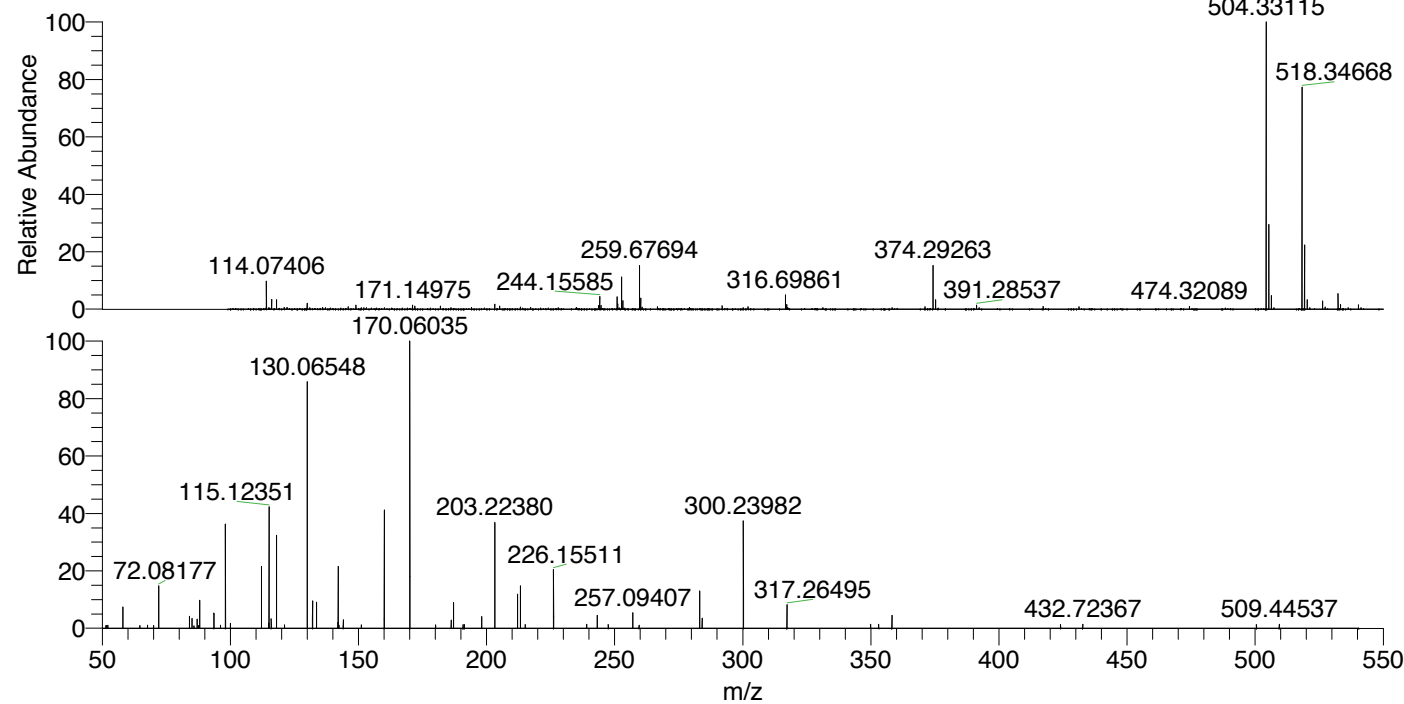
NL: 2.78E7
 Base Peak m/z= 504.32731-504.33235 F:
 FTMS + p ESI Full ms [100.00-1500.00]
 MS Lcornutus

NL: 5.32E6
 Base Peak m/z= 252.66757-252.67009 F:
 FTMS + p ESI Full ms [100.00-1500.00]
 MS Lcornutus

NL: 9.29E5
 Base Peak m/z= 50.00000-1500.00000 F:
 FTMS + p ESI d Full ms2
 252.67@hcd35.00 [50.00-535.00] MS
 Lcornutus

Lcornutus#3450-3462 RT: 8.63-8.66 AV:
 F: FTMS + p ESI d Full ms2 252.67 ...
 m/z= 50.00000-1000.00000

m/z	Intensity	Relative
58.06605	6426.4	7.53
72.08177	12575.3	14.74
84.08160	3623.3	4.25
85.08948	2887.5	3.39
87.05609	2709.8	3.18
88.04018	8577.3	10.06
93.60273	4549.0	5.33
96.14387	939.2	1.10
98.09717	31440.3	36.86
99.98799	1493.9	1.75
112.11264	18503.4	21.69
115.05138	1573.7	1.85
115.12351	36329.2	42.60
115.96461	2884.9	3.38
118.06550	28176.6	33.04
121.10470	1033.2	1.21
130.06548	75674.2	88.73
132.08118	2850.3	3.34
132.15010	8232.3	9.65
133.59727	7897.1	9.26
142.06539	1720.3	2.02
142.11067	18498.7	21.69
142.13482	3606.1	4.23
142.42609	939.4	1.10
144.08124	2550.3	2.99
151.17933	1052.0	1.23
160.07606	36411.1	42.69
170.06035	85289.4	100.00
180.15665	980.6	1.15
186.19707	2428.8	2.85
187.08721	7649.6	8.97
190.80999	1110.2	1.30
191.31512	1062.7	1.25
198.10819	3509.8	4.12
203.22380	31461.6	36.89
212.07056	10405.1	12.20
213.20875	13026.8	15.27
215.08169	1171.2	1.37
226.15511	17483.9	20.50
239.08201	1159.8	1.36
243.18357	3956.6	4.64
247.52314	1088.6	1.28
257.09407	4669.6	5.47
259.52705	924.5	1.08
283.21274	11263.9	13.21
284.16144	3022.4	3.54
300.23982	32951.2	38.63
317.26495	6983.0	8.19
349.93190	1181.9	1.39
353.07329	1252.3	1.47
358.24667	3966.0	4.65
424.04146	1111.6	1.30
432.72367	1193.1	1.40
500.50042	1076.2	1.26
509.44537	1183.9	1.39



NL: 8.27E6
 Lcornutus#3451 RT: 8.64
 AV: 1 T: FTMS + p ESI
 Full lock ms
 [100.00-1500.00]

NL: 8.53E4
 Lcornutus#3446-3463 RT:
 8.63-8.66 AV: 3 F: FTMS
 + p ESI d Full ms2
 252.67@hcd35.00
 [50.00-535.00]

Lcornutus#3450-3462 RT: 8.63-8.66 AV: 3

F: FTMS + p ESI d Full ms2 252.67@hcd35.00 [50.00-535.00]

m/z= 50.00000-1000.00000

m/z	Intensity	Relative
51.47528	803.0	0.94
51.63139	766.8	0.90
52.21199	898.3	1.05
58.06605	6426.4	7.53
64.73821	793.3	0.93
67.64305	903.6	1.06
70.02966	851.0	1.00
72.08177	12575.3	14.74
84.08160	3623.3	4.25
85.08948	2887.5	3.39
85.77821	774.7	0.91
87.05609	2709.8	3.18
87.56239	835.5	0.98
88.04018	8577.3	10.06
93.60273	4549.0	5.33
96.14387	939.2	1.10
98.09717	31440.3	36.86
99.98799	1493.9	1.75
112.11264	18503.4	21.69
115.05138	1573.7	1.85
115.12351	36329.2	42.60
115.96461	2884.9	3.38
118.06550	28176.6	33.04
121.10470	1033.2	1.21
130.06548	75674.2	88.73
132.08118	2850.3	3.34
132.15010	8232.3	9.65
133.59727	7897.1	9.26
142.06539	1720.3	2.02
142.11067	18498.7	21.69
142.13482	3606.1	4.23
142.42609	939.4	1.10
144.08124	2550.3	2.99
151.17933	1052.0	1.23
160.07606	36411.1	42.69
170.06035	85289.4	100.00
180.15665	980.6	1.15
186.19707	2428.8	2.85
187.08721	7649.6	8.97

Lcornutus#3450-3462 RT: 8.63-8.66 AV: 3

F: FTMS + p ESI d Full ms2 252.67@hcd35.00 [50.00-535.00]

m/z= 50.00000-1000.00000

m/z	Intensity	Relative
190.80999	1110.2	1.30
191.31512	1062.7	1.25
198.10819	3509.8	4.12
203.22380	31461.6	36.89
212.07056	10405.1	12.20
213.20875	13026.8	15.27
215.08169	1171.2	1.37
226.15511	17483.9	20.50
239.08201	1159.8	1.36
243.18357	3956.6	4.64
247.52314	1088.6	1.28
257.09407	4669.6	5.47
259.52705	924.5	1.08
283.21274	11263.9	13.21
284.16144	3022.4	3.54
300.23982	32951.2	38.63
317.26495	6983.0	8.19
349.93190	1181.9	1.39
353.07329	1252.3	1.47
358.24667	3966.0	4.65
424.04146	1111.6	1.30
432.72367	1193.1	1.40
500.50042	1076.2	1.26
509.44537	1183.9	1.39