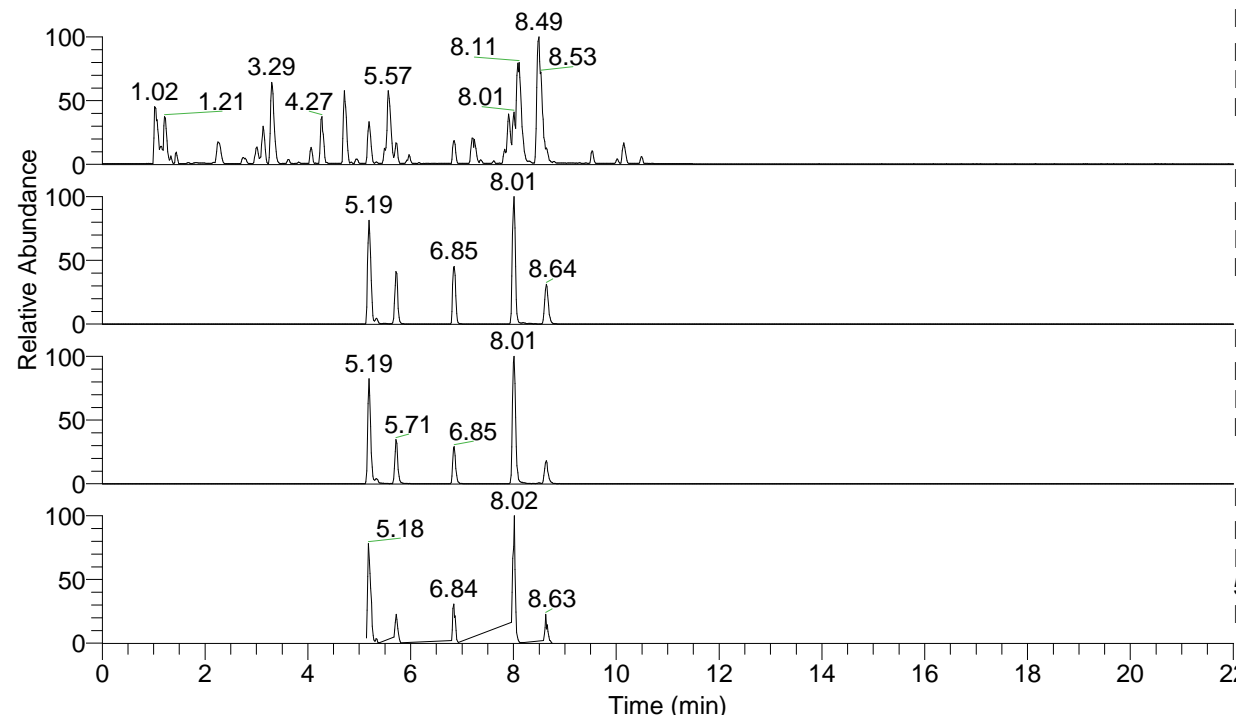


RT: 0.00 - 22.01



NL: 6.76E7
 Base Peak m/z= 100.00000-1500.00000 F:
 FTMS + p ESI Full ms [100.00-1500.00]
 MS Lcornutus

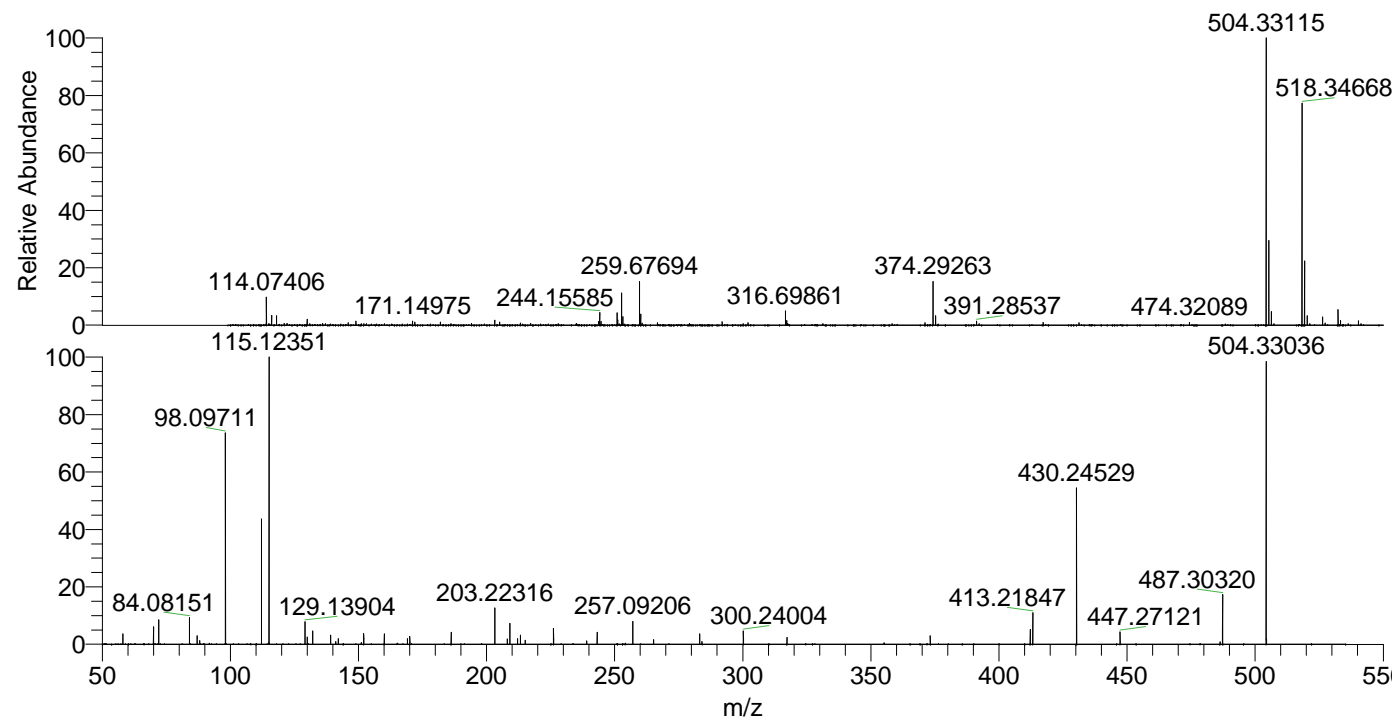
NL: 2.78E7
 Base Peak m/z= 504.32731-504.33235 F:
 FTMS + p ESI Full ms [100.00-1500.00]
 MS Lcornutus

NL: 5.32E6
 Base Peak m/z= 252.66757-252.67009 F:
 FTMS + p ESI Full ms [100.00-1500.00]
 MS Lcornutus

NL: 4.28E6
 Base Peak m/z= 50.00000-1500.00000 F:
 FTMS + p ESI d Full ms2
 504.33@hcd35.00 [50.00-530.00] MS
 Lcornutus

Lcornutus#3436-3464 RT: 8.60-8.67 AV:
 F: FTMS + p ESI d Full ms2 504.33 ...
 m/z= 50.00000-1000.00000

m/z	Intensity	Relative
58.06600	18398.6	3.66
70.06598	31358.7	6.23
72.08163	43223.6	8.59
84.08151	47789.1	9.50
87.05599	15212.6	3.02
88.04005	6659.6	1.32
98.09711	372512.7	74.06
112.11263	219812.1	43.70
115.05077	2536.2	0.50
115.12351	503000.3	100.00
129.13904	39674.7	7.89
130.06573	12806.6	2.55
132.14988	23672.3	4.71
139.12344	16070.8	3.19
141.10266	4977.8	0.99
142.13422	10049.3	2.00
151.08661	2866.9	0.57
152.07104	19068.1	3.79
160.07642	18207.2	3.62
169.09754	10169.6	2.02
170.06065	14209.5	2.82
186.19682	21334.9	4.24
203.22316	63648.9	12.65
208.14495	9116.0	1.81
209.12879	37013.5	7.36
212.07126	9921.8	1.97
213.20756	16269.1	3.23
215.08233	7120.1	1.42
226.15544	28852.1	5.74
239.08199	6139.4	1.22
243.18251	21490.1	4.27
257.09206	41843.3	8.32
265.20331	7990.2	1.59
283.21304	18420.6	3.66
284.10382	4875.9	0.97
300.24004	23304.9	4.63
317.26699	12349.5	2.46
355.17740	2712.1	0.54
373.18716	14895.8	2.96
412.23460	26858.6	5.34
413.21847	55736.2	11.08
430.24529	275154.9	54.70
447.27121	22328.8	4.44
486.31709	4232.5	0.84
487.30320	87593.0	17.41
504.33036	497585.3	98.92



NL: 8.27E6
 Lcornutus#3451 RT: 8.64
 AV: 1 T: FTMS + p ESI
 Full lock ms
 [100.00-1500.00]

NL: 5.03E5
 Lcornutus#3433-3467 RT:
 8.60-8.67 AV: 6 F: FTMS
 + p ESI d Full ms2
 504.33@hcd35.00
 [50.00-530.00]