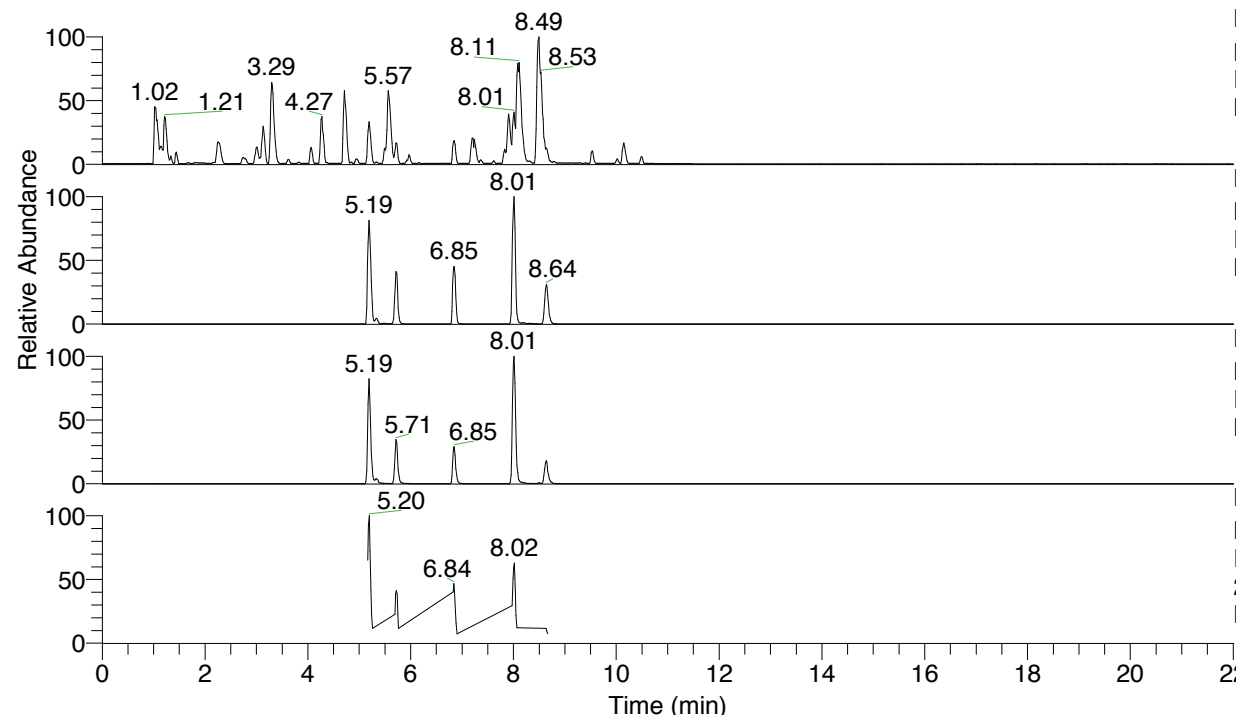


RT: 0.00 - 22.01



NL: 6.76E7
 Base Peak m/z= 100.00000-1500.00000 F:
 FTMS + p ESI Full ms [100.00-1500.00]
 MS Lcornutus

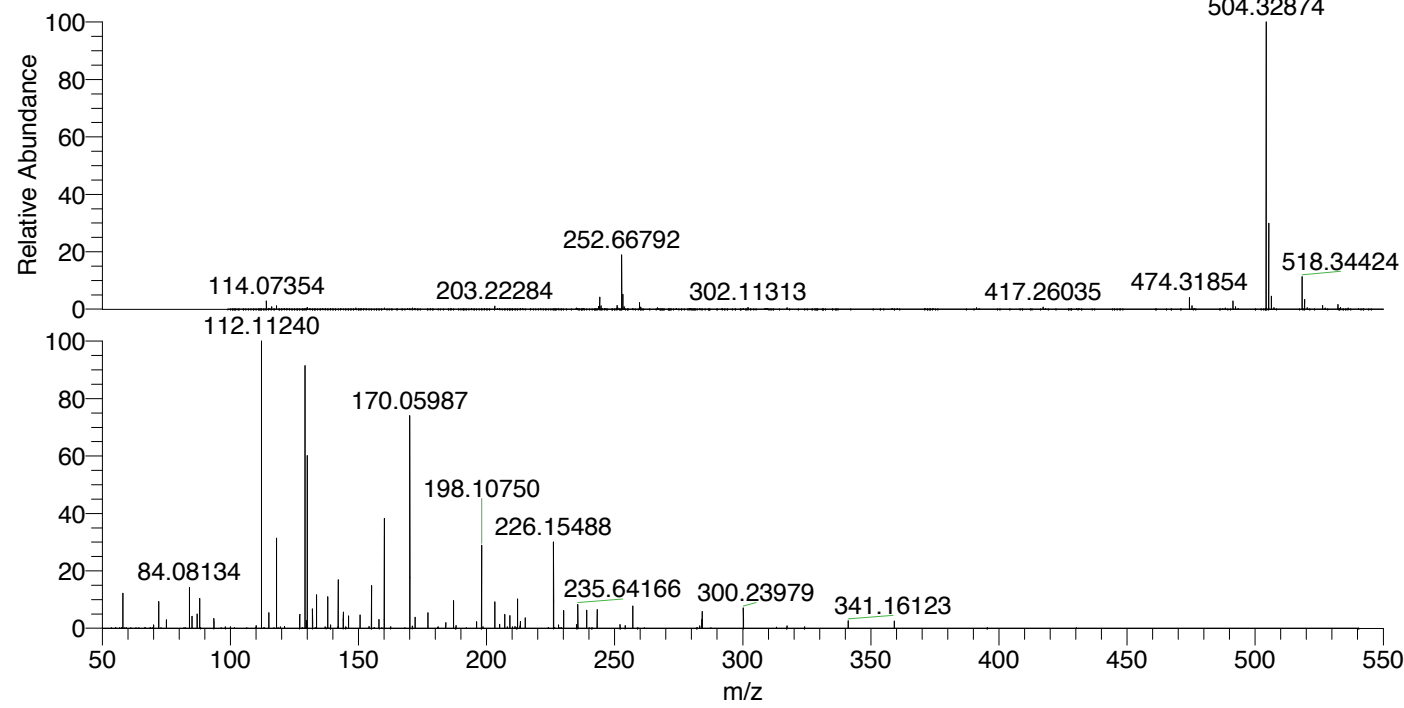
NL: 2.78E7
 Base Peak m/z= 504.32731-504.33235 F:
 FTMS + p ESI Full ms [100.00-1500.00]
 MS Lcornutus

NL: 5.32E6
 Base Peak m/z= 252.66757-252.67009 F:
 FTMS + p ESI Full ms [100.00-1500.00]
 MS Lcornutus

NL: 9.29E5
 Base Peak m/z= 50.00000-1500.00000 F:
 FTMS + p ESI d Full ms2
 252.67@hcd35.00 [50.00-535.00] MS
 Lcornutus

Lcornutus#3184-3201 RT: 7.99-8.03 AV:
 F: FTMS + p ESI d Full ms2 252.67 ...
 m/z= 50.00000-1000.00000

m/z	Intensity	Relative
58.06594	58136.0	12.43
70.02945	5614.0	1.20
72.08153	44127.5	9.44
75.09234	14060.4	3.01
84.08134	67256.3	14.38
85.07660	19530.3	4.18
85.08928	5409.4	1.16
87.05587	23689.1	5.07
88.03990	49608.3	10.61
93.60245	16123.6	3.45
112.11240	467622.8	100.00
115.05020	25861.7	5.53
118.06534	151060.3	32.30
127.08674	22798.3	4.88
129.13875	434045.1	92.82
129.61824	12901.2	2.76
130.06523	287344.6	61.45
132.08062	32374.9	6.92
133.59671	55245.6	11.81
138.05493	52708.1	11.27
139.12312	5636.5	1.21
142.10998	79051.0	16.90
144.08094	26443.8	5.65
146.16528	20596.7	4.40
150.62359	21732.2	4.65
155.08147	69764.7	14.92
158.06026	14635.8	3.13
160.07568	182642.7	39.06
170.05987	347342.4	74.28
172.10811	18036.4	3.86
177.10244	25458.1	5.44
184.07558	9036.9	1.93
187.08635	45175.7	9.66
196.07631	10928.4	2.34
198.10750	135289.0	28.93
203.22279	42922.2	9.18
205.09700	6788.9	1.45
207.11275	23465.0	5.02
209.12868	20731.6	4.43
212.07055	47455.6	10.15
213.20776	11602.9	2.48
215.08185	17183.4	3.67
226.15488	144249.1	30.85
230.11370	29825.2	6.38
235.14937	5871.6	1.26
235.64166	39707.9	8.49
239.08110	29738.9	6.36
243.18183	31417.3	6.72
252.13450	6270.6	1.34
257.09187	37212.4	7.96
284.10324	14201.6	3.04
284.15999	27524.3	5.89
300.23979	33253.9	7.11
341.16123	12472.4	2.67
359.17186	11977.8	2.56



NL: 2.68E7
 Lcornutus#3193 RT: 8.01
 AV: 1 T: FTMS + p ESI
 Full ms [100.00-1500.00]

NL: 4.68E5
 Lcornutus#3179-3202 RT:
 7.99-8.03 AV: 4 F: FTMS
 + p ESI d Full ms2
 252.67@hcd35.00
 [50.00-535.00]

Lcornutus#3184-3201 RT: 7.99-8.03 AV: 4

F: FTMS + p ESI d Full ms2 252.67@hcd35.00 [50.00-535.00]

m/z= 50.00000-1000.00000

m/z	Intensity	Relative
58.06594	58136.0	12.43
70.02945	5614.0	1.20
70.06593	2394.9	0.51
72.08153	44127.5	9.44
75.09234	14060.4	3.01
84.08134	67256.3	14.38
85.07660	19530.3	4.18
85.08928	5409.4	1.16
87.05587	23689.1	5.07
88.03990	49608.3	10.61
93.60245	16123.6	3.45
98.09694	2531.0	0.54
99.98743	2578.8	0.55
110.02406	3962.5	0.85
110.09689	3901.4	0.83
112.11240	467622.8	100.00
115.05020	25861.7	5.53
118.06534	151060.3	32.30
121.10485	2747.6	0.59
127.08674	22798.3	4.88
129.13875	434045.1	92.82
129.61824	12901.2	2.76
130.06523	287344.6	61.45
132.08062	32374.9	6.92
133.59671	55245.6	11.81
137.07081	2662.9	0.57
138.05493	52708.1	11.27
139.12312	5636.5	1.21
142.06499	2553.8	0.55
142.10998	79051.0	16.90
144.08094	26443.8	5.65
145.07591	2445.5	0.52
146.16528	20596.7	4.40
150.62359	21732.2	4.65
154.09734	3089.5	0.66
155.08147	69764.7	14.92
158.06026	14635.8	3.13
160.07568	182642.7	39.06
170.05987	347342.4	74.28

Lcornutus#3184-3201 RT: 7.99-8.03 AV: 4

F: FTMS + p ESI d Full ms2 252.67@hcd35.00 [50.00-535.00]

m/z= 50.00000-1000.00000

m/z	Intensity	Relative
171.06362	3594.6	0.77
172.10811	18036.4	3.86
177.10244	25458.1	5.44
184.07558	9036.9	1.93
184.10906	3299.0	0.71
187.08635	45175.7	9.66
188.07096	4187.4	0.90
196.07631	10928.4	2.34
198.10750	135289.0	28.93
203.22279	42922.2	9.18
205.09700	6788.9	1.45
207.11275	23465.0	5.02
208.14451	2579.9	0.55
209.12868	20731.6	4.43
211.08754	2674.2	0.57
212.07055	47455.6	10.15
213.08641	4280.5	0.92
213.20776	11602.9	2.48
215.08185	17183.4	3.67
226.15488	144249.1	30.85
228.09845	5268.8	1.13
230.11370	29825.2	6.38
235.14937	5871.6	1.26
235.64166	39707.9	8.49
239.08110	29738.9	6.36
243.18183	31417.3	6.72
252.13450	6270.6	1.34
254.14971	4218.2	0.90
257.09187	37212.4	7.96
283.21266	3907.1	0.84
284.10324	14201.6	3.04
284.15999	27524.3	5.89
300.23979	33253.9	7.11
317.26664	3706.7	0.79
341.16123	12472.4	2.67
359.17186	11977.8	2.56