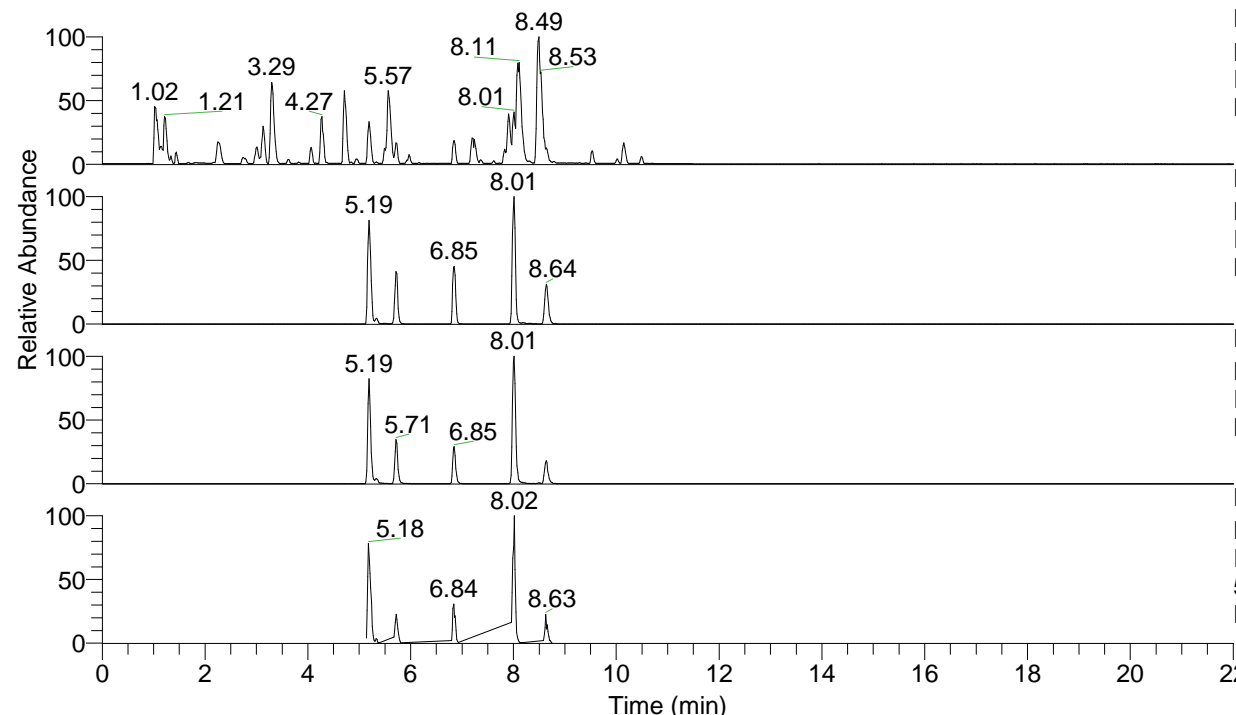


RT: 0.00 - 22.01



NL: 6.76E7
 Base Peak m/z= 100.00000-1500.00000 F:
 FTMS + p ESI Full ms [100.00-1500.00]
 MS Lcornutus

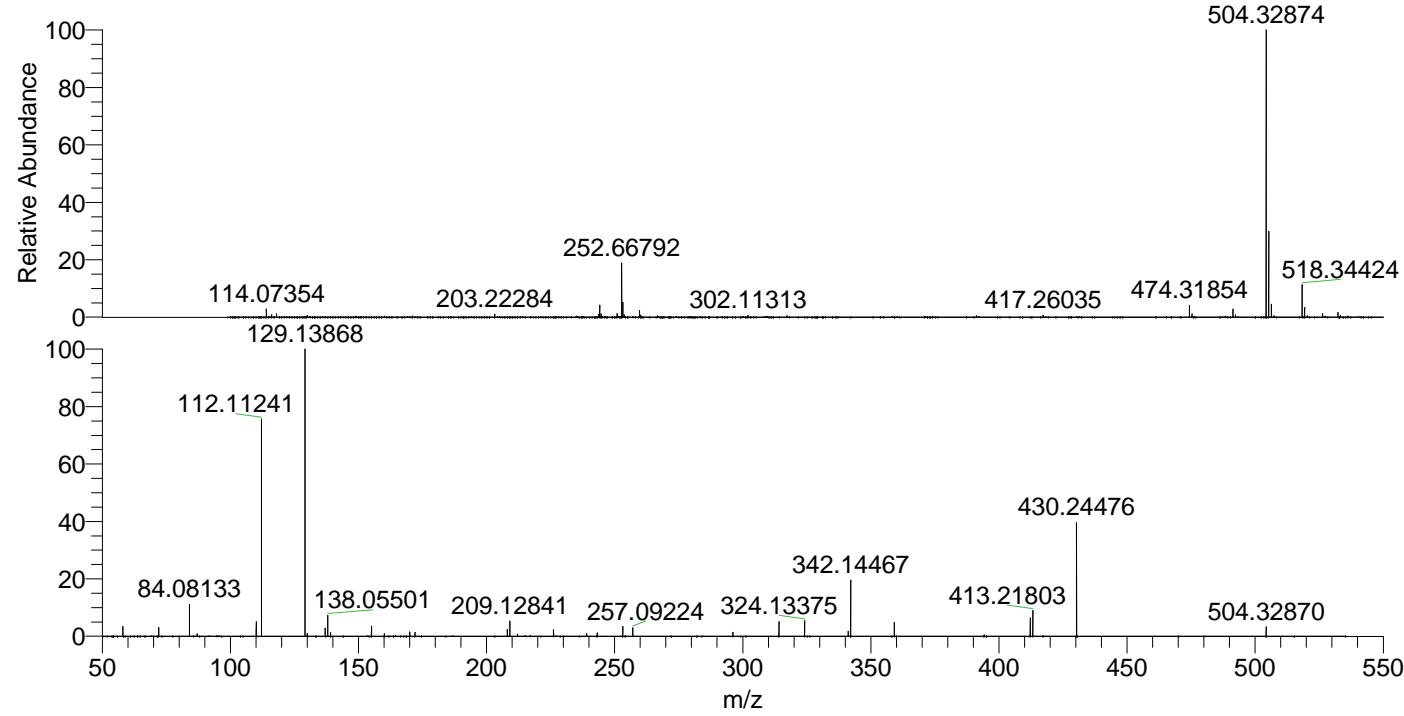
NL: 2.78E7
 Base Peak m/z= 504.32731-504.33235 F:
 FTMS + p ESI Full ms [100.00-1500.00]
 MS Lcornutus

NL: 5.32E6
 Base Peak m/z= 252.66757-252.67009 F:
 FTMS + p ESI Full ms [100.00-1500.00]
 MS Lcornutus

NL: 4.28E6
 Base Peak m/z= 50.00000-1500.00000 F:
 FTMS + p ESI d Full ms2
 504.33@hcd35.00 [50.00-530.00] MS
 Lcornutus

Lcornutus#3172-3206 RT: 7.96-8.05 AV: 7
 F: FTMS + p ESI d Full ms2 504.33@h ...
 m/z= 50.00000-1000.00000

m/z	Intensity	Relative
58.06601	75172.7	3.43
72.08147	64124.0	2.93
84.08133	233972.9	10.68
87.05588	18131.2	0.83
110.09680	110624.9	5.05
112.11241	1610685.3	73.52
129.13868	2190824.0	100.00
130.06516	19918.0	0.91
137.07097	64283.0	2.93
138.05501	159536.5	7.28
139.12302	28550.4	1.30
155.08144	76537.3	3.49
160.07565	20140.0	0.92
170.06004	30787.9	1.41
172.07554	12916.9	0.59
172.10775	29990.3	1.37
208.14470	52538.6	2.40
209.12841	111399.4	5.08
212.07013	16364.9	0.75
226.15499	46715.8	2.13
239.08146	20204.4	0.92
243.18111	23953.2	1.09
253.16605	72126.1	3.29
257.09220	64659.9	2.95
296.13948	27373.9	1.25
314.14973	108658.2	4.96
324.13377	113928.3	5.20
341.16011	36541.3	1.67
342.14465	416825.7	19.03
359.17079	102351.7	4.67
394.22412	11061.4	0.50
412.23370	135369.3	6.18
413.21799	187920.9	8.58
430.24477	833949.8	38.07
504.32867	72364.7	3.30



NL: 2.68E7
 Lcornutus#3193 RT: 8.01
 AV: 1 T: FTMS + p ESI
 Full ms [100.00-1500.00]

NL: 2.36E6
 Lcornutus#3173-3207 RT:
 7.97-8.05 AV: 6 F: FTMS
 + p ESI d Full ms2
 504.33@hcd35.00
 [50.00-530.00]