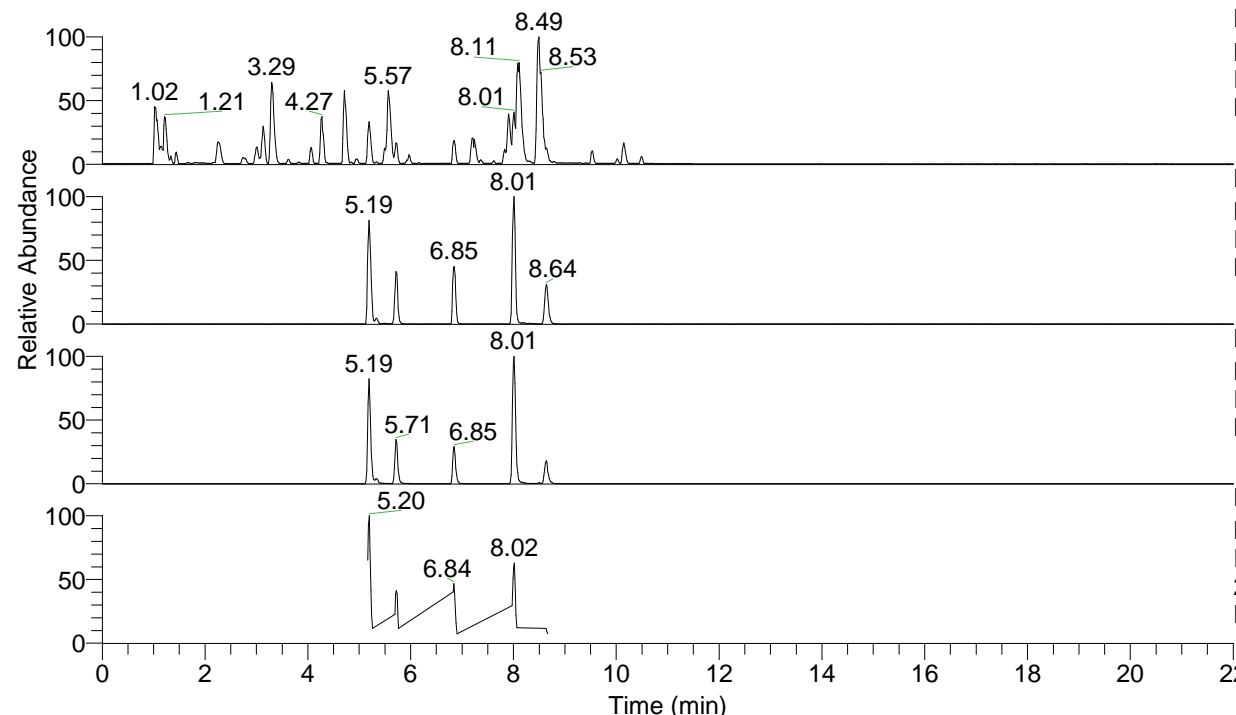


RT: 0.00 - 22.01



NL: 6.76E7
 Base Peak m/z= 100.00000-1500.00000 F:
 FTMS + p ESI Full ms [100.00-1500.00]
 MS Lcornutus

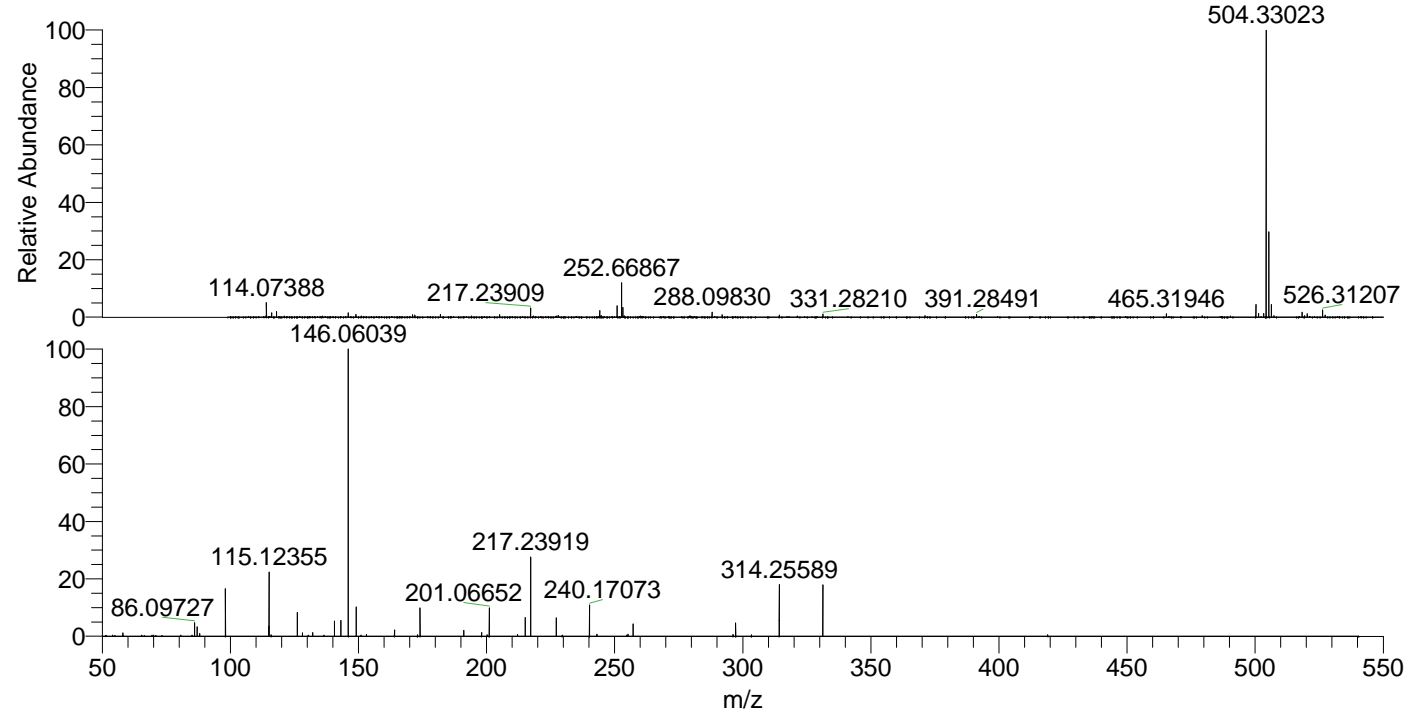
NL: 2.78E7
 Base Peak m/z= 504.32731-504.33235 F:
 FTMS + p ESI Full ms [100.00-1500.00]
 MS Lcornutus

NL: 5.32E6
 Base Peak m/z= 252.66757-252.67009 F:
 FTMS + p ESI Full ms [100.00-1500.00]
 MS Lcornutus

NL: 9.29E5
 Base Peak m/z= 50.00000-1500.00000 F:
 FTMS + p ESI d Full ms2
 252.67@hcd35.00 [50.00-535.00] MS
 Lcornutus

Lcornutus#2728-2733 RT: 6.84-6.85 AV:
 F: FTMS + p ESI d Full ms2 252.67 ...
 m/z= 50.00000-1000.00000

m/z	Intensity	Relative
58.06619	4541.4	1.18
86.09727	17895.7	4.65
87.05633	12653.5	3.29
88.04022	3774.4	0.98
98.09705	62922.3	16.36
115.05099	13267.3	3.45
115.11612	2189.9	0.57
115.12355	84944.5	22.08
115.96511	1969.9	0.51
126.12820	30705.9	7.98
128.11355	4527.7	1.18
132.15058	5039.9	1.31
140.60536	19661.1	5.11
143.15510	20833.4	5.42
146.06039	384666.8	100.00
149.11803	38133.7	9.91
153.13893	2165.6	0.56
164.07160	8136.0	2.12
174.05555	36496.4	9.49
191.08174	8012.9	2.08
198.05606	4665.7	1.21
200.21224	2002.6	0.52
201.06652	37403.0	9.72
212.13979	2378.6	0.62
215.08175	24969.8	6.49
217.23919	102308.0	26.60
227.22374	23553.2	6.12
240.17073	40117.3	10.43
243.07872	2640.1	0.69
255.21874	2663.0	0.69
257.19813	16175.1	4.20
296.24445	2501.1	0.65
297.22994	17174.8	4.46
314.25589	69383.4	18.04
331.28243	66106.6	17.19



NL: 1.23E7
 Lcornutus#2731 RT: 6.85
 AV: 1 T: FTMS + p ESI
 Full ms [100.00-1500.00]

NL: 3.70E5
 Lcornutus#2723-2733 RT:
 6.84-6.85 AV: 2 F: FTMS
 + p ESI d Full ms2
 252.67@hcd35.00
 [50.00-535.00]