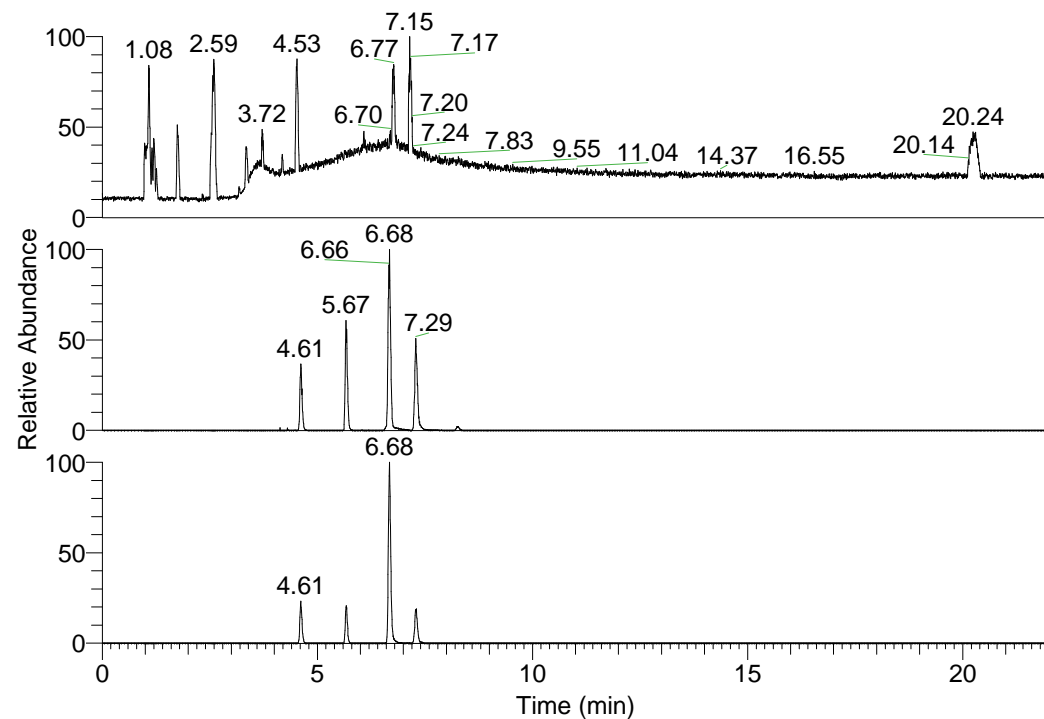


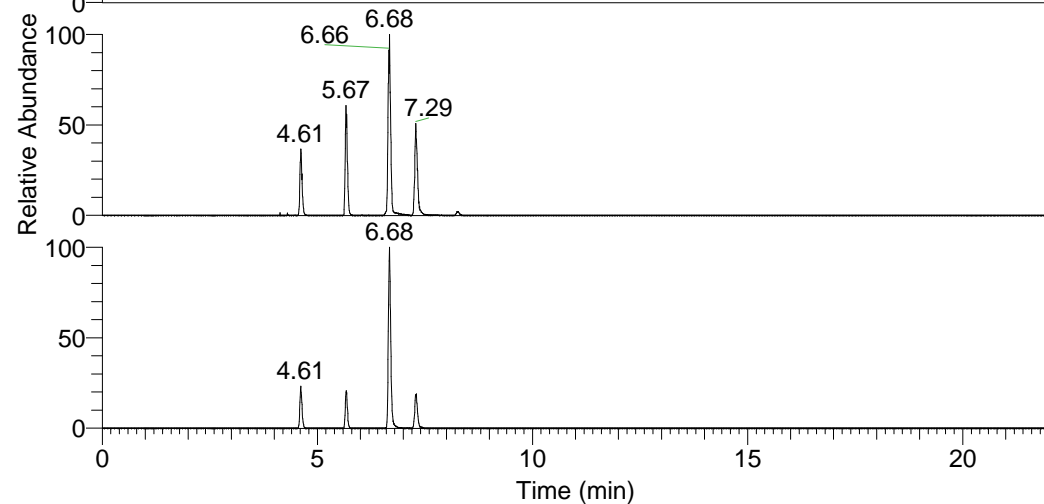
RT: 0.00 - 22.01



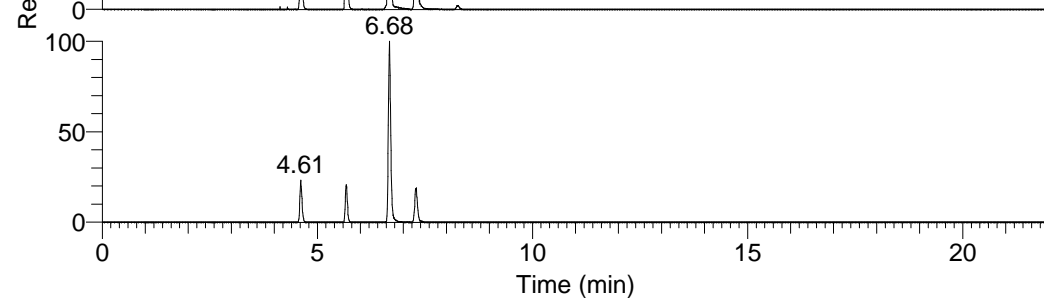
NL: 6.93E7  
 Base Peak m/z=  
 100.00000-1500.00000 F:  
 FTMS + p ESI Full ms  
 [100.00-1500.00] MS  
 Lcornutus\_HDX

Lcornutus\_HDX#722 RT: 4.61  
 T: FTMS + p ESI Full ms [100.00-1500.00]

m/z	Intensity	Relative	Delta (ppm)	Composition
515.39838	7156784.5	100.00	0.10	C <sub>25</sub> H <sub>31</sub> <sup>2</sup> H <sub>11</sub> O <sub>4</sub> N <sub>7</sub>
			-2.90	C <sub>25</sub> H <sub>33</sub> <sup>2</sup> H <sub>10</sub> O <sub>4</sub> N <sub>7</sub>
			3.11	C <sub>25</sub> H <sub>29</sub> <sup>2</sup> H <sub>12</sub> O <sub>4</sub> N <sub>7</sub>

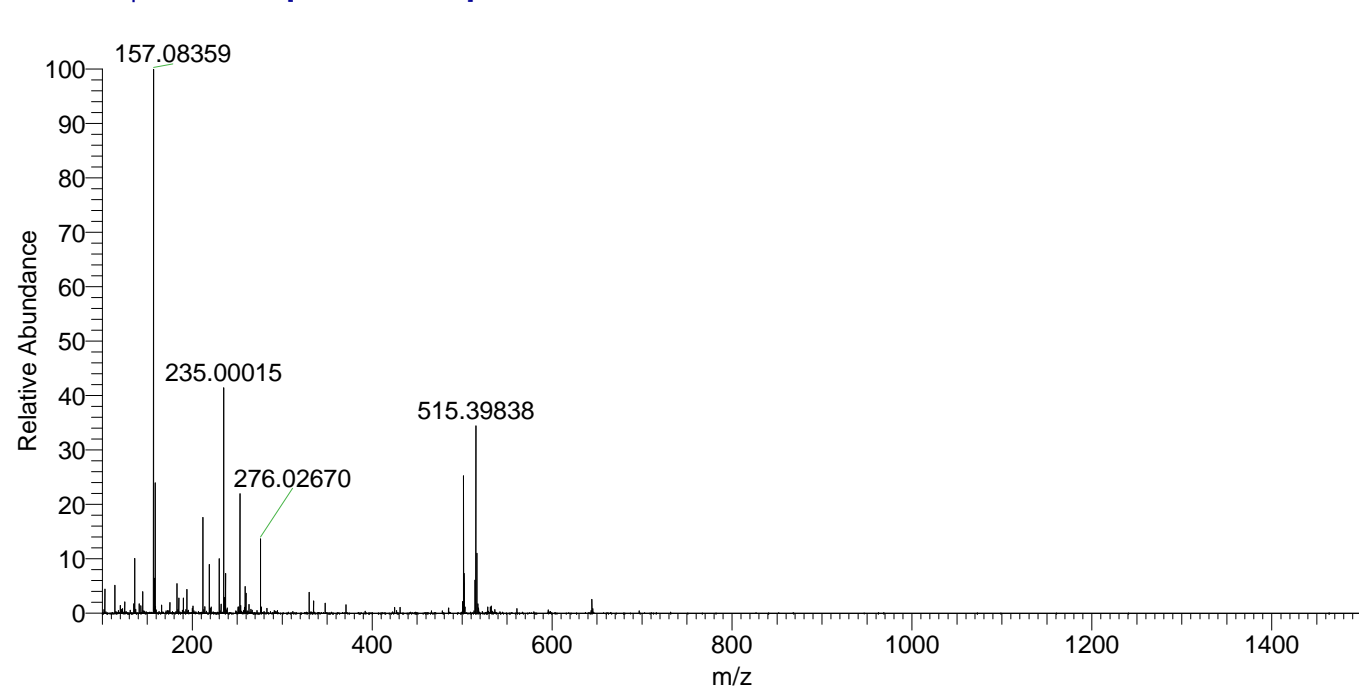


NL: 2.33E7  
 Base Peak m/z=  
 515.39629-515.40145 F:  
 FTMS + p ESI Full ms  
 [100.00-1500.00] MS  
 Lcornutus\_HDX



NL: 4.72E6  
 Base Peak m/z=  
 258.70520-258.70778 F:  
 FTMS + p ESI Full ms  
 [100.00-1500.00] MS  
 Lcornutus\_HDX

Lcornutus\_HDX #722 RT: 4.61 AV: 1 NL: 1.98E7  
 T: FTMS + p ESI Full ms [100.00-1500.00]



Lcornutus\_HDX #722 RT: 4.61 AV: 1 NL: 6.83E6  
 T: FTMS + p ESI Full ms [100.00-1500.00]

