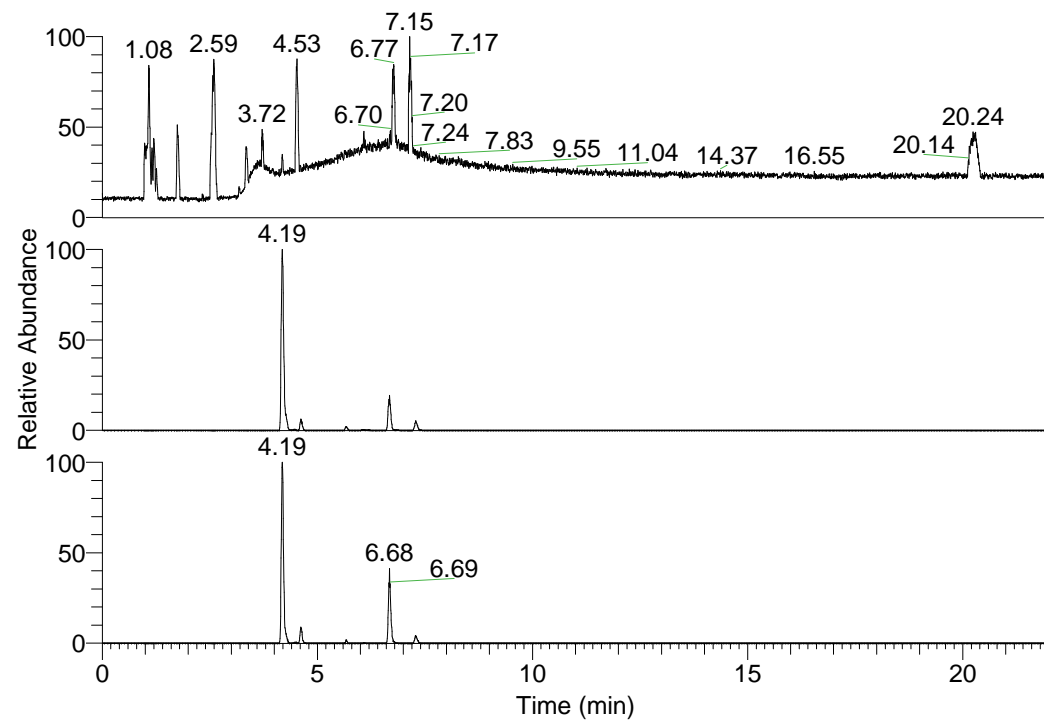


RT: 0.00 - 22.01



NL: 6.93E7  
Base Peak m/z=  
100.00000-1500.00000 F:  
FTMS + p ESI Full ms  
[100.00-1500.00] MS  
Lcornutus\_HDX

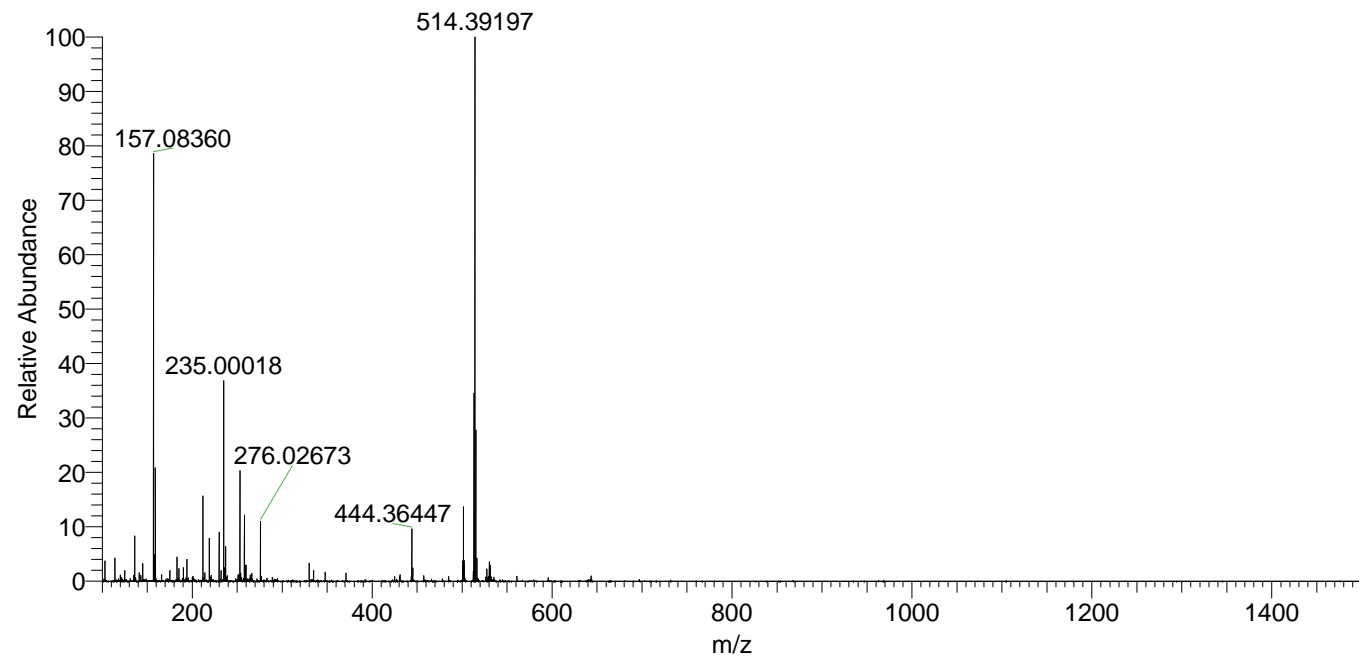
Lcornutus\_HDX#654 RT: 4.19  
T: FTMS + p ESI Full ms [100.00-1500.00]  
m/z= 514.00000-515.00000

m/z	Intensity	Relative	Delta (ppm)	Composition
514.39197	22358040.0	100.00	-0.15	C <sub>25</sub> H <sub>32</sub> <sup>2</sup> H <sub>10</sub> O <sub>4</sub> N <sub>7</sub>
			2.86	C <sub>25</sub> H <sub>30</sub> <sup>2</sup> H <sub>11</sub> O <sub>4</sub> N <sub>7</sub>
			-3.16	C <sub>25</sub> H <sub>34</sub> <sup>2</sup> H <sub>9</sub> O <sub>4</sub> N <sub>7</sub>

NL: 2.42E7  
Base Peak m/z=  
514.39003-514.39517 F:  
FTMS + p ESI Full ms  
[100.00-1500.00] MS  
Lcornutus\_HDX

NL: 2.75E6  
Base Peak m/z=  
258.20206-258.20464 F:  
FTMS + p ESI Full ms  
[100.00-1500.00] MS  
Lcornutus\_HDX

Lcornutus\_HDX #654 RT: 4.19 AV: 1 NL: 2.18E7  
T: FTMS + p ESI Full ms [100.00-1500.00]



Lcornutus\_HDX #654 RT: 4.19 AV: 1 NL: 2.18E7  
T: FTMS + p ESI Full ms [100.00-1500.00]

