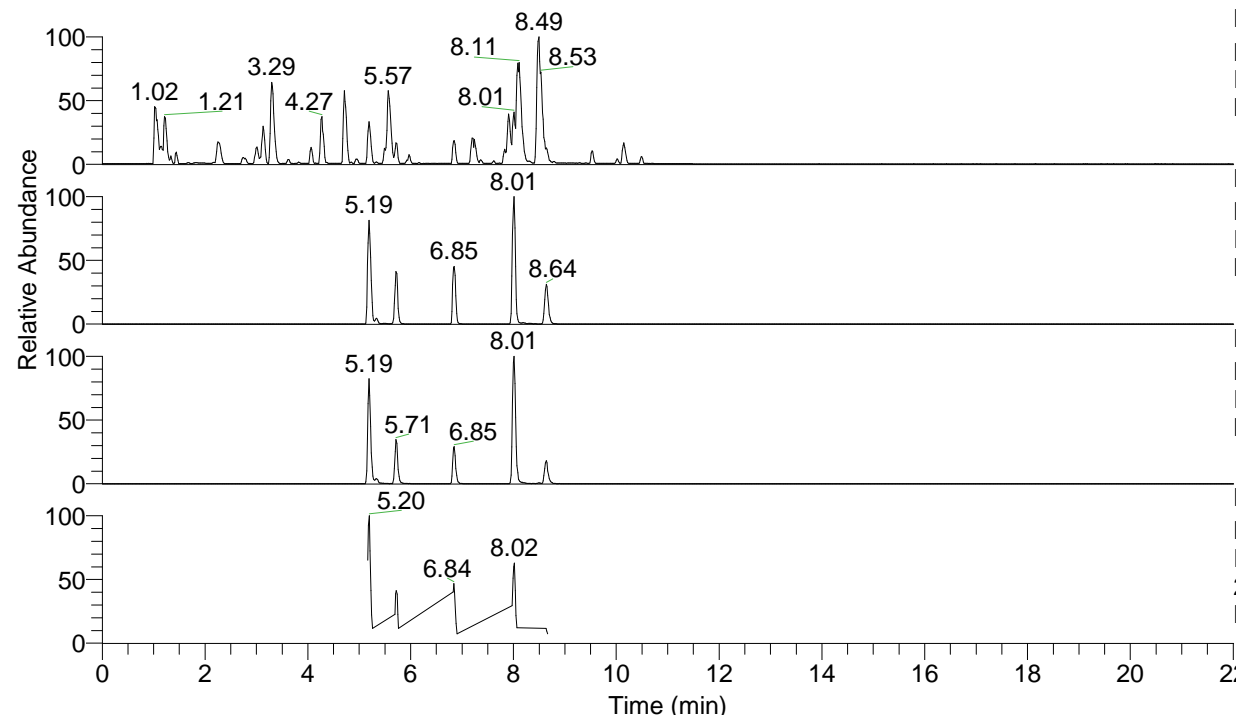


RT: 0.00 - 22.01



NL: 6.76E7
 Base Peak m/z= 100.00000-1500.00000 F:
 FTMS + p ESI Full ms [100.00-1500.00]
 MS Lcornutus

NL: 2.78E7
 Base Peak m/z= 504.32731-504.33235 F:
 FTMS + p ESI Full ms [100.00-1500.00]
 MS Lcornutus

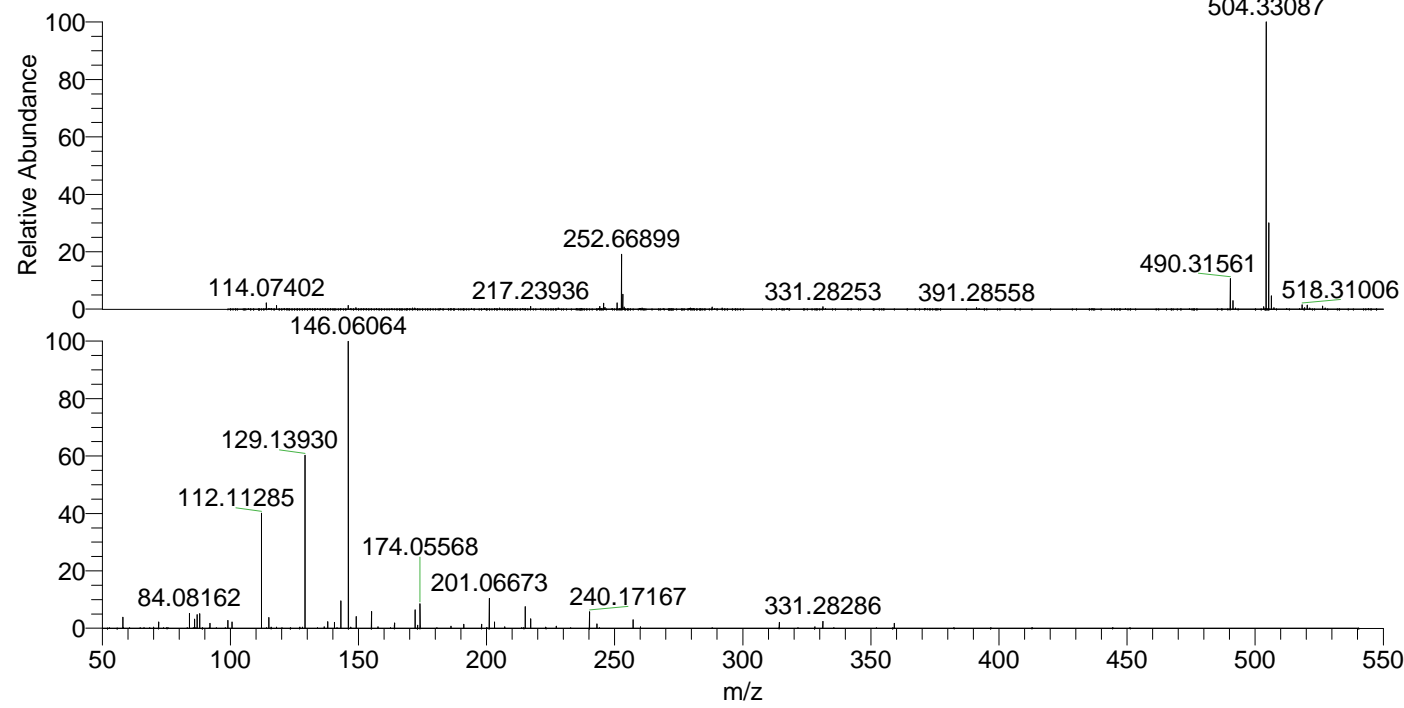
NL: 5.32E6
 Base Peak m/z= 252.66757-252.67009 F:
 FTMS + p ESI Full ms [100.00-1500.00]
 MS Lcornutus

NL: 9.29E5
 Base Peak m/z= 50.00000-1500.00000 F:
 FTMS + p ESI d Full ms2
 252.67@hcd35.00 [50.00-535.00] MS
 Lcornutus

Lcornutus#2067-2079 RT: 5.18-5.21 AV:

F: FTMS + p ESI d Full ms2 252.67 ...
 m/z= 50.00000-1000.00000

m/z	Intensity	Relative
58.06622	30263.4	3.92
72.08174	17012.9	2.20
84.08162	40641.5	5.26
86.09740	24860.2	3.22
87.05617	37458.8	4.85
88.04023	39456.9	5.11
92.09734	13899.8	1.80
99.09241	21115.3	2.74
100.61052	16909.4	2.19
112.11285	309833.8	40.13
115.05099	29199.7	3.78
129.13930	467328.5	60.54
136.62658	4248.0	0.55
138.05557	17892.0	2.32
140.60509	16006.0	2.07
143.15482	75882.2	9.83
146.06064	771987.1	100.00
149.11863	31626.4	4.10
155.08211	45060.6	5.84
164.07128	13850.5	1.79
172.10860	49207.9	6.37
173.07137	8755.2	1.13
174.05568	67525.5	8.75
186.12456	5763.7	0.75
191.08224	10686.5	1.38
198.05588	10728.4	1.39
201.06673	80843.8	10.47
203.15133	16732.6	2.17
215.08244	57804.7	7.49
217.23947	26592.6	3.44
227.22387	5446.6	0.71
240.17167	45053.1	5.84
243.07721	11465.2	1.49
257.19775	23766.9	3.08
260.10338	3907.0	0.51
314.25655	16210.8	2.10
331.28286	19085.1	2.47
359.17240	13417.9	1.74



NL: 2.19E7
 Lcornutus#2071 RT: 5.19
 AV: 1 T: FTMS + p ESI
 Full ms [100.00-1500.00]

NL: 7.72E5
 Lcornutus#2065-2081 RT:
 5.18-5.21 AV: 3 F: FTMS
 + p ESI d Full ms2
 252.67@hcd35.00
 [50.00-535.00]