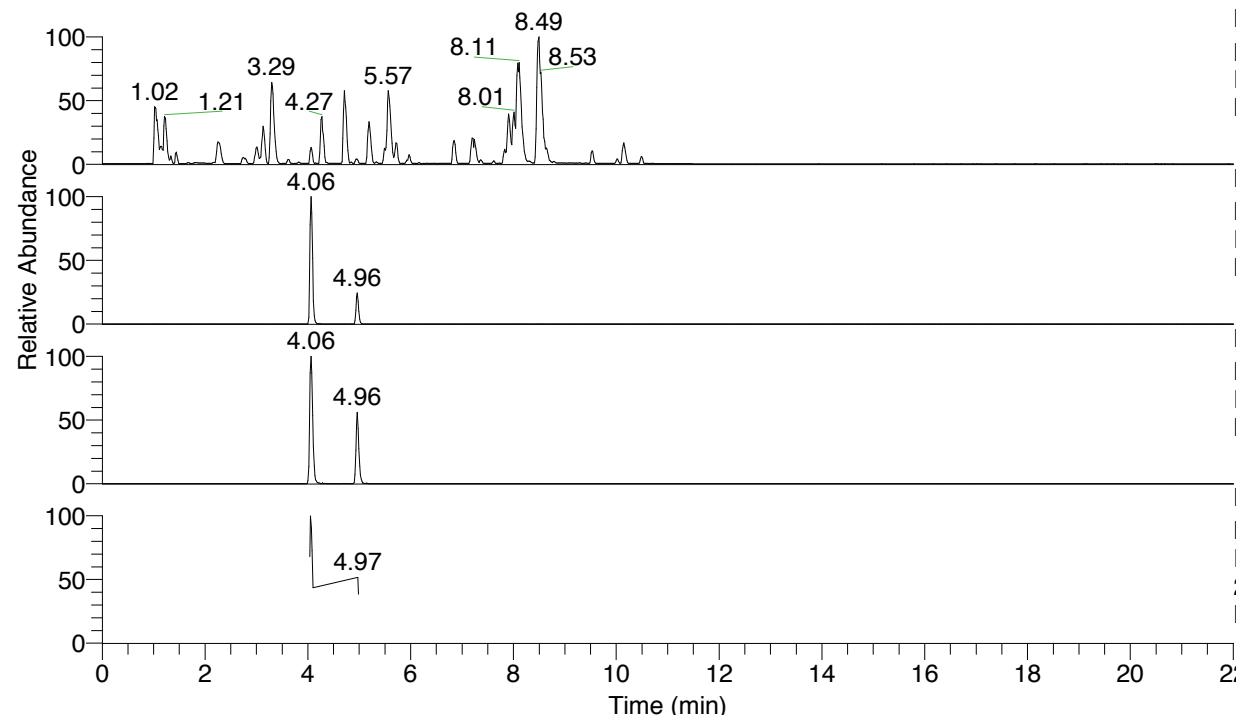


RT: 0.00 - 22.01



NL: 6.76E7
 Base Peak m/z= 100.00000-1500.00000 F:
 FTMS + p ESI Full ms [100.00-1500.00]
 MS Lcornutus

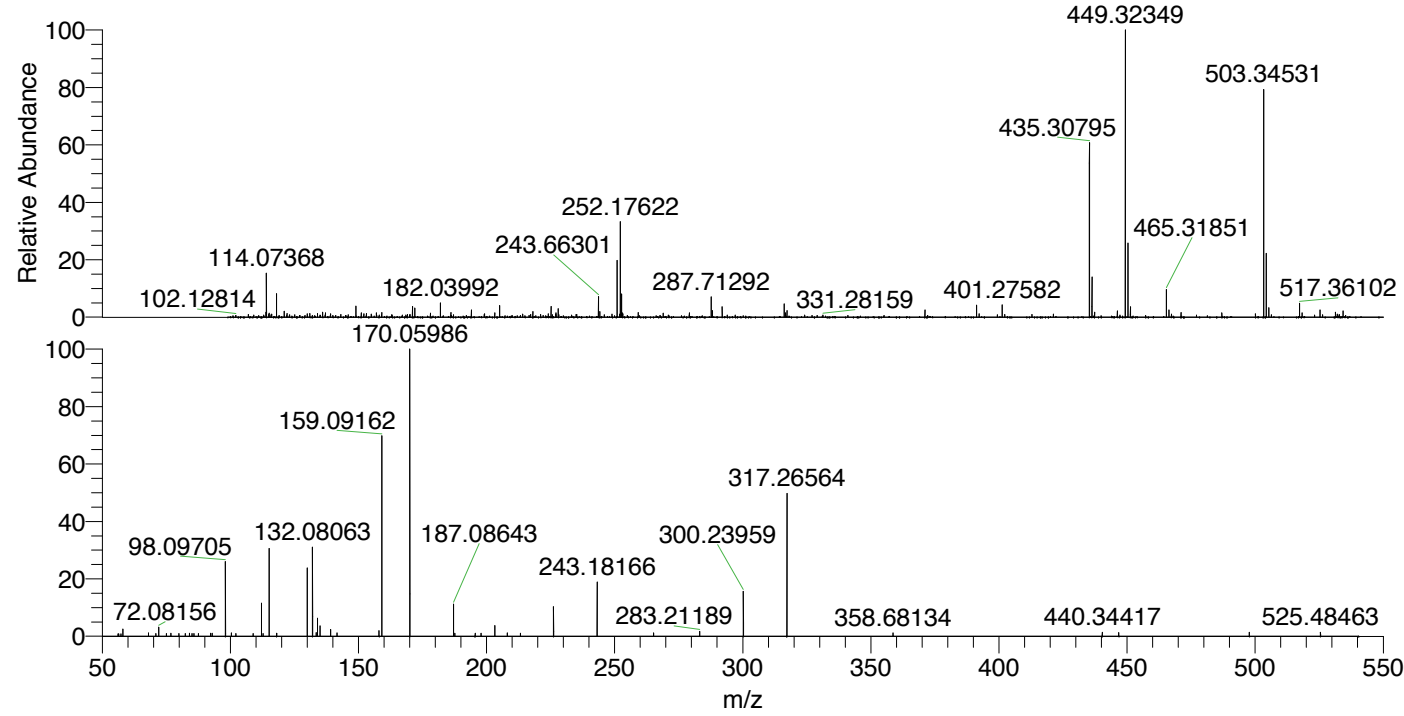
NL: 9.06E6
 Base Peak m/z= 503.34329-503.34833 F:
 FTMS + p ESI Full ms [100.00-1500.00]
 MS Lcornutus

NL: 1.61E6
 Base Peak m/z= 252.17556-252.17808 F:
 FTMS + p ESI Full ms [100.00-1500.00]
 MS Lcornutus

NL: 2.00E5
 Base Peak m/z= 50.00000-1500.00000 F:
 FTMS + p ESI d Full ms2
 252.18@hcd35.00 [50.00-535.00] MS
 Lcornutus

Lcornutus#1979-1991 RT: 4.96-4.99 AV:
 F: FTMS + p ESI d Full ms2 252.18 ...
 m/z= 50.00000-1000.00000

m/z	Intensity	Relative
56.16938	764.4	0.83
57.30906	782.3	0.85
58.06591	2296.7	2.50
58.11149	840.4	0.92
68.04890	1034.6	1.13
70.92649	905.0	0.99
72.08156	2872.1	3.13
75.10602	889.9	0.97
76.79770	938.9	1.02
79.97392	913.0	1.00
82.37175	888.9	0.97
84.08083	1006.7	1.10
85.06163	913.6	1.00
85.79368	849.7	0.93
87.51706	843.9	0.92
92.29350	932.1	1.02
92.97219	996.5	1.09
98.09705	23958.2	26.11
98.10234	914.7	1.00
100.37490	1033.7	1.13
102.13952	885.7	0.97
108.85275	865.5	0.94
112.11238	10601.7	11.56
112.75555	893.4	0.97
115.12320	28367.9	30.92
118.09045	993.4	1.08
130.06521	22389.2	24.40
132.08063	28656.7	31.23
133.50870	1184.9	1.29
133.97005	5875.7	6.40
134.97217	3294.5	3.59
139.12323	2198.2	2.40
141.64106	1110.7	1.21
158.06049	1845.6	2.01
159.09162	64131.3	69.90
170.05986	91745.6	100.00
187.08643	10268.6	11.19
187.60338	1007.8	1.10
195.56518	969.0	1.06
197.86623	966.7	1.05
203.22352	3388.8	3.69
208.10620	1066.7	1.16
213.20436	1009.8	1.10
226.15497	9444.9	10.29
243.18166	17226.7	18.78
265.20520	1077.6	1.17
283.21189	1555.0	1.69
300.23959	14824.9	16.16
317.26564	45838.7	49.96
317.30179	971.4	1.06
358.68134	1107.6	1.21
440.34417	1273.1	1.39
446.76805	1159.9	1.26
497.73834	1265.4	1.38
525.48463	1279.0	1.39



NL: 2.70E6
 Lcornutus#1981 RT: 4.96
 AV: 1 T: FTMS + p ESI
 Full lock ms
 [100.00-1500.00]

NL: 9.13E4
 Lcornutus#1976-1996 RT:
 4.96-4.99 AV: 3 F: FTMS
 + p ESI d Full ms2
 252.18@hcd35.00
 [50.00-535.00]

Lcornutus#1979-1991 RT: 4.96-4.99 AV: 3

F: FTMS + p ESI d Full ms2 252.18@hcd35.00 [50.00-535.00]

m/z= 50.00000-1000.00000

m/z	Intensity	Relative
56.16938	764.4	0.83
56.47686	716.9	0.78
57.30906	782.3	0.85
58.06591	2296.7	2.50
58.11149	840.4	0.92
68.04890	1034.6	1.13
70.92649	905.0	0.99
72.08156	2872.1	3.13
75.10602	889.9	0.97
76.79770	938.9	1.02
79.97392	913.0	1.00
82.37175	888.9	0.97
84.08083	1006.7	1.10
85.06163	913.6	1.00
85.79368	849.7	0.93
87.51706	843.9	0.92
92.29350	932.1	1.02
92.97219	996.5	1.09
98.09705	23958.2	26.11
98.10234	914.7	1.00
100.37490	1033.7	1.13
102.13952	885.7	0.97
108.85275	865.5	0.94
112.11238	10601.7	11.56
112.75555	893.4	0.97
115.12320	28367.9	30.92
118.09045	993.4	1.08
130.06521	22389.2	24.40
132.08063	28656.7	31.23
133.50870	1184.9	1.29
133.97005	5875.7	6.40
134.97217	3294.5	3.59
139.12323	2198.2	2.40
141.64106	1110.7	1.21
158.06049	1845.6	2.01
159.09162	64131.3	69.90
170.05986	91745.6	100.00
187.08643	10268.6	11.19
187.60338	1007.8	1.10

Lcornutus#1979-1991 RT: 4.96-4.99 AV: 3

F: FTMS + p ESI d Full ms2 252.18@hcd35.00 [50.00-535.00]

m/z= 50.00000-1000.00000

m/z	Intensity	Relative
195.56518	969.0	1.06
197.86623	966.7	1.05
203.22352	3388.8	3.69
208.10620	1066.7	1.16
213.20436	1009.8	1.10
226.15497	9444.9	10.29
243.18166	17226.7	18.78
265.20520	1077.6	1.17
283.21189	1555.0	1.69
300.23959	14824.9	16.16
317.26564	45838.7	49.96
317.30179	971.4	1.06
358.68134	1107.6	1.21
440.34417	1273.1	1.39
446.76805	1159.9	1.26
497.73834	1265.4	1.38
525.48463	1279.0	1.39