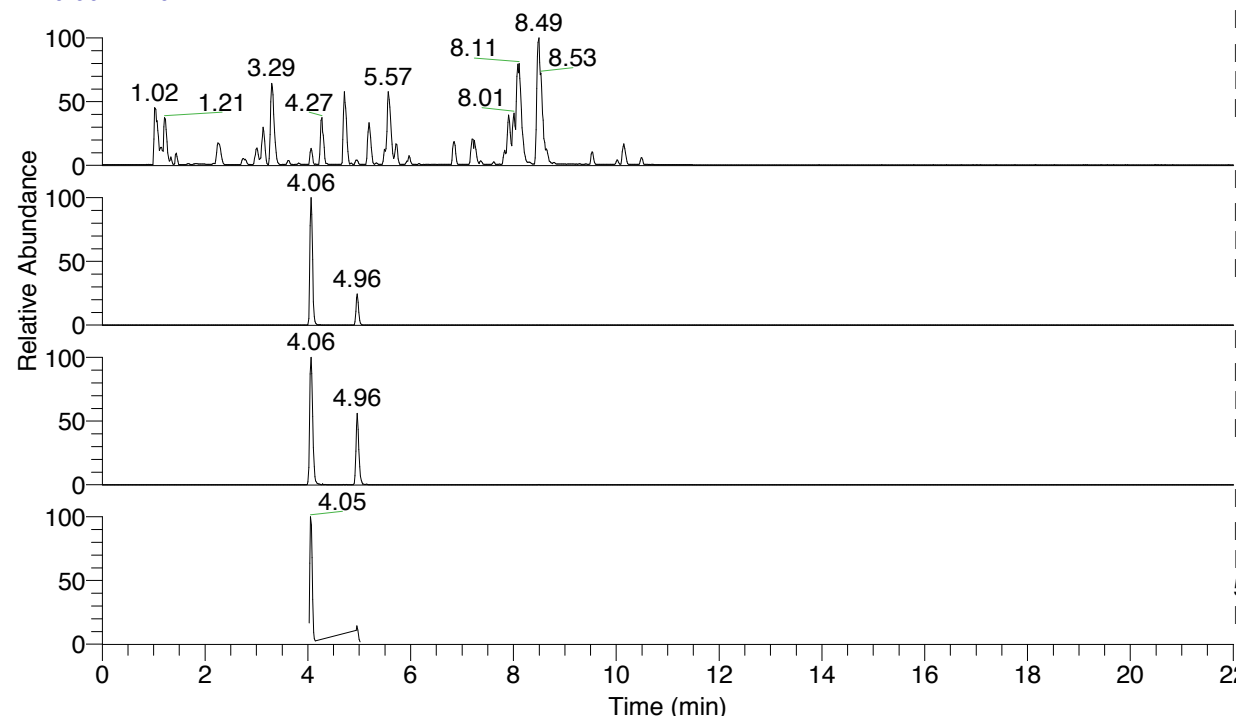


RT: 0.00 - 22.01



NL: 6.76E7  
 Base Peak m/z= 100.00000-1500.00000 F:  
 FTMS + p ESI Full ms [100.00-1500.00]  
 MS Lcornutus

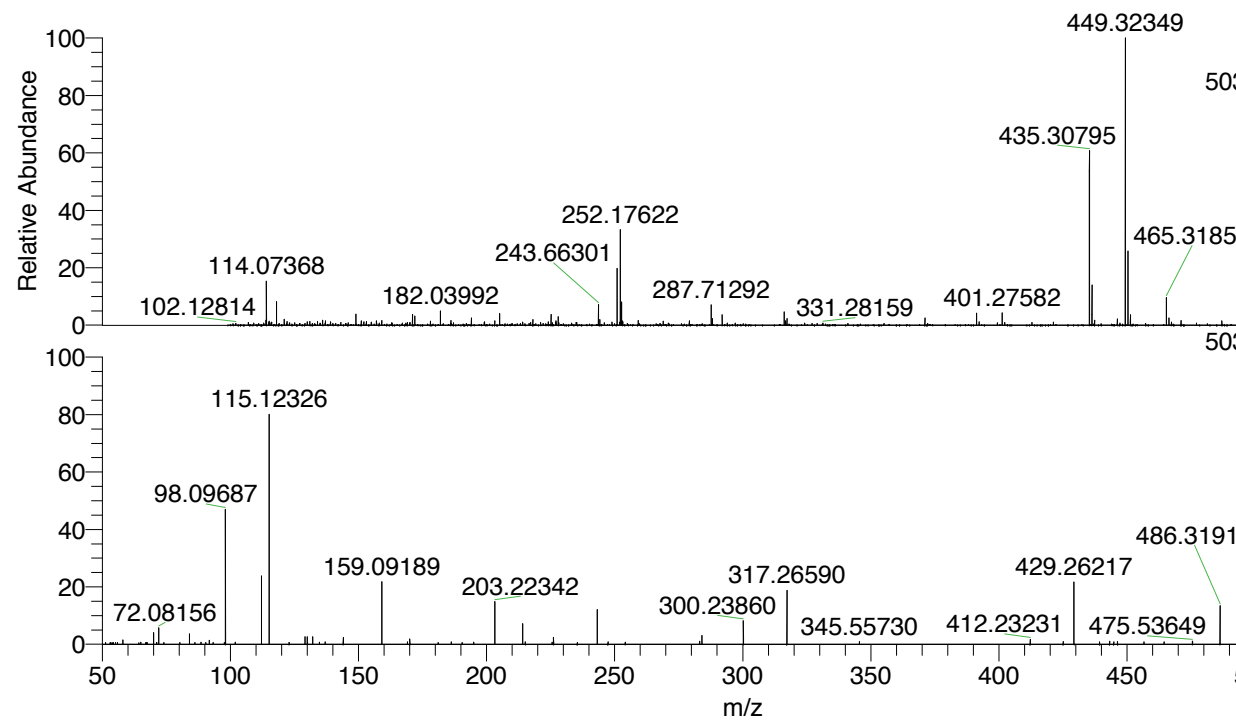
NL: 9.06E6  
 Base Peak m/z= 503.34329-503.34833 F:  
 FTMS + p ESI Full ms [100.00-1500.00]  
 MS Lcornutus

NL: 1.61E6  
 Base Peak m/z= 252.17556-252.17808 F:  
 FTMS + p ESI Full ms [100.00-1500.00]  
 MS Lcornutus

NL: 1.43E6  
 Base Peak m/z= 50.00000-1500.00000 F:  
 FTMS + p ESI d Full ms2  
 503.34@hcd35.00 [50.00-530.00] MS  
 Lcornutus

Lcornutus#1973-1989 RT: 4.94-4.98 AV:  
 F: FTMS + p ESI d Full ms2 503.34 ...  
 m/z= 50.00000-1000.00000

m/z	Intensity	Relative
51.31104	1019.0	0.66
58.06588	2388.8	1.54
65.00369	1123.9	0.72
70.06594	6332.9	4.08
72.08156	8891.9	5.73
84.08149	5672.4	3.65
88.57620	1044.3	0.67
91.75853	2260.1	1.46
97.64328	1038.1	0.67
98.09687	74347.3	47.89
101.91142	1166.6	0.75
112.11243	36890.9	23.76
115.12326	124447.9	80.17
129.13879	4146.7	2.67
130.06518	4071.1	2.62
130.18222	1206.1	0.78
132.14979	4078.3	2.63
134.73807	1093.8	0.70
137.04062	1342.1	0.86
144.08091	3668.1	2.36
159.09189	33460.5	21.55
169.09722	1318.2	0.85
170.06016	2821.3	1.82
181.10087	1029.9	0.66
186.19716	1279.3	0.82
190.50025	1037.1	0.67
194.97285	1071.1	0.69
203.22342	22855.1	14.72
214.09839	11119.8	7.16
215.15192	1359.8	0.88
225.56575	1126.1	0.73
226.15550	3821.4	2.46
235.41598	1026.1	0.66
243.18244	18858.2	12.15
247.41859	1256.1	0.81
254.14928	1111.6	0.72
283.21301	1681.9	1.08
284.10372	4637.3	2.99
300.23860	12992.4	8.37
317.26590	29480.8	18.99
345.55730	1402.7	0.90
412.23231	2605.1	1.68
425.08612	1385.6	0.89
429.26217	34151.8	22.00
439.27810	1358.9	0.88
443.20754	1568.0	1.01
444.83984	1339.3	0.86
446.28520	1413.2	0.91
456.61042	1322.0	0.85
464.46874	1236.8	0.80
475.53649	1685.4	1.09
486.31918	20621.8	13.28
503.34509	155237.0	100.00
505.35950	1403.0	0.90
518.80922	1304.7	0.84



NL: 2.70E6  
 Lcornutus#1981 RT: 4.96  
 AV: 1 T: FTMS + p ESI  
 Full lock ms  
 [100.00-1500.00]

NL: 1.54E5  
 Lcornutus#1973-1992 RT:  
 4.94-4.98 AV: 4 F: FTMS  
 + p ESI d Full ms2  
 503.34@hcd35.00  
 [50.00-530.00]

Lcornutus#1973-1989 RT: 4.94-4.98 AV: 4

F: FTMS + p ESI d Full ms2 503.34@hcd35.00 [50.00-530.00]

m/z= 50.00000-1000.00000

m/z	Intensity	Relative
51.31104	1019.0	0.66
53.27717	998.3	0.64
54.21287	790.3	0.51
54.33716	995.3	0.64
55.23176	888.0	0.57
55.90635	985.9	0.64
58.06588	2388.8	1.54
64.30389	811.5	0.52
65.00369	1123.9	0.72
65.10631	929.4	0.60
67.01501	911.1	0.59
67.17538	941.8	0.61
67.59576	889.6	0.57
70.06594	6332.9	4.08
71.16789	912.5	0.59
71.27450	902.4	0.58
72.08156	8891.9	5.73
74.04721	937.0	0.60
80.30122	986.3	0.64
84.08149	5672.4	3.65
86.14786	942.1	0.61
88.57620	1044.3	0.67
90.40783	946.8	0.61
91.75853	2260.1	1.46
93.24289	985.7	0.63
97.64328	1038.1	0.67
98.09687	74347.3	47.89
101.91142	1166.6	0.75
112.11243	36890.9	23.76
115.12326	124447.9	80.17
122.96264	1008.0	0.65
129.13879	4146.7	2.67
130.06518	4071.1	2.62
130.18222	1206.1	0.78
132.14979	4078.3	2.63
134.73807	1093.8	0.70
137.04062	1342.1	0.86
144.08091	3668.1	2.36
159.09189	33460.5	21.55

Lcornutus#1973-1989 RT: 4.94-4.98 AV: 4

F: FTMS + p ESI d Full ms2 503.34@hcd35.00 [50.00-530.00]

m/z= 50.00000-1000.00000

m/z	Intensity	Relative
169.09722	1318.2	0.85
170.06016	2821.3	1.82
181.10087	1029.9	0.66
186.19716	1279.3	0.82
190.50025	1037.1	0.67
194.97285	1071.1	0.69
203.22342	22855.1	14.72
214.09839	11119.8	7.16
215.15192	1359.8	0.88
225.56575	1126.1	0.73
226.15550	3821.4	2.46
235.41598	1026.1	0.66
243.18244	18858.2	12.15
247.41859	1256.1	0.81
254.14928	1111.6	0.72
283.21301	1681.9	1.08
284.10372	4637.3	2.99
300.23860	12992.4	8.37
317.26590	29480.8	18.99
345.55730	1402.7	0.90
412.23231	2605.1	1.68
425.08612	1385.6	0.89
429.26217	34151.8	22.00
439.27810	1358.9	0.88
443.20754	1568.0	1.01
444.83984	1339.3	0.86
446.28520	1413.2	0.91
456.61042	1322.0	0.85
464.46874	1236.8	0.80
475.53649	1685.4	1.09
486.31918	20621.8	13.28
503.34509	155237.0	100.00
505.35950	1403.0	0.90
518.80922	1304.7	0.84