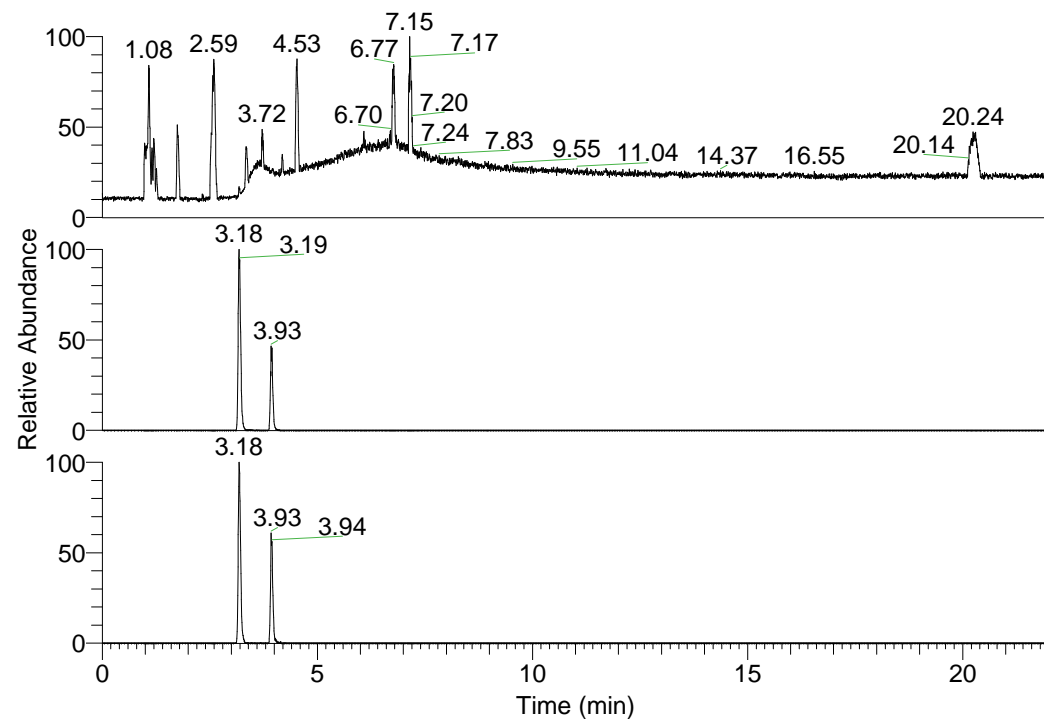


RT: 0.00 - 22.01



NL: 6.93E7
 Base Peak m/z=
 100.00000-1500.00000 F:
 FTMS + p ESI Full ms
 [100.00-1500.00] MS
 Lcornutus_HDX

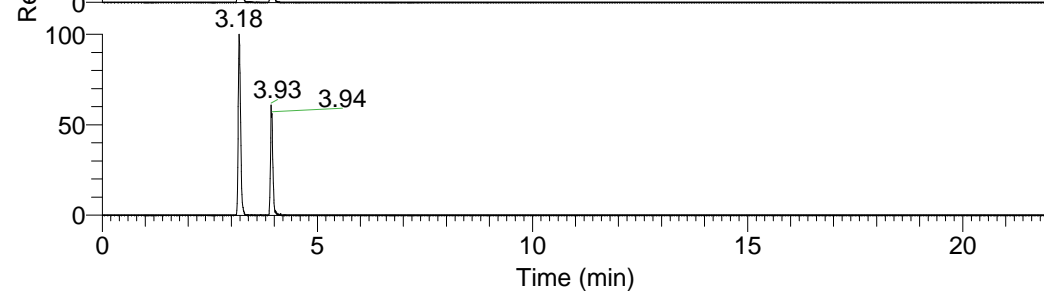
Lcornutus_HDX#490 RT: 3.18
 T: FTMS + p ESI Full ms [100.00-1500.00]

m/z= 515.00000-516.00000

| m/z | Intensity | Relative | Delta (ppm) | Composition |
|-----------|------------|----------|-------------|--|
| 515.42059 | 11815404.0 | 100.00 | 0.02 | C ₂₅ H ₃₁ ² H ₁₂ O ₃ N ₈ |
| | | | -2.99 | C ₂₅ H ₃₃ ² H ₁₁ O ₃ N ₈ |
| | | | 3.02 | C ₂₅ H ₂₉ ² H ₁₃ O ₃ N ₈ |

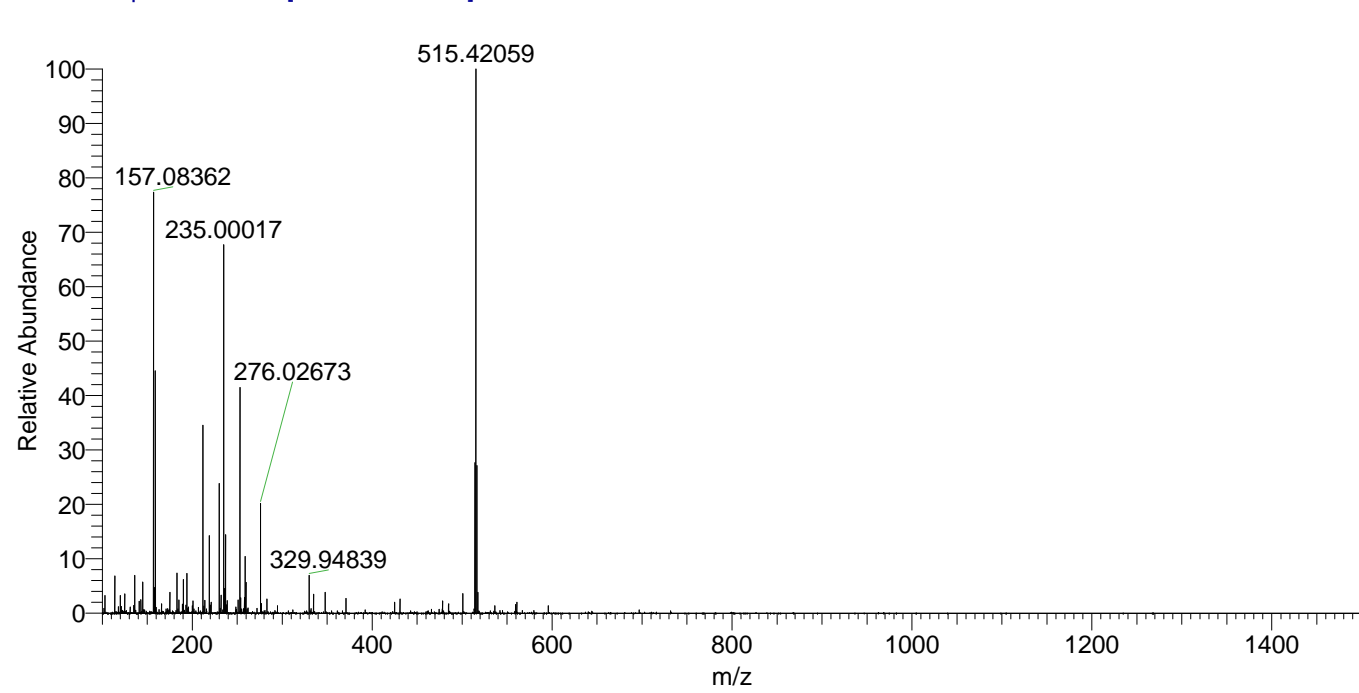


NL: 1.18E7
 Base Peak m/z=
 515.41856-515.42372 F:
 FTMS + p ESI Full ms
 [100.00-1500.00] MS
 Lcornutus_HDX



NL: 1.16E6
 Base Peak m/z=
 258.71633-258.71891 F:
 FTMS + p ESI Full ms
 [100.00-1500.00] MS
 Lcornutus_HDX

Lcornutus_HDX #490 RT: 3.18 AV: 1 NL: 1.11E7
 T: FTMS + p ESI Full ms [100.00-1500.00]



Lcornutus_HDX #490 RT: 3.18 AV: 1 NL: 1.11E7
 T: FTMS + p ESI Full ms [100.00-1500.00]

