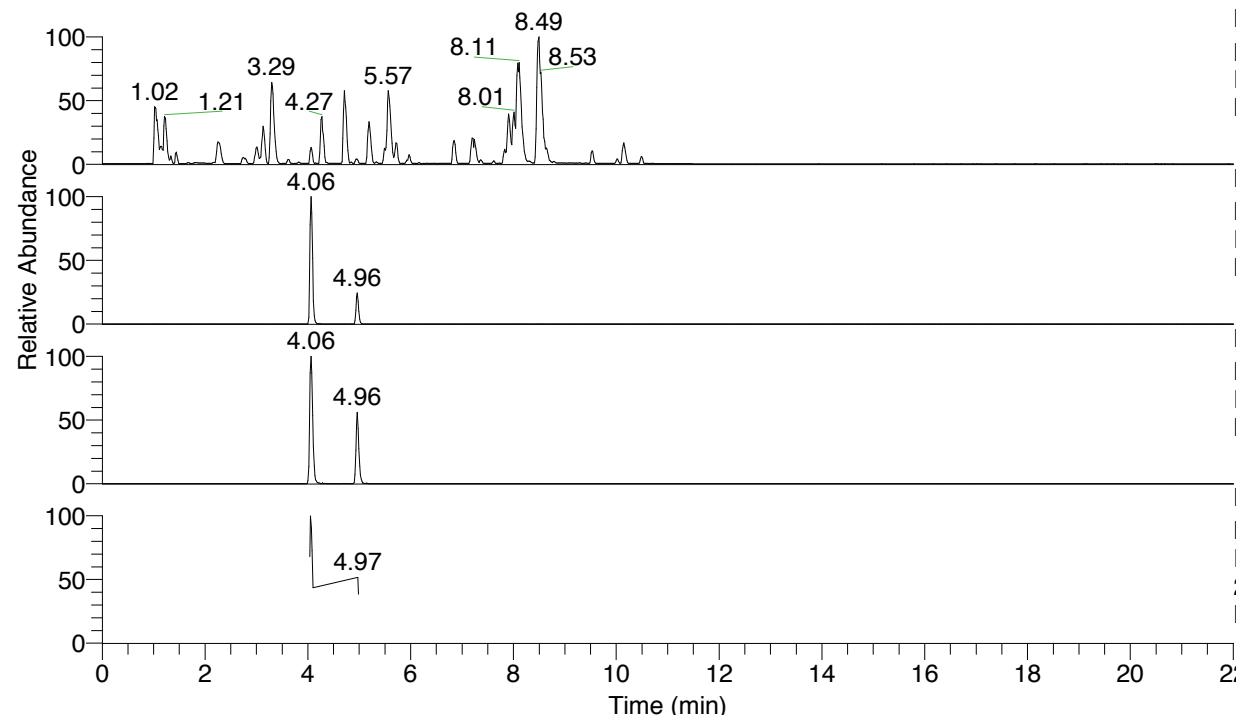


RT: 0.00 - 22.01



NL: 6.76E7
 Base Peak m/z= 100.00000-1500.00000 F:
 FTMS + p ESI Full ms [100.00-1500.00]
 MS Lcornutus

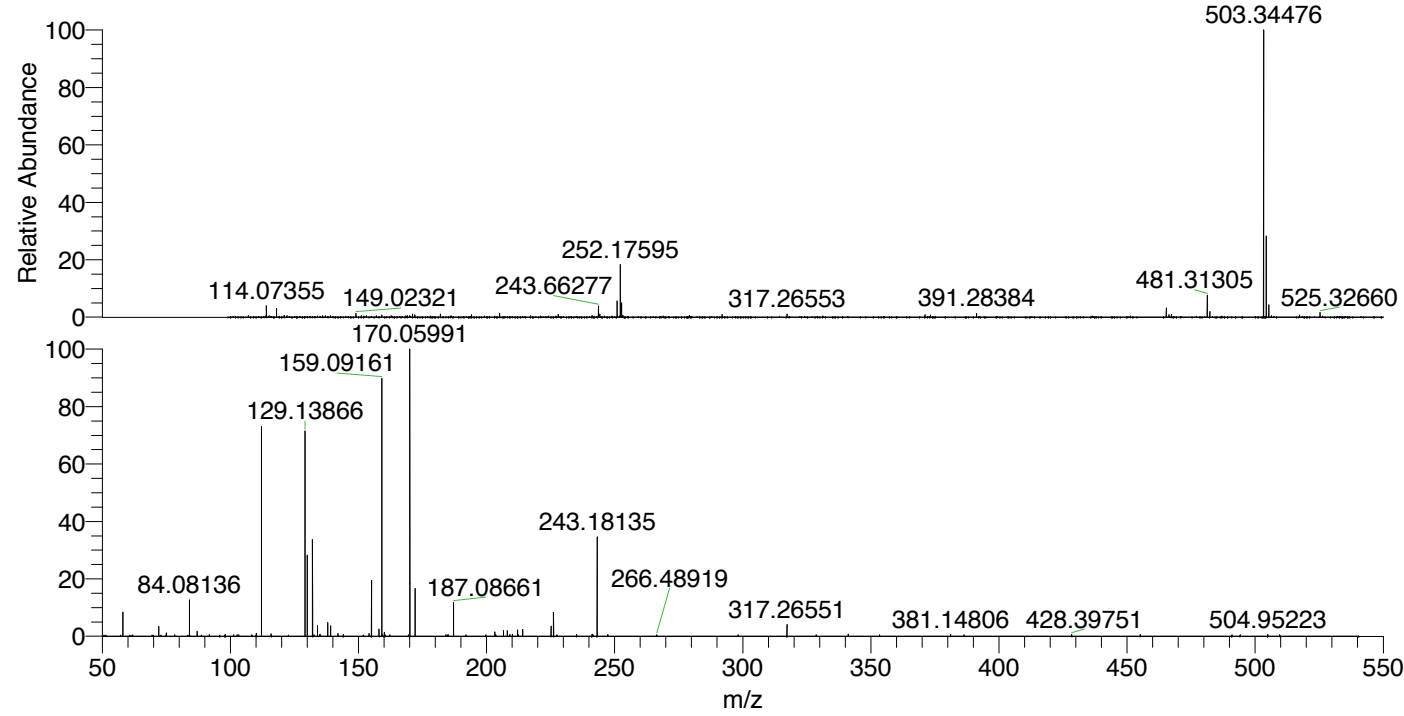
NL: 9.06E6
 Base Peak m/z= 503.34329-503.34833 F:
 FTMS + p ESI Full ms [100.00-1500.00]
 MS Lcornutus

NL: 1.61E6
 Base Peak m/z= 252.17556-252.17808 F:
 FTMS + p ESI Full ms [100.00-1500.00]
 MS Lcornutus

NL: 2.00E5
 Base Peak m/z= 50.00000-1500.00000 F:
 FTMS + p ESI d Full ms2
 252.18@hcd35.00 [50.00-535.00] MS
 Lcornutus

Lcornutus#1612-1629 RT: 4.04-4.08 AV:
 F: FTMS + p ESI d Full ms2 252.18 ...
 m/z= 50.00000-1000.00000

m/z	Intensity	Relative
58.06588	13274.9	8.46
72.08140	5506.2	3.51
75.09245	1842.9	1.17
84.08136	20091.5	12.80
87.05570	2705.6	1.72
91.75198	888.2	0.57
98.09706	884.1	0.56
110.09658	1732.1	1.10
112.11242	114954.2	73.23
115.95947	1345.3	0.86
129.13866	116772.6	74.39
130.06507	45483.1	28.98
132.08064	53700.8	34.21
133.96983	6013.3	3.83
134.97085	1132.1	0.72
138.05487	7527.4	4.80
139.12298	5930.7	3.78
142.06508	1479.0	0.94
144.08163	1030.9	0.66
154.09754	1426.2	0.91
155.08138	31319.2	19.95
158.06029	4131.0	2.63
159.09161	141056.6	89.86
160.07576	2218.0	1.41
160.37584	838.2	0.53
170.05991	156972.8	100.00
172.10779	26717.8	17.02
184.10843	833.3	0.53
187.08661	18500.2	11.79
199.77810	843.9	0.54
203.22389	2420.7	1.54
203.61685	861.8	0.55
206.62112	3063.0	1.95
208.14463	3133.9	2.00
209.12830	978.8	0.62
210.08745	1067.1	0.68
212.10341	3406.8	2.17
214.09750	3892.9	2.48
225.17096	5557.9	3.54
226.15498	13125.8	8.36
227.51329	847.5	0.54
235.15043	924.8	0.59
241.16735	1099.0	0.70
241.58147	827.1	0.53
243.18135	54403.9	34.66
247.33970	904.8	0.58
298.18704	842.4	0.54
317.26551	6408.5	4.08
328.65658	835.3	0.53
341.16295	1117.8	0.71
381.14806	1002.7	0.64
428.39751	882.1	0.56
455.17133	857.7	0.55
490.95064	824.9	0.53
504.95223	976.1	0.62



NL: 8.73E6
 Lcornutus#1621 RT: 4.06
 AV: 1 T: FTMS + p ESI
 Full lock ms
 [100.00-1500.00]

NL: 1.57E5
 Lcornutus#1612-1629 RT:
 4.04-4.08 AV: 4 F: FTMS
 + p ESI d Full ms2
 252.18@hcd35.00
 [50.00-535.00]

Lcornutus#1612-1629 RT: 4.04-4.08 AV: 4

F: FTMS + p ESI d Full ms2 252.18@hcd35.00 [50.00-535.00]

m/z= 50.00000-1000.00000

m/z	Intensity	Relative
58.06588	13274.9	8.46
72.08140	5506.2	3.51
75.09245	1842.9	1.17
84.08136	20091.5	12.80
87.05570	2705.6	1.72
91.75198	888.2	0.57
98.09706	884.1	0.56
103.29667	791.3	0.50
108.42591	818.4	0.52
110.09658	1732.1	1.10
112.11242	114954.2	73.23
115.95947	1345.3	0.86
129.13866	116772.6	74.39
130.06507	45483.1	28.98
132.08064	53700.8	34.21
133.96983	6013.3	3.83
134.97085	1132.1	0.72
138.05487	7527.4	4.80
139.12298	5930.7	3.78
142.06508	1479.0	0.94
144.08163	1030.9	0.66
154.09754	1426.2	0.91
155.08138	31319.2	19.95
158.06029	4131.0	2.63
159.09161	141056.6	89.86
160.07576	2218.0	1.41
160.37584	838.2	0.53
169.52568	785.5	0.50
170.05991	156972.8	100.00
172.10779	26717.8	17.02
184.10843	833.3	0.53
185.07155	809.5	0.52
187.08661	18500.2	11.79
199.77810	843.9	0.54
203.22389	2420.7	1.54
203.61685	861.8	0.55
206.62112	3063.0	1.95
208.14463	3133.9	2.00
209.12830	978.8	0.62

Lcornutus#1612-1629 RT: 4.04-4.08 AV: 4

F: FTMS + p ESI d Full ms2 252.18@hcd35.00 [50.00-535.00]

m/z= 50.00000-1000.00000

m/z	Intensity	Relative
210.08745	1067.1	0.68
212.10341	3406.8	2.17
214.09750	3892.9	2.48
225.17096	5557.9	3.54
226.15498	13125.8	8.36
227.51329	847.5	0.54
235.15043	924.8	0.59
241.16735	1099.0	0.70
241.58147	827.1	0.53
243.18135	54403.9	34.66
247.33970	904.8	0.58
266.48919	794.5	0.51
298.18704	842.4	0.54
317.26551	6408.5	4.08
328.65658	835.3	0.53
341.16295	1117.8	0.71
353.40367	803.3	0.51
381.14806	1002.7	0.64
386.41581	808.8	0.52
428.39751	882.1	0.56
455.17133	857.7	0.55
490.95064	824.9	0.53
504.95223	976.1	0.62